



ТРИМЕСЕЧЕН ДОКЛАД ЗА ПЕРИОДА ОКТОМВРИ - ДЕКЕМВРИ 2023 ГОДИНА

РЕЗУЛТАТИ

ОТ СОБСТВЕНИТЕ НЕПРЕКЪСНАТИ ИЗМЕРВАНИЯ НА ШУМА,
ДАВАЩИ ПРЕДСТАВА ЗА АКУСТИЧНОТО СЪСТОЯНИЕ
НА РАЙОНИ, РАЗПОЛОЖЕНИ В БЛИЗОСТ ДО ЛЕТИЩЕ СОФИЯ

Настоящата информация е изготвена в съответствие с чл. 32, ал. 1 от Наредба № 54 от 13.12.2010 г. за дейността на националната система за мониторинг на шума в околната среда и за изискванията за провеждане на собствен мониторинг и предоставяне на информация от промишлените източници на шум в околната среда.

1. Собственик или ползвател, име и адрес на летището – източник на шум:

Ползвател:	„СОФ Кънект” АД
Пълен адрес	Област: София (столица), Община: Столична, район „Слатина“
на седалището	гр. София, п.к. 1540
на ползвателя:	бул. „Христофор Колумб“ № 1 Летище София
e-mail:	office@sof-connect.com
Представител:	Хесус Кабайеро Пинто, Изпълнителен директор

2. Лице за контакти – телефон, факс и др.:

Атанас Стоев, ръководител отдел „Околната среда и Интегрирана система за управление“ /ОС и ИСУ/

Тел. 02 937 2646, факс: 02 937 2010, e-mail: a.stoev@sof-connect.com

Нели Панчева, старши еколог

Тел. 02 937 2616, факс: 02 937 2010, e-mail: panchevan@sof-connect.com

3. Типове въздухоплавателни средства, опериращи на летище София

В Таблица 1 към настоящия доклад „Справка за броя на изпълнените самолетодвижения от/до летище София по редовни и сезонни чартърни линии за периода октомври - декември 2023 год.” са дадени типа и модификацията на въздухоплавателните средства (ВС), изпълняващи редовни полети по разписание и сезонни чартърни линии от/до летище София.

Таблица 1

Справка за броя на изпълнените самолетодвижения от/до летище София по редовни и сезонни чартърни линии за периода октомври - декември 2023 г.

Тип ВС	Модификация	Самолетодвижения /бр./			Общо за тримесечие
		Октомври	Ноември	Декември	
300	Airbus Industrie	0	2	8	10
319	Airbus Industrie A319	137	102	94	333
320	Airbus Industrie A320-100/200	1489	1164	1297	3950
321	Airbus Industrie A321	517	541	582	1640
32A	Airbus Industrie A320-sharkles	32	33	28	93
32N	Airbus Industrie A20N	95	57	69	221
32Q	Airbus Industrie A21N	271	94	191	556
733	Boeing 737-300 Pax	5	0	9	14
734	Boeing 737-400 Pax	17	13	17	47
737	Boeing 737-All pax models	2	10	8	20
738	Boeing 737-800 Pax	825	930	1105	2860
739	Boeing 737-900 Passenger	6	30	32	68
73Q	Boeing 737-400 Mixed Configuration	16	18	30	64
73S	Boeing 737-700 Freighter	2	0	0	2
73Y	Boeing 737-300 Freighter	5	0	0	5
744	Boeing 747-400 Pax	8	4	0	12
752	Boeing 757-200	44	42	30	116
762	Boeing 767-200 Pax	17	4	8	29
763	Boeing 767-300 Pax	64	24	20	108
772	Boeing 777-200 Pax	40	8	0	48
7M8	Boeing 737MAX-8 Passenger/BBJ MAX 8	452	198	256	906
AGH	Agusta A109	2	0	0	2
AN6	Antonov AN26	2	0	0	2
ANF	Antonov AN12	0	0	2	2
AR8	Avro RJ85	1	1	0	2
AT4	Aerospatiale/Alenia ATR 42-300	6	5	6	17
AT5	Aerospatiale/Alenia ATR 42-500	1	0	1	2

Тип ВС	Модификация	Самолетодвижения /бр./			Общо за тримесечие
		Октомври	Ноември	Декември	
AT7	Aerospatiale/Alenia ATR 72	224	240	201	665
BE4	Beech/Raytheon Beechjet 400	8	0	2	10
BET	Beechcraft twin turboprop engines	8	6	8	22
C27	Spartan Tactical Transport Aircraft C27	28	50	14	92
CCJ	Bombardier Global 7000	12	11	12	35
CCX	Bombardier BD-700 Global Express	8	4	10	22
CH4	Boeing CH-47 Chinook	2	0	0	2
CJ1	Cessna 500/521/525 Citation	10	13	9	32
CJ2	Cessna 550/551/552 Citation	6	13	11	30
CJ5	Cessna 560 Citation	0	0	10	10
CJ6	Cessna 650 Citation	8	6	0	14
CJ8	Cessna 680 Citation	11	6	8	25
CJL	Cessna Citation Excel	34	19	33	86
CL3	Bombardier Continental Challenger	6	0	4	10
CN1	Cessna 172	10	12	2	24
CNJ	Cessna Citation - all types	27	16	14	57
CR2	Canadair Regional Jet 200	2	2	2	6
DF2	Dassault Falcon 20/200/2000	46	8	5	59
DF7	Dassault Falcon Jet 7X	4	0	2	6
DF9	Dassault Falcon Jet 900	12	4	2	18
E70	Embraer ERJ-170	12	12	18	42
E75	Embraer 175	34	60	48	142
E90	Embraer ERJ-190	412	306	283	1001
E95	Embraer 195	40	8	20	68
EP3	Embraer EMB-505 Phenom 300	45	50	31	126
ER3	Embraer ERJ-135 and Legacy 600/650	2	4	8	14
GJ4	Gulfstream Aerospace G300/350/400/450	2	0	2	4
GR2	Gulfstream 200 (Galaxy) USA	6	4	11	21
GR3	Gulfstream Aerospace G-280	3	6	4	13
GRJ	Gulfstream G550	16	13	3	32
H25	Hawker 750/800/800XP/800SP	20	6	0	26
H60	Sikorsky Helicopters S-70/MH-60/AH-64	12	0	4	16
L4T	LET 410	19	30	10	59
LJ3	Learjet 35	4	0	2	6
LJ4	Learjet 45	2	4	0	6
LJ6	Learjet 60	12	16	9	37
LOH	Lockheed L-382 (L-100) Hercules	2	6	2	10
M82	McDonnell Douglas MD82	23	0	0	23
MIH	MI-8/Mi-17/Mi-171/Mi-172	2	0	8	10
P18	PIAGGIO AVANTI	34	13	19	66
PA1	P46T/P28R/P28A	12	0	4	16
PA2	PA46	12	4	0	16

Тип ВС	Модификация	Самолетодвижения /бр./			Общо за тримесечие
		Октомври	Ноември	Декември	
PL2	Pilatus PC12	10	7	15	32
S20	Saab 2000	2	0	0	2
TBM	Socata TBM700/850	0	2	2	4
Общо:		5 260	4 241	4 645	14 146
Други:		232	338	244	814
Тотал:		5 492	4 579	4 889	14 960

* Самолетодвиженията включват излитания и кацания на ВС на летище София.

4. Денонощни нива на шума, разпределени по дни от месеците

Системата за мониторинг на шума бе въведена в експлоатация в края на 2004 г., а в средата на 2015 г. бе осъвременена чрез цялостна подмяна на софтуерната платформа с най-актуалната в областта Noise Desk & ANOMS. От 01.01.2021 г. системата работи с изцяло обновен софтуер Noise Desk 2.

Системата се състои от осем стационарни и един мобилен терминал, чието разположение е съобразено с прогнозния шумов контур $L_{Aeq} 60 \text{ dB (A)}$ на летище София за 2007/2008 г. и трасетата за излитане и кацане на въздухоплавателни средства от и на летище София. През 2017 г. в допълнение към съществуващите шест стационарни терминала за мониторинг на шума бяха доставени и инсталирани два нови терминала, западно от летище София.

Системата работи на принципа на разпределеното управление, като всеки един от терминалите функционира самостоятелно, измерва шумовите нива чрез микрофон и предава информация към централен компютър-сървър за последваща обработка на данните.

Терминалите на системата са инсталирани в локации за мониторинг на шума, намиращи се под трасетата за излитане и кацане на летище София. Местоположенията им са както следва:

Терминал W1 – западен край на летище София на около 920 m западно от праг 09 на пистата за излитане и кацане (ПИК);

Терминал W2 – кв. В. Левски, ул. „Гр. Цамблак“ № 18, покрив на 106 ОУ „Гр. Цамблак“;

Терминал W3 – кв. Суха река, район „Подуяне“, ул. „Плакалница“ № 51, покрив на сградата на общината;

Терминал W4 – кв. Суха река, район „Подуяне“, ул. „Хан Севар“ № 1, покрив на 74 ДГ „Дъга“;

Терминал W5 – район „Оборище“, ул. „Искър“ № 62, сградата на Народно читалище „Академик Андрей Стоянов“;

Терминал W6 – район „Възраждане“, ул. „Брегалница“ № 48, сградата на 1 ДГ;

Терминал E1 – източен край на летище София на около 960 m източно от праг 27 на пистата за излитане и кацане;

Терминал Е2 – с. Кривина-1588, ул. „Просвета“ № 1, двора на 155 ОУ „Св. св. Кирил и Методий“;

Мобилен терминал Е3 – терминалът е предвиден за краткосрочни контролни измервания.

Регистрирането на шума в западно направление, което обхваща гъсто населена градска част, се осъществява посредством терминалите W1, W2, W3, W4, W5 и W6, а в източно направление от терминали Е1 и Е2.

АКУСТИЧНО СЪСТОЯНИЕ НА РАЙОНИ, РАЗПОЛОЖЕНИ В БЛИЗОСТ ДО ЛЕТИЩЕ СОФИЯ

Акустичното състояние за четвъртото тримесечие на 2023 г. за районите, където са инсталирани стационарните терминали за мониторинг на шума е представено в графичен и табличен вид.

В Приложения № № 1, 2 и 3 в табличен вид са представени денонощните еквивалентни нива на шума, дневните, вечерните и нощните еквивалентни нива, разпределени по дни от месеците на разглеждания период.

Групите графики за разглежданите три месеца, представени тук по-долу, дават разпределението на еквивалентните нива на шума, предизвикан от излитащи и кацащи самолети за 24 часов непрекъснат период на измерване. Направена е връзката между денонощните еквивалентни нива на шума, свързан с полети – Airport Leq над наблюдавания район и дневния брой на регистрираните шумови събития от прелитащи въздухоплавателни средства (ВС) от всеки един терминал за съответния период. Резултатите от мониторинга на авиационния шум в населените райони показват, че за 24 часов период няма превишения на граничните стойности за шум L24, предизвикан от излитащи и кацащи ВС.

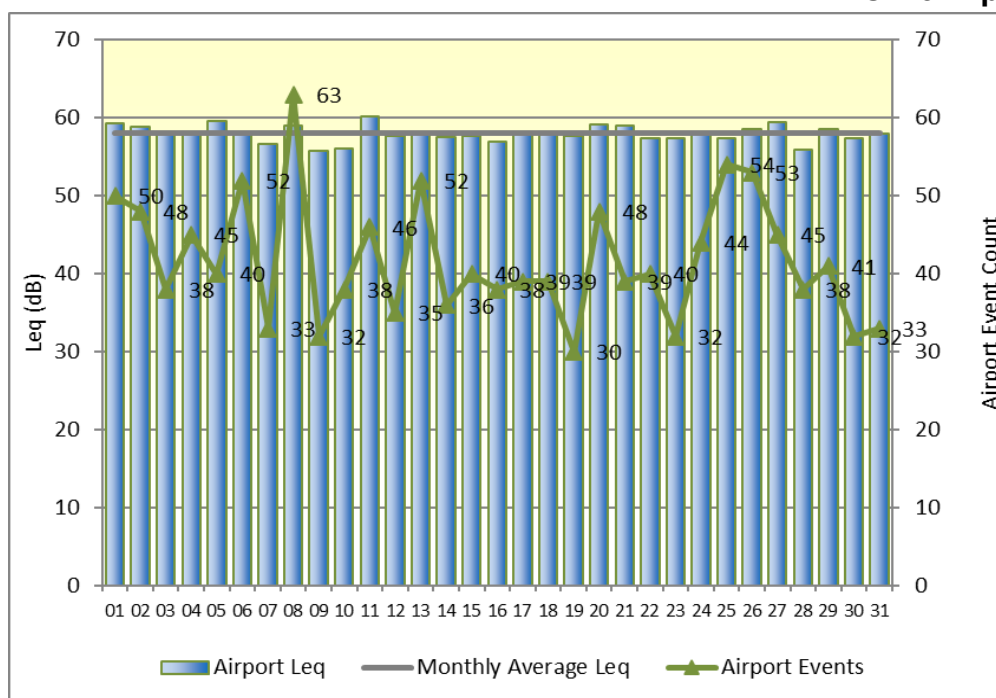
Граничните стойности на показателите за шум в околната среда за територии, подложени на въздействието на авиационен шум са дадени в Наредба № 6/26.06.2006 г. за показателите за шум в околна среда и са както следва:

- За дневен период (07:00 – 19:00 ч.) – $L_{ден} = 65 \text{ dB(A)}$ еквивалентно ниво на шума;
- За вечерен период (19:00 - 23:00 ч.) – $L_{вечер} = 65 \text{ dB(A)}$ еквивалентно ниво на шума;
- За нощен период (23:00 – 07:00 ч.) – $L_{нощ} = 55 \text{ dB(A)}$ еквивалентно ниво на шума;
- За денонощен период – $L_{24} = 66,3 \text{ dB(A)}$ еквивалентно ниво на шума.

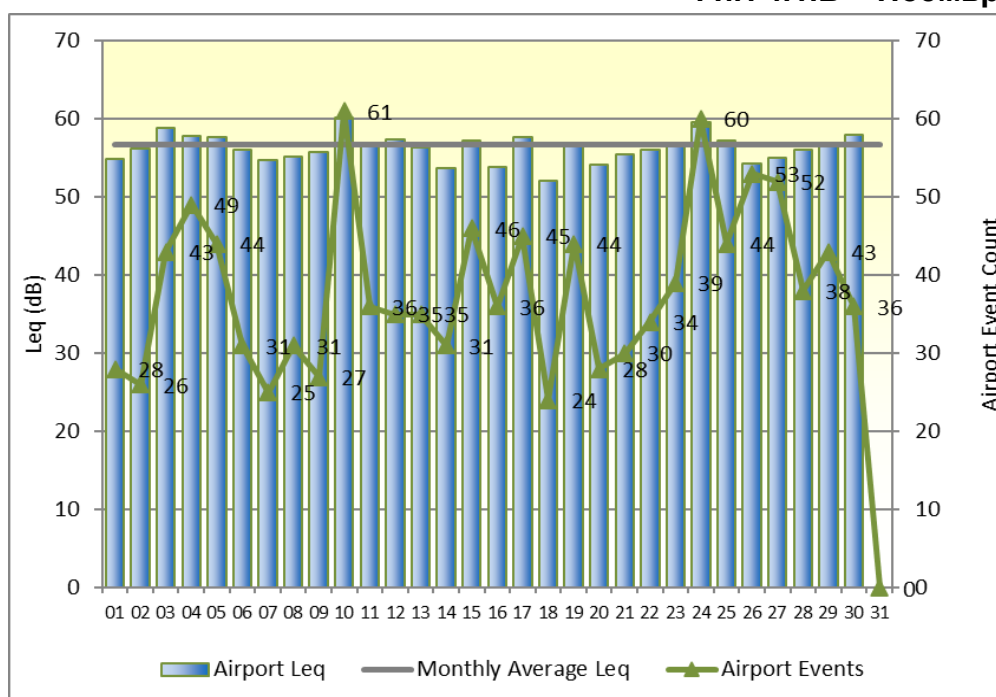
4.1. СЪСТОЯНИЕ НА ОКОЛНАТА СРЕДА – РАЙОН ЛЕТИЩЕ СОФИЯ: ЗАПАДНО НАПРАВЛЕНИЕ, ТЕРМИНАЛ W1

Терминалът за мониторинг на шума, обслужващ западния район на летище София е разположен в охраняемата територия на летището, приблизително на около километър от западния край на пистата за излитане и кацане (ПИК09).

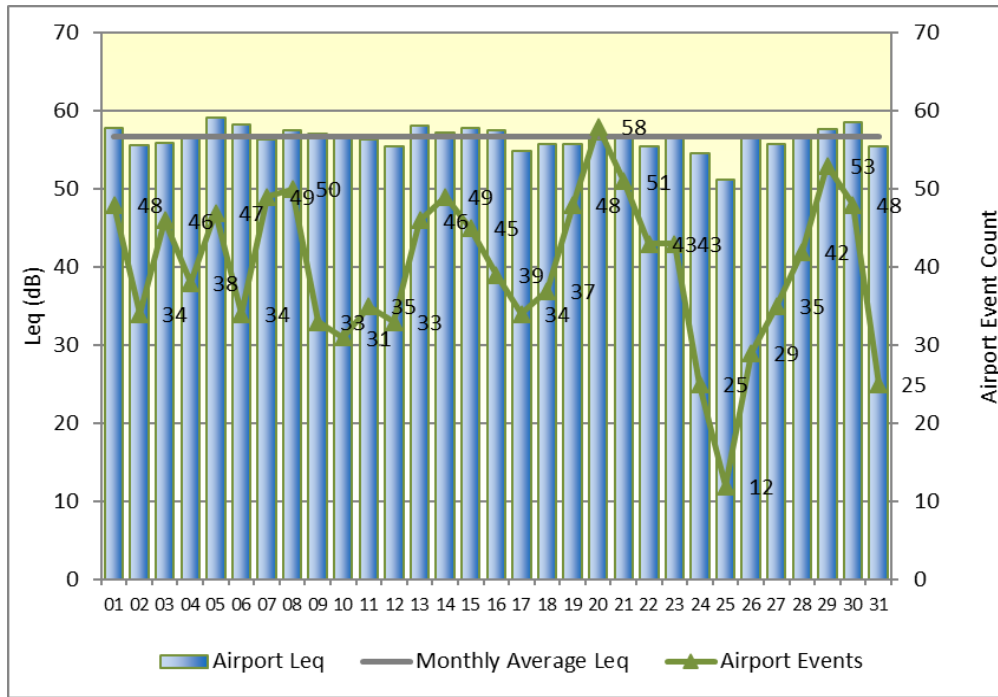
Фиг. 4.1.А – Октомври 2023 г.



Фиг. 4.1.Б – Ноември 2023 г.



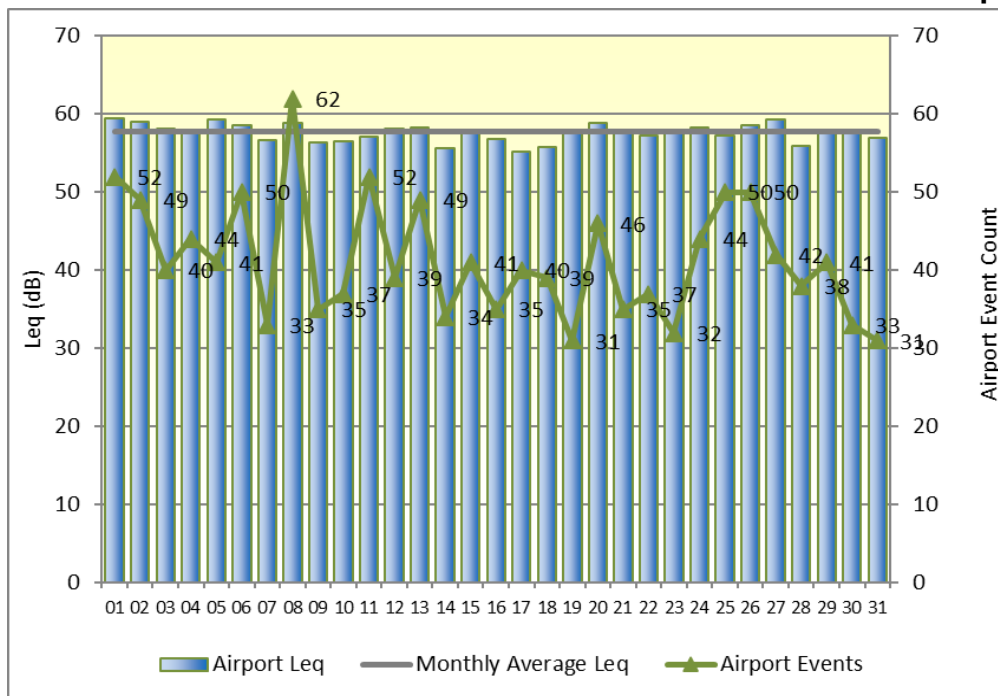
Фиг. 4.1.В – Декември 2023 г.



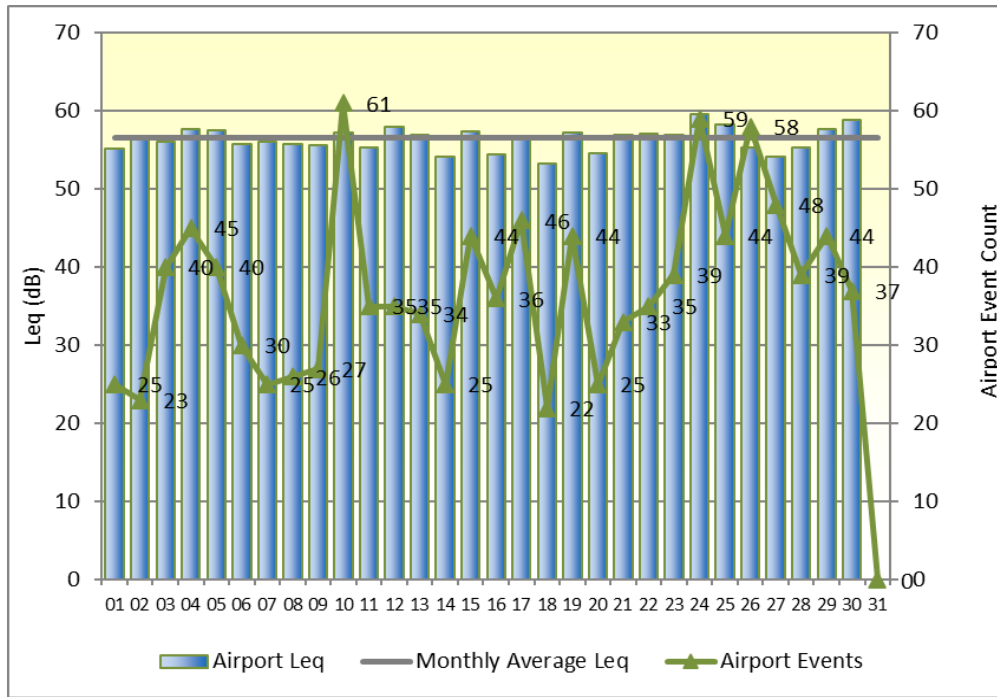
4.2. СЪСТОЯНИЕ НА ОКОЛНАТА СРЕДА – кв. В. ЛЕВСКИ, ТЕРМИНАЛ W2

Терминалът за мониторинг на шума, обслужващ кв. В. Левски е разположен върху покрива на 106 ОУ „Гр. Цамблак“, намиращо се на ул. „Гр. Цамблак“ № 18.

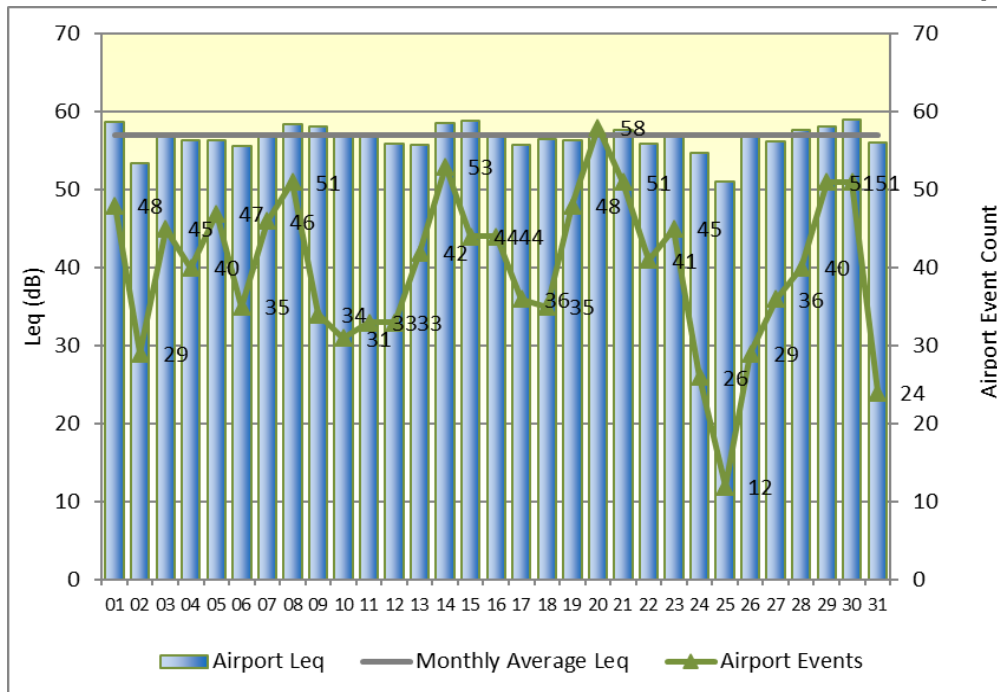
Фиг. 4.2.А – Октомври 2023 г.



Фиг. 4.2.Б – Ноември 2023 г.



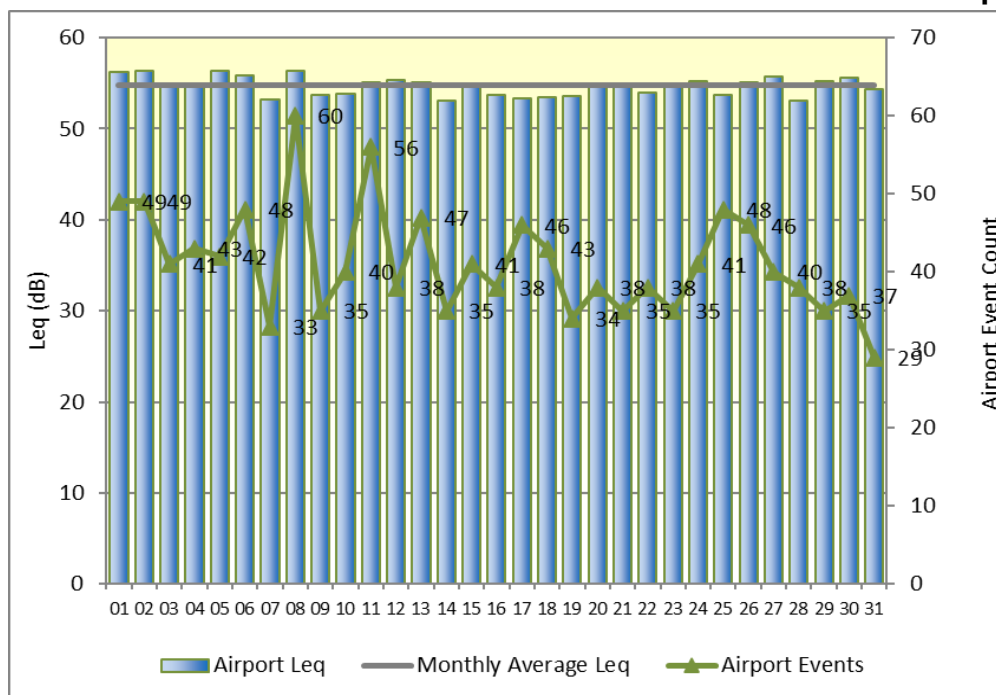
Фиг. 4.2.В – Декември 2023 г.



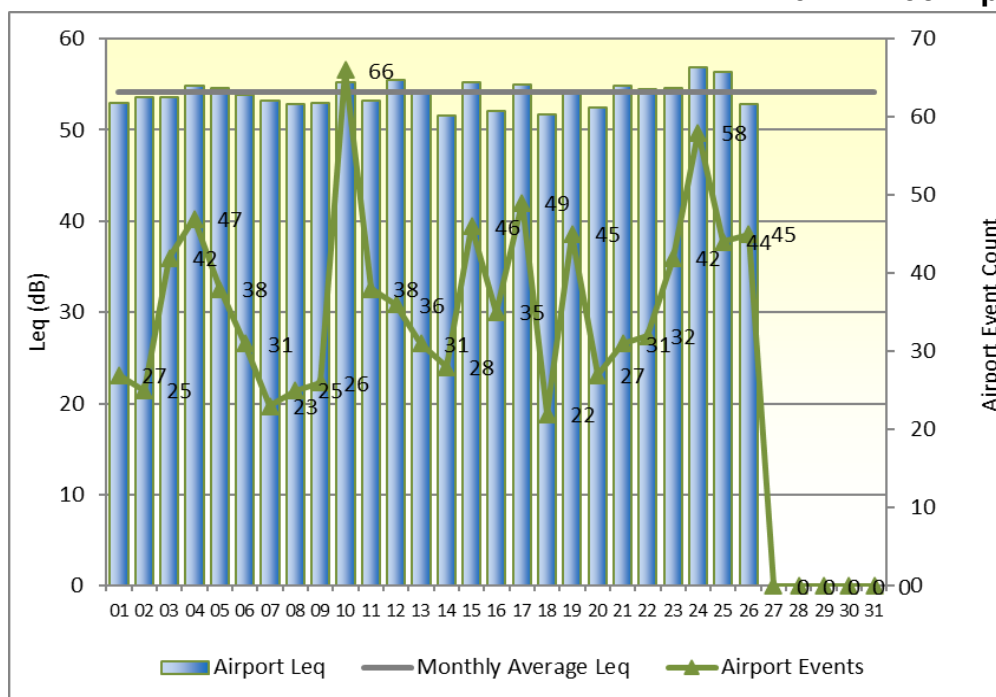
4.3. СЪСТОЯНИЕ НА ОКОЛНАТА СРЕДА – РАЙОН „ПОДУЯНЕ“, ТЕРМИНАЛ W3

Терминалът за мониторинг на шума, обслужващ кв. Суха река е разположен върху покрива на сградата на общината на район „Подуяне“, намираща се на ул. „Плакалница“ № 51.

Фиг. 4.3.А – Октомври 2023 г.

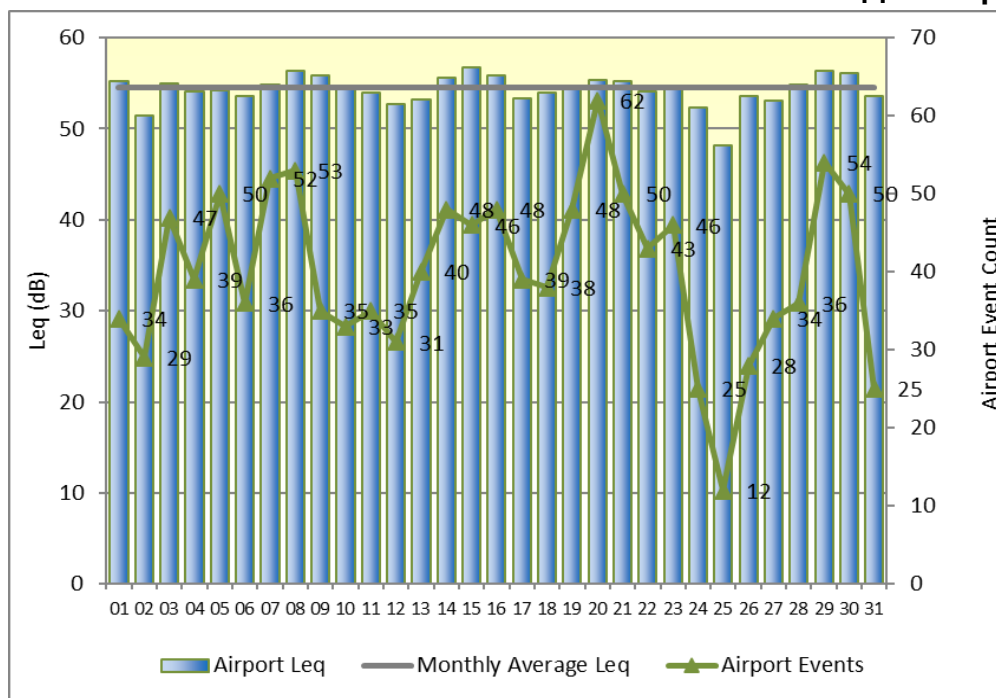


Фиг. 4.3.Б – Ноември 2023 г.



Поради технически проблем терминал W3 не е регистрирал данни в периода 27-30 Ноември 2023 г.

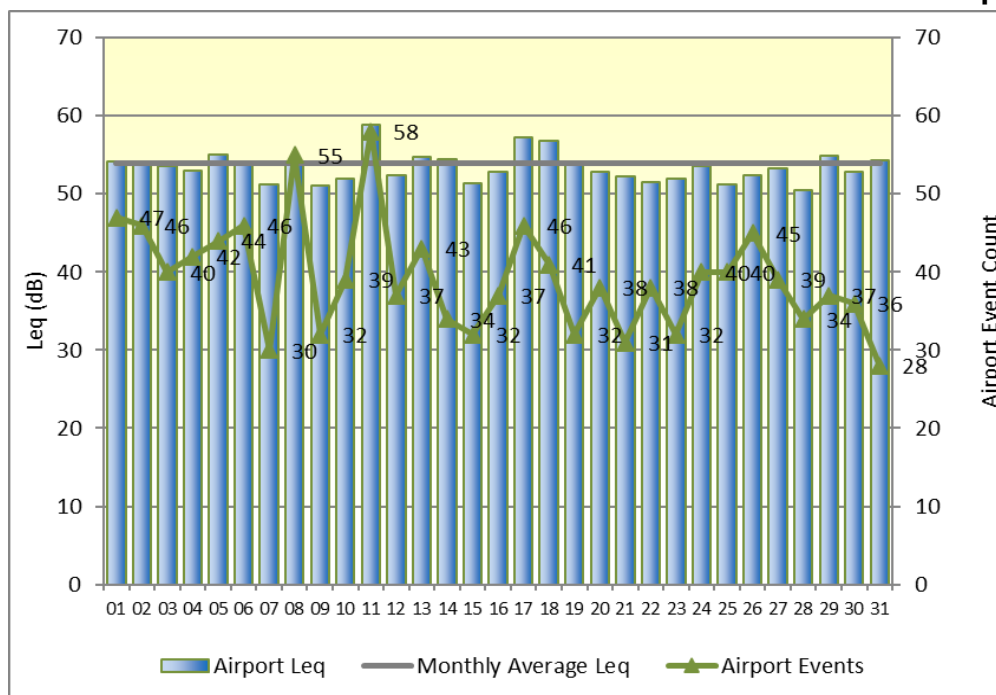
Фиг. 4.3.В – Декември 2023 г.



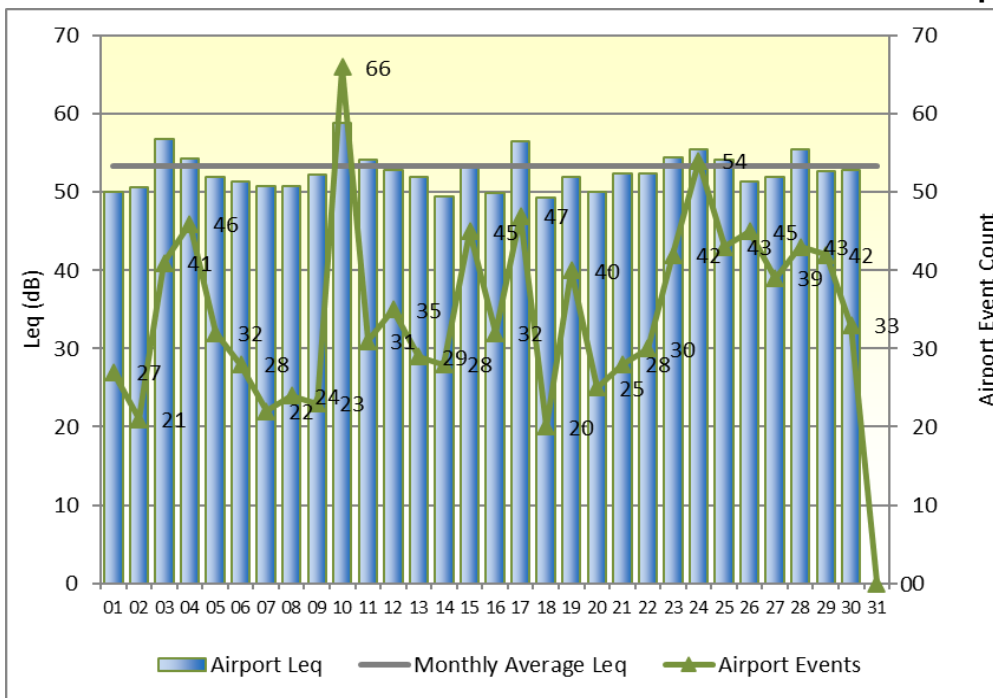
4.4. СЪСТОЯНИЕ НА ОКОЛНАТА СРЕДА – РАЙОН „ПОДУЯНЕ“, ТЕРМИНАЛ W4

Терминалът за мониторинг на шума W4, обслужващ кв. Суха река, район „Подуяне“ е разположен върху покрива на 74 ДГ, намираща се на ул. „Хан Севар“ № 1.

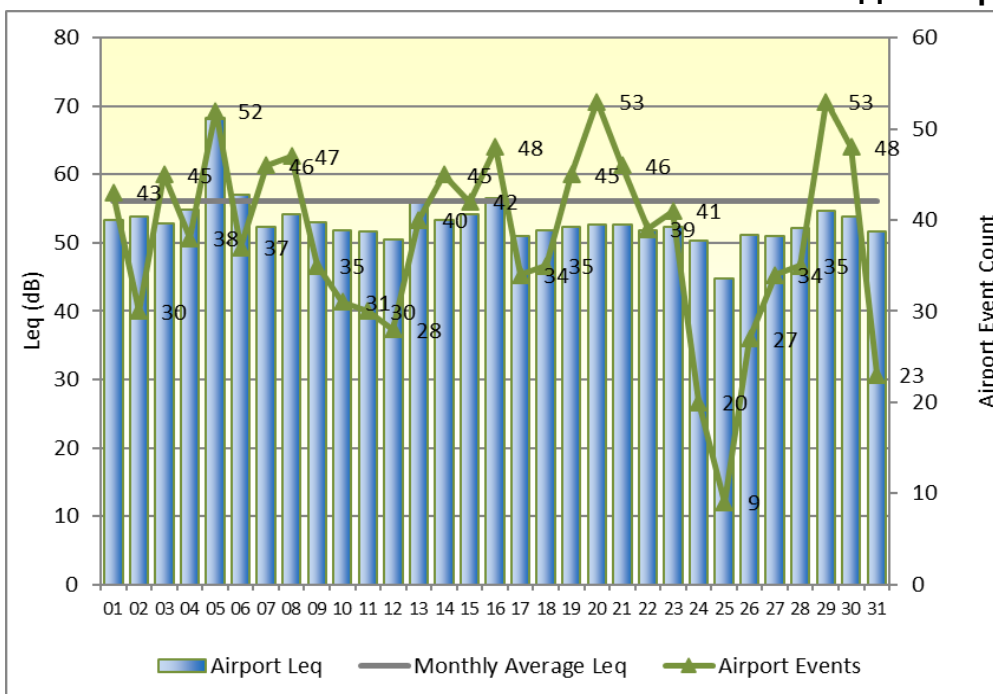
Фиг. 4.4.А – Октомври 2023 г.



Фиг. 4.4.Б – Ноември 2023 г.



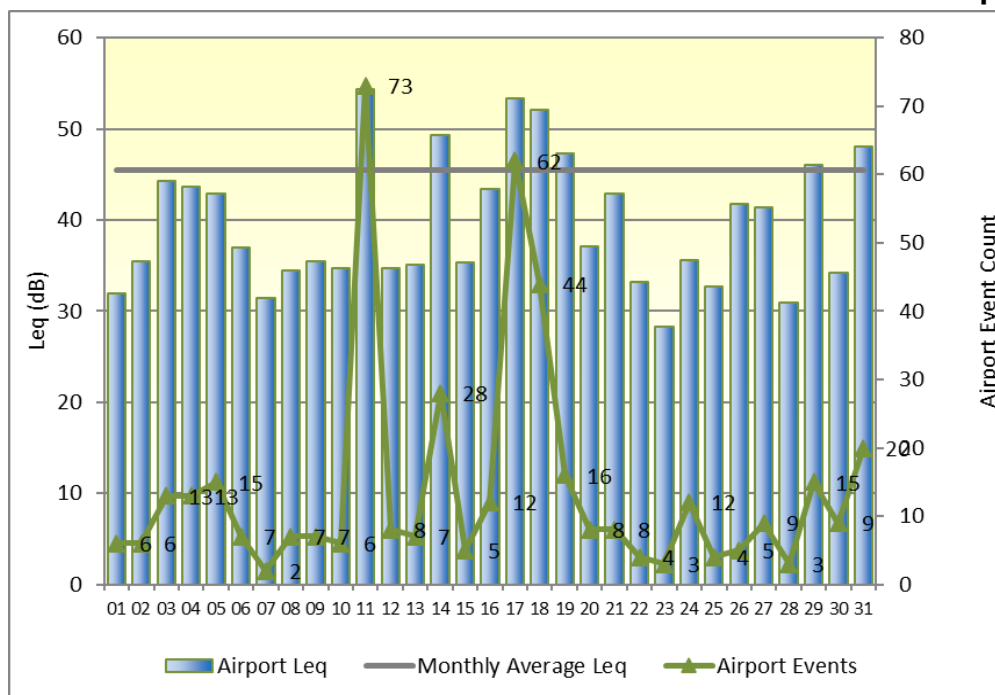
Фиг. 4.4.В – Декември 2023 г.



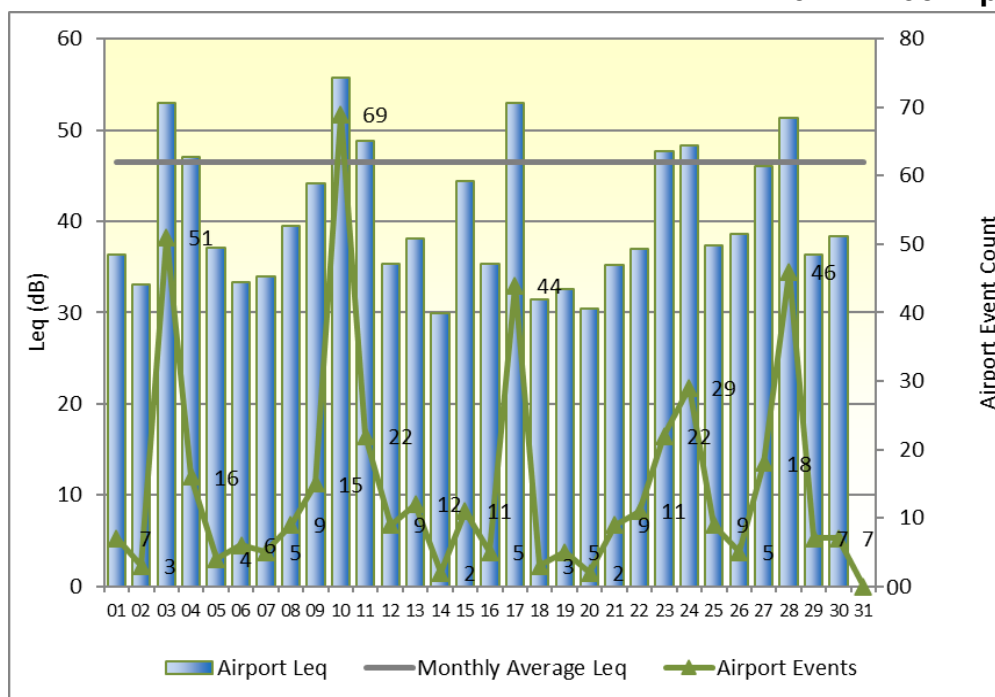
4.5. СЪСТОЯНИЕ НА ОКОЛНАТА СРЕДА – РАЙОН „ОБОРИЦЕ“, ТЕРМИНАЛ W5

Терминал W5 се намира непосредствено под траекториите на самолетите, кацащи от запад и прелитащи над град София – върху сградата на НЧ „Академик Андрей Стоянов“ на ул. „Искър“ № 62.

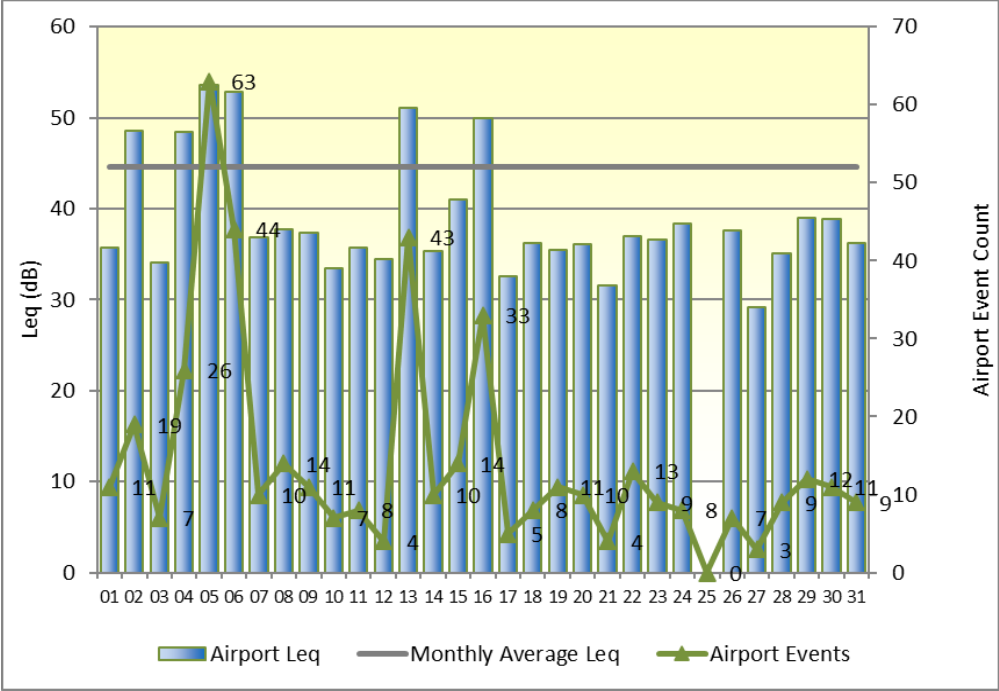
Фиг. 4.5.А – Октомври 2023 г.



Фиг. 4.5.Б – Ноември 2023 г.



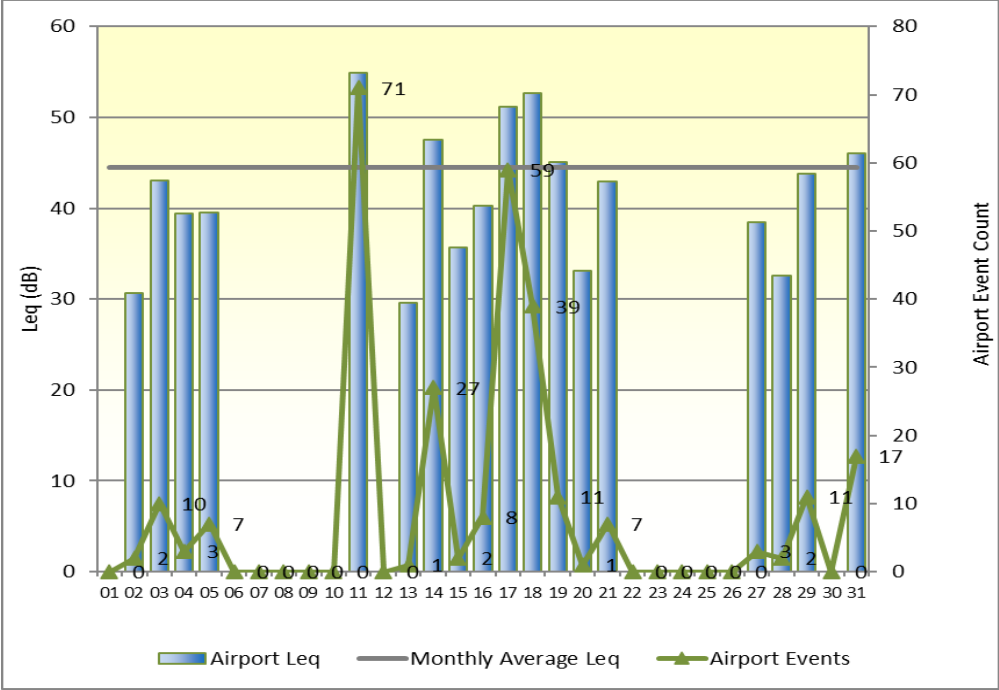
Фиг. 4.5.В – Декември 2023 г.



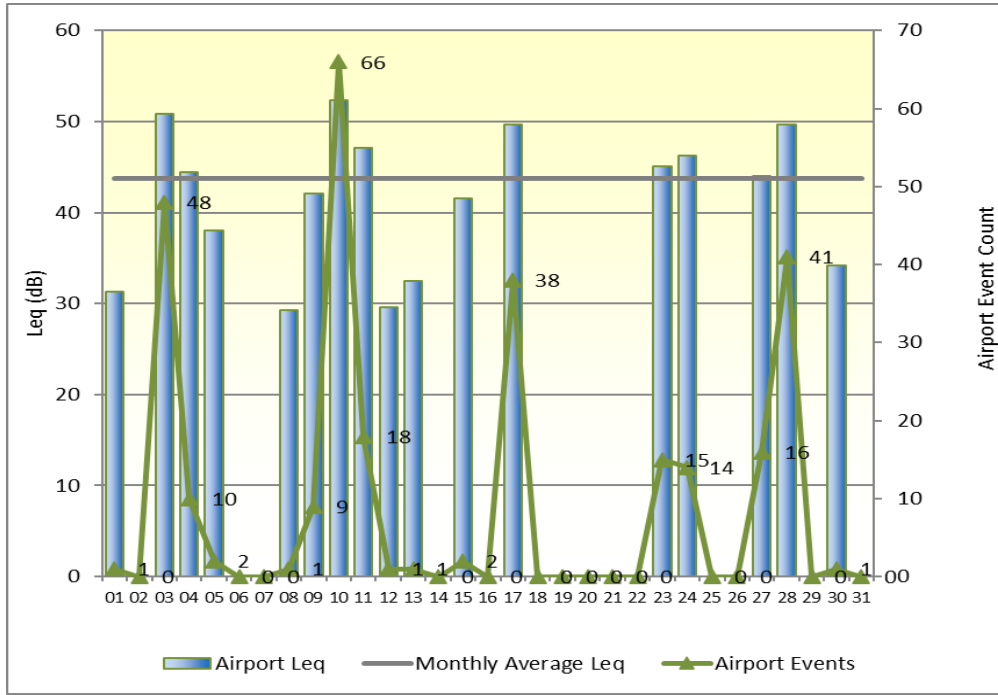
4.6. СЪСТОЯНИЕ НА ОКОЛНАТА СРЕДА – РАЙОН „ВЪЗРАЖДАНЕ“, ТЕРМИНАЛ W6

Терминал W6 е разположен на територията на район „Възраждане“, на сградата на Детска градина № 1, намираща се на ул. „Брегалница“ № 48.

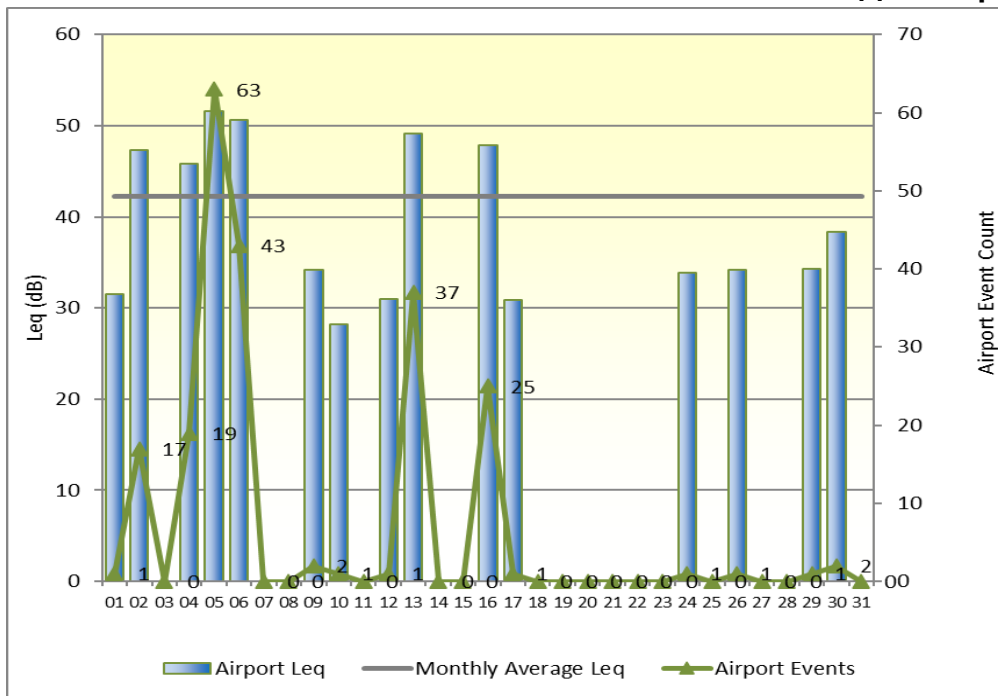
Фиг. 4.6.А – Октомври 2023 г.



Фиг. 4.6.Б – Ноември 2023 г.



Фиг. 4.6.В – Декември 2023 г.



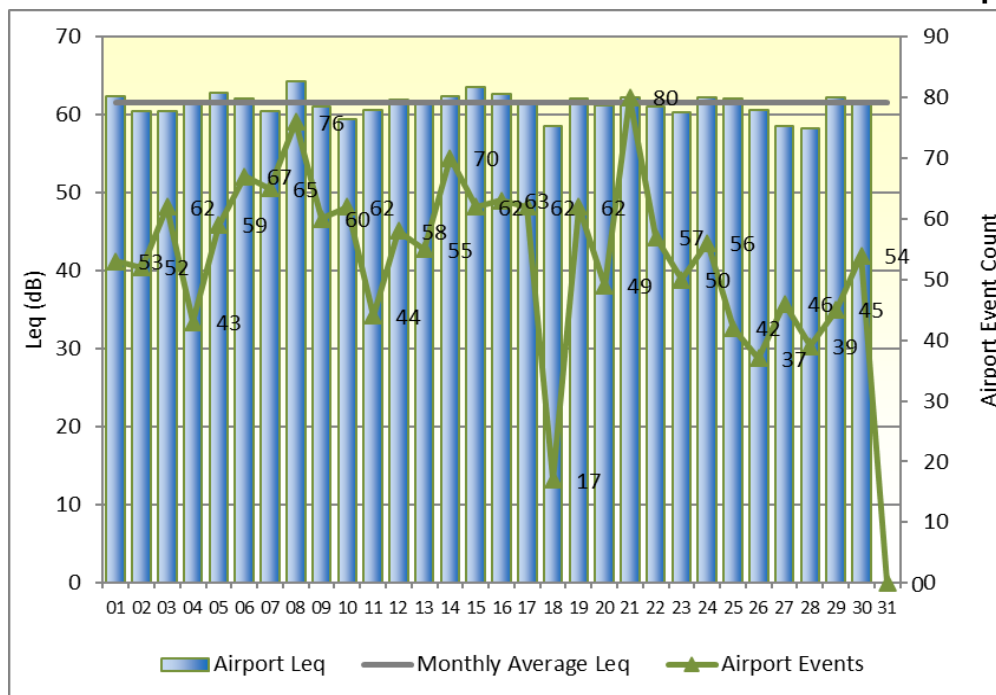
4.7. СЪСТОЯНИЕ НА ОКОЛНАТА СРЕДА – РАЙОН ЛЕТИЩЕ СОФИЯ: ИЗТОЧНО НАПРАВЛЕНИЕ, ТЕРМИНАЛ Е1

Терминал Е1 е разположен в източния край на летище София на около 960 m източно от праг 27 на ПИК и е в непосредствена близост до околновръстното шосе на гр. София. Терминалът регистрира едновременно автомобилен и самолетен шум, поради което регистрираните кумулативни нива на шума са много високи, от порядъка на 70 dB, което основно се дължи на леко и тежкотоварния трафик по околновръстния път.

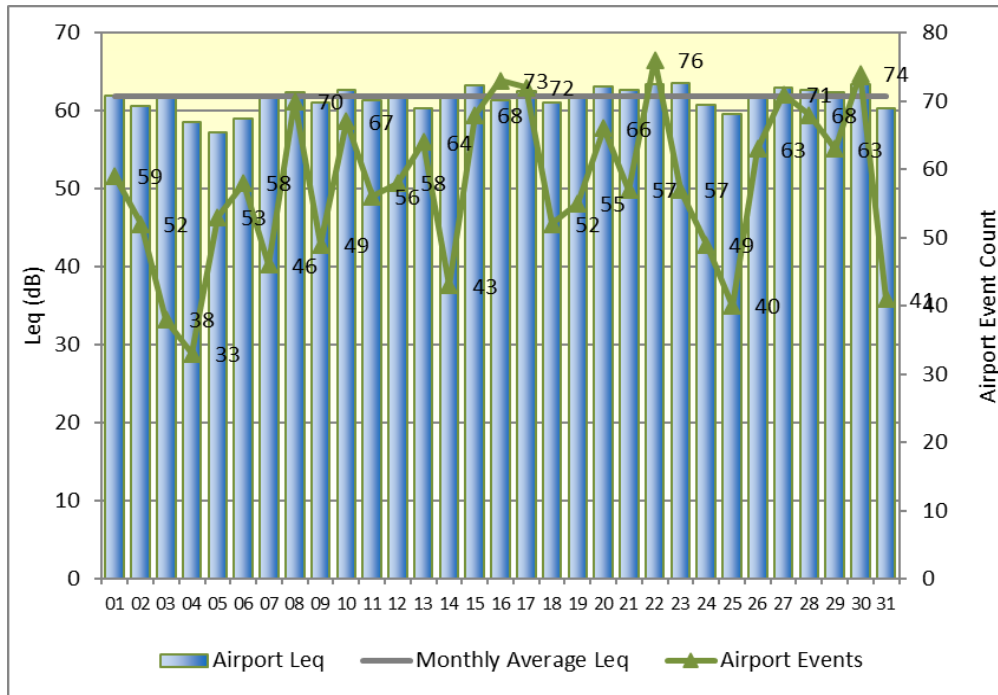
Фиг. 4.7.А – Октомври 2023 г.

Поради технически проблем терминал Е1 не е регистрирал коректно данни през Октомври 2023 г.

Фиг. 4.7.Б – Ноември 2023 г.



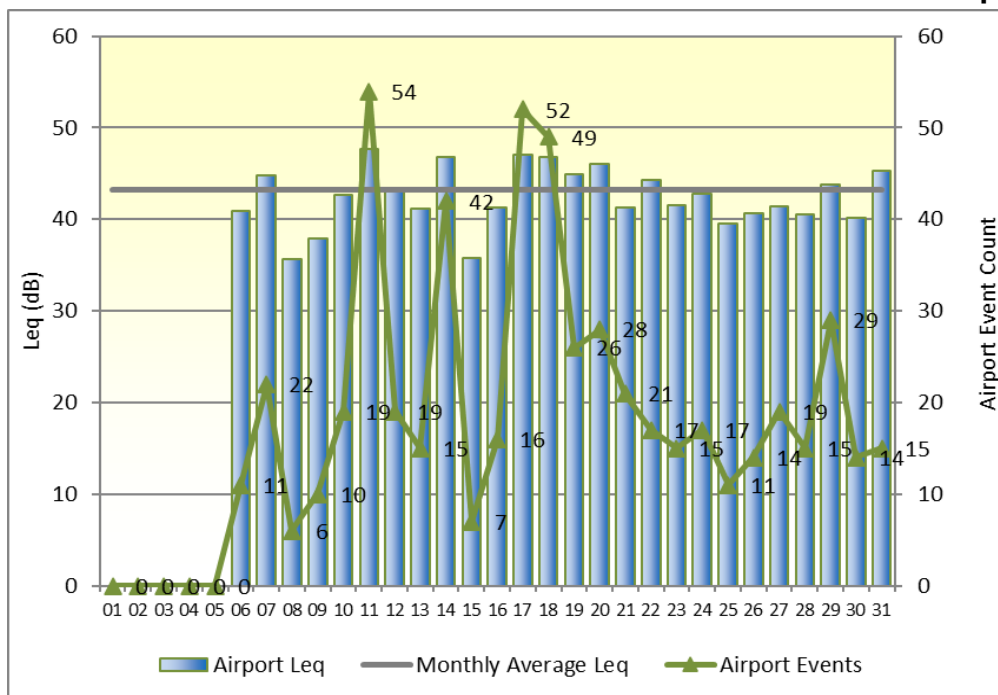
Фиг. 4.7.В – Декември 2023 г.



4.8. СЪСТОЯНИЕ НА ОКОЛНАТА СРЕДА – С. КРИВИНА, ТЕРМИНАЛ Е2

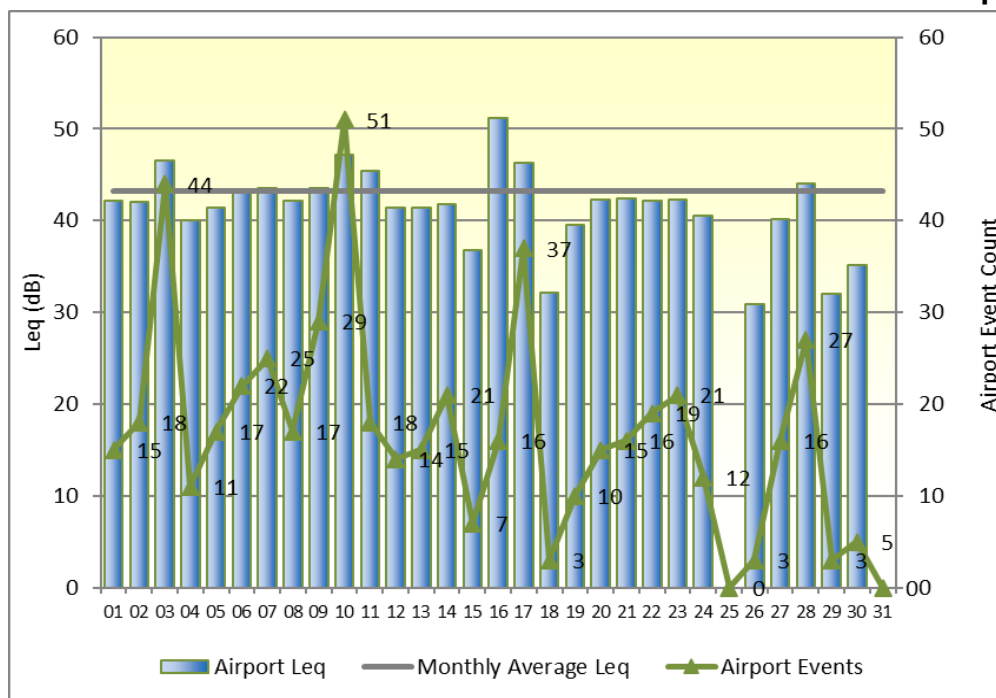
Терминалът за мониторинг на шума Е2 е разположен в двора на 155 ОУ „Св. св. Кирил и Методий“ в с. Кривина, ул. „Просвета“ № 1.

Фиг. 4.8.А – Октомври 2023 г.

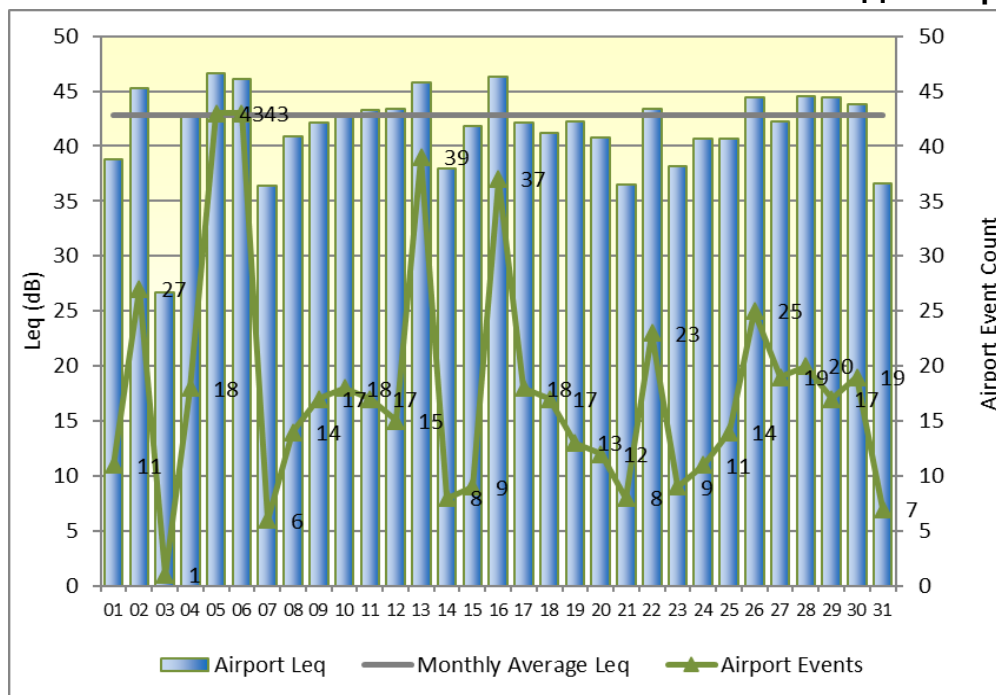


Поради технически проблем терминал Е2 не е регистрирал коректно данни в периода 01-05 октомври 2023 г.

Фиг. 4.8.Б – Ноември 2023 г.



Фиг. 4.8.В – Декември 2023 г.



В таблица 2 са дадени разпределени по терминали месечните средноденонощни еквивалентни нива на кумулативния шум (L_{DEN} общ), нива на шум, дължащи се на полетите (L_{DEN} полети) и нива на фоновия шум (L_{DEN} фон) за четвъртото тримесечие на 2023 година.

Таблица 2

Терминал за мониторинг на шума	Еквивалентно ниво на шума L_{DEN} , dB(A)								
	Октомври 2023 г.			Ноември 2023 г.			Декември 2023 г.		
	L_{DEN} общ	L_{DEN} полети	L_{DEN} фон	L_{DEN} общ	L_{DEN} полети	L_{DEN} фон	L_{DEN} общ	L_{DEN} полети	L_{DEN} фон
W1	64.3	61.1	61.6	63.5	59.9	61.0	64.6	59.9	62.8
W2	64.4	60.7	62.0	63.8	59.8	61.7	68.3	60.2	67.7
W3	63.0	57.9	61.4	62.5	57.4	61.1	65.2	58.0	64.5
W4	61.9	57.5	59.9	62.4	56.8	61.1	68.8	63.9	67.4
W5	59.1	49.7	58.8	59.0	49.4	58.6	60.3	48.3	60.1
W6	58.1	48.1	57.8	54.4	47.1	53.6	60.4	45.9	60.4
E1	-	-	-	72.9	67.0	71.7	72.9	67.0	71.7
E2	55.7	49.9	54.5	56.5	49.5	55.5	61.9	49.1	61.7

5. Брой въздухоплавателни средства по направления за отлитане и долитане над пунктовете за мониторинг

Месечният брой на всички шумови събития, основно предизвикани от отлитащи и долитащи въздухоплавателни средства, регистрирани от стационарните терминали за мониторинг на шума е даден в таблица 3.

Таблица 3

Терминал за мониторинг на шума	Брой регистрирани шумови събития		
	Октомври 2023 г.	Ноември 2023 г.	Декември 2023 г.
W1	1293	1157	1240
W2	1282	1128	1238
W3	1278	959	1246
W4	1219	1063	1179
W5	437	464	443
W6	281	284	215
E1	-	1652	1791
E2	570	530	555

6. Брой превишения на граничните стойности на показателите за шум и тип на въздухоплавателното средство, предизвикало превишението

В Приложения 4, 5 и 6 са показани шумови събития, с ниво на максималния шум L_{max} по-голям от 85 dB(A), регистрирани от стационарните терминали за мониторинг на шума, разположени извън територията на летище София за м. октомври, ноември и декември 2023 г., за които може да се идентифицира съответния им причинител. За всяко едно събитие са дадени датата и часа на регистрацията му, отчетеното ниво на максималния шум L_{max} в dB(A) и типа на въздухоплавателното средство, причинило този шум.

Изготвил:

Нели Панчева,
Ст. еколог, отдел ОС и ИСУ

Съгласувал:

Атанас Стоев,
Ръководител отдел ОС и ИСУ



Monthly Trend - October 2023

Monitor W1: 920m west of RWY 09

AIRPORT

Date	Airport Events	LDEN (00:00-23:59), dB			LDay (07:00-18:59), dB			LEvening (19:00-22:59), dB			LNight (23:00-06:59), dB		
		Total LDEN	Aircraft LDEN	Commun. LDEN	Total Leq	Aircraft Leq	Commun. Leq	Total Leq	Aircraft Leq	Commun. Leq	Total Leq	Aircraft Leq	Commun. Leq
2023-Oct-01	50	65.3	62.8	61.8	63.1	60.7	59.4	61.7	60.4	55.8	56.8	53.5	54.1
2023-Oct-02	48	63.2	60.2	60.2	63.5	60.9	60	61.1	59.2	56.6	49.7	0	49.7
2023-Oct-03	38	64.2	60	62.2	61.9	59.5	58.3	62	60.1	57.6	54.7	0	54.7
2023-Oct-04	45	63.7	60.5	60.9	63.3	59.9	60.7	61.9	58.5	59.2	51.4	48.9	47.9
2023-Oct-05	40	64.6	61.5	61.7	63.7	61.9	58.9	63.1	58.3	61.4	52.8	49.4	50.2
2023-Oct-06	52	64.1	61.1	61.2	62.8	59	60.5	62	60.1	57.6	53.7	50.2	51.2
2023-Oct-07	33	62	58.8	59.2	61.5	58.7	58.3	59.3	57.7	54.3	51.3	43.8	50.4
2023-Oct-08	63	64.8	62.6	60.9	63.1	60.8	59.4	60.8	58.1	57.5	56.1	54.2	51.8
2023-Oct-09	32	61.4	57.2	59.4	61.7	58	59.4	59.3	56.1	56.6	47.7	0	47.7
2023-Oct-10	38	62.4	57.9	60.6	62.1	58.2	59.9	58.9	56	55.8	52	43.7	51.3
2023-Oct-11	46	68.1	65	65.2	64.5	60.8	62.2	65.2	62.5	61.8	59.9	56.8	57
2023-Oct-12	35	64.1	60.5	61.6	63.3	59.7	60.9	60	57.8	55.9	54.7	50.1	52.8
2023-Oct-13	52	63.4	60.6	60.3	63.2	59.7	60.7	62.1	61	55.6	49.4	31.7	49.4
2023-Oct-14	36	65.3	61.6	62.9	60.2	58.7	54.9	61.9	58.9	58.9	57.9	53.2	56.2
2023-Oct-15	40	65.4	61.8	62.9	62.1	59.2	59	62.1	57.4	60.3	57.4	53.9	54.6
2023-Oct-16	38	62.1	57.8	60.1	62.3	59.5	59.1	58.8	54.6	56.7	50.4	29.8	50.4
2023-Oct-17	39	66.3	62.9	63.8	63.3	59	61.4	62.8	57.5	61.3	58.3	55.7	54.8
2023-Oct-18	39	63.4	59	61.5	63.6	60.2	60.9	61.4	56.5	59.7	49.9	39.9	49.5
2023-Oct-19	30	65.5	61.5	63.4	62.8	59.1	60.3	63.8	58.9	62.1	56.1	52.5	53.6
2023-Oct-20	48	66.6	62.9	64.2	63.9	61	60.9	59.7	56.1	57.2	59.3	55.1	57.1
2023-Oct-21	39	65.4	61.7	62.9	62.5	60.7	57.8	61.7	60.1	56.8	57.3	49.9	56.3
2023-Oct-22	40	63.7	59.5	61.6	62.6	59.3	59.8	60.2	58.4	55.6	54.2	44.9	53.7
2023-Oct-23	32	63.1	58.7	61.1	62.9	60	59.8	60.5	56.7	58.1	51.4	0	51.4
2023-Oct-24	44	65.4	63.5	61	62.4	59.4	59.3	59.6	57.1	56.1	58.1	56.7	52.6
2023-Oct-25	54	62.8	59	60.5	62.5	59.5	59.6	60.3	58.1	56.4	51.2	30.8	51.2
2023-Oct-26	53	63.9	62.4	58.8	62.6	59.8	59.4	60.3	60	49.6	54.8	53.3	49.2
2023-Oct-27	45	63.6	61.3	59.7	63.3	61.5	58.7	61.5	60.3	55.6	51.3	44.1	50.5
2023-Oct-28	38	62.3	58.9	58.8	60.5	57.3	57.7	60.1	58.8	54.3	52.6	46	49.7
2023-Oct-29	41	64.3	60.9	61.6	62.3	60.6	57.5	62.2	57.4	60.5	54.7	50.5	52.5
2023-Oct-30	32	63	60.6	59.4	61.3	58.8	57.7	61.2	59.4	56.7	52.8	49.6	50
2023-Oct-31	33	63	59.2	60.7	62.4	59.5	59.2	61.4	56.6	59.8	46	0	46



Monthly Trend - October 2023

Monitor W2: 18, Gr. Tzambalak Str., 106 School

AIRPORT

Date	Airport Events	LDEN (00:00-23:59), dB			LDay (07:00-18:59), dB			LEvening (19:00-22:59), dB			LNight (23:00-06:59), dB		
		Total LDEN	Aircraft LDEN	Commun. LDEN	Total Leq	Aircraft Leq	Commun. Leq	Total Leq	Aircraft Leq	Commun. Leq	Total Leq	Aircraft Leq	Commun. Leq
2023-Oct-01	52	66.4	63.2	63.6	63.5	60.7	60.3	62.6	60.5	58.4	58.3	54.4	56.1
2023-Oct-02	49	64	60.6	61.5	64.3	61	61.7	62.2	59.8	58.6	49.5	0	49.5
2023-Oct-03	40	64.2	60.5	61.9	62.5	59.5	59.6	62.6	60.7	58.2	53.9	41.9	53.6
2023-Oct-04	44	64.2	60.6	61.7	63.1	59	60.9	62.6	59	60.2	52.8	50	49.6
2023-Oct-05	41	64.5	61.3	61.8	63.9	61.6	60	61.8	57	60.1	53.9	50.3	51.4
2023-Oct-06	50	64.8	61.8	61.8	63.3	59.9	60.6	62.9	60.5	59.2	54.5	51.2	51.8
2023-Oct-07	33	62.5	59.1	59.8	61.6	58.5	58.6	60.7	58.3	57.2	51	44.7	49.8
2023-Oct-08	62	66	63	63	63.7	60.4	61.2	61.9	58.7	59.2	57.7	55	54.4
2023-Oct-09	35	62.2	57.9	60.2	62.3	58.4	60.1	60.4	57.2	57.8	48.2	0	48.2
2023-Oct-10	37	63	57.8	61.5	62.7	58.7	60.8	60	56.6	57.4	51.9	0	52
2023-Oct-11	52	65.7	62.2	63.2	61.7	57.1	59.8	63	60.1	60.1	57.7	54.2	55.2
2023-Oct-12	39	65.2	60.9	63.3	63.3	59.9	60.8	62.3	58.5	60.1	56	50.5	54.7
2023-Oct-13	49	63.7	60.7	60.8	63.3	59.5	60.9	62.5	61.4	56.2	50.3	0	50.3
2023-Oct-14	34	64.9	59	64	59.6	57.3	55.9	61.6	55.5	61	57.5	50.1	57
2023-Oct-15	41	67.4	62.2	66	62.3	58.8	59.7	63.1	57.8	61.7	60.3	54.6	59.1
2023-Oct-16	35	62.7	57.6	61.3	62.5	59.4	59.8	58.8	54.1	57	52.3	0	52.5
2023-Oct-17	40	64.3	60.3	62.3	61.2	56.2	59.6	60.9	55.5	59.3	56.3	53	53.7
2023-Oct-18	39	62.5	57.5	61	61.1	57.5	58.6	60.8	57.2	58.3	51.8	0	52
2023-Oct-19	31	64.8	60.8	62.7	63.2	59.4	60.9	61.2	57.1	59.1	55.9	51.7	53.9
2023-Oct-20	46	67	62.9	64.9	63.7	60.9	60.6	60.1	54.7	58.6	60.1	55.6	58.2
2023-Oct-21	35	64.1	60.3	61.9	62.4	59.6	59.1	62.3	59.9	58.8	54	44.5	53.5
2023-Oct-22	37	63.3	59.3	61.1	62.5	59	59.9	61.1	58.7	57.3	52.3	43	51.8
2023-Oct-23	32	63.3	58.7	61.5	63	59.9	60	61.9	56.7	60.4	49.8	0	49.9
2023-Oct-24	44	65.6	63.5	61.4	62.6	59.2	60	61	58.3	57.6	57.9	56.4	52.4
2023-Oct-25	50	63	59	60.8	62.5	59.3	59.7	61.1	58.5	57.6	51	0	51
2023-Oct-26	50	64.3	62.6	59.7	62.9	59.7	60.1	61.4	60.4	54.7	54.9	53.7	48.8
2023-Oct-27	42	63.6	61.1	60	63.4	61.2	59.2	61.7	60.1	56.7	51.1	44.2	50.1
2023-Oct-28	38	63.1	59.2	60	61.4	57.1	59.5	61	59	56.8	53.3	47.1	49.8
2023-Oct-29	41	63.7	60	61.4	62.8	60.3	59.3	60.8	56	59.2	53.7	48.9	52
2023-Oct-30	33	63.9	61.3	60.5	61.9	59	58.7	62.3	60.2	58.4	53.7	51	50.5
2023-Oct-31	31	62	57.8	59.9	62.1	58.8	59.4	58.8	53.9	57.2	48.1	0	48.1

Monthly Trend - October 2023

Monitor W3: 51 Plakalnica Str. City Hall

AIRPORT

Date	Airport Events	LDEN (00:00-23:59), dB			LDay (07:00-18:59), dB			LEvening (19:00-22:59), dB			LNight (23:00-06:59), dB		
		Total LDEN	Aircraft LDEN	Commun. LDEN	Total Leq	Aircraft Leq	Commun. Leq	Total Leq	Aircraft Leq	Commun. Leq	Total Leq	Aircraft Leq	Commun. Leq
2023-Oct-01	49	63.5	59.9	61.2	60.7	57.4	58	60.5	57.6	57.6	55	50.6	53.1
2023-Oct-02	49	68.9	58	68.5	71.4	58.2	71.2	60	57.6	56.8	50	0	50
2023-Oct-03	41	62.5	57	61.1	61	56.3	59.3	59.9	57	56.9	52.7	38	52.6
2023-Oct-04	43	62.2	58	60.2	60.9	55.7	59.5	60.3	56.9	57.7	51.5	47.5	49.4
2023-Oct-05	42	62.8	58.8	60.7	61.5	58.5	58.6	59.9	54.6	58.4	53.1	48.6	51.2
2023-Oct-06	48	63.1	59.6	60.5	61.1	56.5	59.4	60.6	58.8	56	53.7	49.5	51.6
2023-Oct-07	33	60.8	55.8	59.2	59.5	54.9	57.7	58.1	55.1	55.2	51	42.5	50.4
2023-Oct-08	60	63.3	60.1	60.7	61.2	58.1	58.5	59.8	56.3	57.3	54.7	51.5	52
2023-Oct-09	35	60.7	55.3	59.3	60.5	55.7	58.8	58.3	54.6	55.9	49.1	0	49.1
2023-Oct-10	40	61.3	55.2	60.1	61	56.1	59.5	57.8	53.9	55.7	50.7	0	50.7
2023-Oct-11	56	63.7	60.4	61.1	60.8	55.1	59.6	60.7	58.3	57.4	55.2	52.2	52.1
2023-Oct-12	38	63.5	58.2	62.1	61.7	57.3	59.8	59.4	55.9	57.1	54.8	47.4	54
2023-Oct-13	47	62.4	57.6	60.7	61.4	56.2	59.9	60.6	58.4	56.6	51.1	0	51.1
2023-Oct-14	35	61.5	56.5	59.9	58.5	54.9	56.1	58.1	53.2	56.5	53.3	47.3	52.1
2023-Oct-15	41	66.1	59.5	65	59.6	55.9	57.3	60.9	55.1	59.6	59.7	52.1	58.7
2023-Oct-16	38	60.8	54.6	59.7	60.6	56.3	58.8	56.8	51.7	55.2	50.5	0	50.6
2023-Oct-17	46	63.1	58.5	61.4	60.8	54	60	59.5	54.6	58	54.6	51.1	52.2
2023-Oct-18	43	61.8	55.3	60.8	60.6	55.4	59.2	59.7	54.9	58	51.4	0	51.4
2023-Oct-19	34	62.9	57.9	61.4	60.8	54.9	59.7	59.2	54.8	57.3	54.4	49.6	52.8
2023-Oct-20	38	63.9	58.7	62.5	61.4	57.1	59.6	57.6	52.5	56.1	56.3	50.6	55
2023-Oct-21	35	61.4	56.9	59.6	59.6	56.1	57.1	59	56.7	55.3	51.8	41.5	51.5
2023-Oct-22	38	61.4	56.1	59.9	59.8	56	57.6	58.6	55	56.3	51.9	41.3	51.6
2023-Oct-23	35	61.7	56.2	60.3	61.4	56.8	59.6	59.3	55.2	57.3	50.1	0	50.1
2023-Oct-24	41	63.4	60.2	60.6	60.9	56.2	59.3	59	55.3	56.7	55.4	53	51.5
2023-Oct-25	48	61.4	55.7	60.1	60.4	55.3	59	59.2	55.8	56.6	50.7	0	50.8
2023-Oct-26	46	62.6	59.6	59.8	60.8	55.8	59.3	59.1	57.2	54.7	53.9	51.3	50.4
2023-Oct-27	40	61.8	57.5	59.9	61.3	57.6	58.9	59.2	56.6	55.8	50.9	38.6	50.6
2023-Oct-28	38	61.6	56.7	59.1	59.5	53.9	58.2	59.1	56.7	55.4	52.3	45.2	49.6
2023-Oct-29	35	62	57.3	60.3	60.4	57.5	57.4	58.9	53.2	57.7	52.7	46.4	51.6
2023-Oct-30	37	62.4	59.3	59.6	60.4	56.4	58.2	60.3	58.4	56.1	52.7	49	50.5
2023-Oct-31	29	61.2	55.3	60	60.9	56	59.3	57.7	52.1	56.4	50.3	0	50.3



Monthly Trend - October 2023

Monitor W4: 1, Han Sevar Str., 74 DG

AIRPORT

Date	Airport Events	LDEN (00:00-23:59), dB			LDay (07:00-18:59), dB			LEvening (19:00-22:59), dB			LNight (23:00-06:59), dB		
		Total LDEN	Aircraft LDEN	Commun. LDEN	Total Leq	Aircraft Leq	Commun. Leq	Total Leq	Aircraft Leq	Commun. Leq	Total Leq	Aircraft Leq	Commun. Leq
2023-Oct-01	47	62.1	58.4	59.8	58.4	54.5	56.3	59.6	57.2	56	53.8	49.1	52.1
2023-Oct-02	46	62.3	55.4	61.3	63.9	55.8	63.1	57.6	54.8	54.8	46.8	0	46.9
2023-Oct-03	40	62.7	56.9	61.4	60.5	54.8	59.3	58.8	55.9	55.7	54.3	46.1	53.5
2023-Oct-04	42	60.5	56	58.7	60.2	54.5	59	58	54.6	55.4	49.1	45	47
2023-Oct-05	44	61.8	57.6	59.8	60.7	56.9	58.5	60.2	55.8	58.2	50.6	45.8	48.9
2023-Oct-06	46	61.4	57.4	59.3	60.4	55	59.1	58.3	56	54.7	51.6	47.4	49.5
2023-Oct-07	30	59.2	53.7	57.7	58.3	53.1	56.9	55.9	52.4	53.5	49.2	41	48.5
2023-Oct-08	55	62	57.6	60.1	59.2	55.4	57	58.2	54.2	56.2	53.8	48.9	52.2
2023-Oct-09	32	59.2	52.6	58.2	59.8	53.1	58.8	56	51.9	54	46.6	0	46.6
2023-Oct-10	39	59.8	52.9	58.9	60.5	54.3	59.5	55.8	50.8	54.2	47.5	0	47.5
2023-Oct-11	58	65.9	64	61.4	63.1	59.1	61	63.3	61.9	57.7	57.1	55.8	51.3
2023-Oct-12	37	60.6	55.4	59.1	60.6	54.1	59.5	56.7	53.3	54.1	50.1	45.1	48.5
2023-Oct-13	43	61.8	58.3	59.3	60.2	53.6	59.2	61.6	60.3	55.9	48.4	0	48.4
2023-Oct-14	34	62.8	59	60.5	57.6	55.2	53.8	59.7	56.6	56.8	55.3	50.7	53.6
2023-Oct-15	32	64.5	56.3	63.9	57	52.1	55.3	62	52.5	61.4	57.2	48.8	56.7
2023-Oct-16	37	60.9	54.6	59.7	60.2	54.6	58.9	57.4	54.4	54.3	50.9	0	50.9
2023-Oct-17	46	65.5	62.3	62.6	62.6	57.9	60.9	62	58.6	59.3	57.3	54.9	53.6
2023-Oct-18	41	62.9	57.8	61.4	63	59.4	60.6	59.5	55	57.6	51.8	0	51.8
2023-Oct-19	32	62.8	58.9	60.5	60.2	53.6	59.2	61.5	58.5	58.5	52.7	49.4	50
2023-Oct-20	38	61.7	56.3	60.3	60.3	54.8	59.1	56	52	53.8	53.3	47.6	52
2023-Oct-21	31	61.2	56.1	59.7	56.7	52.8	54.5	57.4	55.5	52.8	53.8	45.6	53.2
2023-Oct-22	38	58.6	53.7	57	57.1	53.5	54.7	56	52.6	53.6	49	39.4	48.5
2023-Oct-23	32	59.9	53.4	58.9	60.3	54	59.3	57.2	52.4	55.5	46.7	0	46.7
2023-Oct-24	40	62.7	60	59.3	60.3	53.7	59.3	57	53.1	54.8	55	53.6	49.1
2023-Oct-25	40	59.8	53.3	58.8	59.5	52.6	58.7	57.6	53.7	55.4	48	0	48
2023-Oct-26	45	60.8	57	58.6	60.2	53	59.5	57	54.8	53.1	50.9	48.5	47.2
2023-Oct-27	39	60.7	55.1	59.4	61	55.3	59.9	56.9	54.3	53.7	49.1	35.1	49
2023-Oct-28	34	59.4	54.5	56.8	57	51.2	55.8	56.5	54	53	50.5	44.1	47.4
2023-Oct-29	37	62.5	59.5	59.5	58.3	55.6	55.1	60.1	56.8	57.4	54.3	51.5	51.1
2023-Oct-30	36	60.6	56.6	58.4	58	53.8	56	57.7	55.6	53.6	51.9	46.6	50.5
2023-Oct-31	28	61.5	56.6	59.9	59.8	55	58.1	60.5	56.2	58.6	48.1	0	48.1

Monthly Trend - October 2023

Monitor W5: 2, Prof. N. RayOct Str., Art School

AIRPORT

Date	Airport Events	LDEN (00:00-23:59), dB			LDay (07:00-18:59), dB			LEvening (19:00-22:59), dB			LNight (23:00-06:59), dB		
		Total LDEN	Aircraft LDEN	Commun. LDEN	Total Leq	Aircraft Leq	Commun. Leq	Total Leq	Aircraft Leq	Commun. Leq	Total Leq	Aircraft Leq	Commun. Leq
2023-Oct-01	6	56.2	38.1	56.2	54.7	32	54.8	53.5	33	53.5	46.6	31.4	46.4
2023-Oct-02	6	58.8	36.5	59.1	60	38	60.3	54.7	33.7	54.9	45.2	0	45.2
2023-Oct-03	13	59.3	48.7	59	58	45.1	58	56.7	46.5	56.3	49.4	40.1	48.9
2023-Oct-04	13	58.8	44.6	59.1	59.5	46.5	59.9	53.7	38.8	53.6	47.7	28.4	47.6
2023-Oct-05	15	60.1	47.5	60.1	58.2	38.3	58.4	56.7	49.6	55.8	51.5	28.9	51.6
2023-Oct-06	7	58.9	40.2	59.1	59.1	39.3	59.5	53.6	32.4	53.6	48.7	32	48.6
2023-Oct-07	2	59.5	32.1	59.7	58.3	34.1	58.7	52.8	28.1	52.8	51.4	0	51.4
2023-Oct-08	7	60.3	39	60.3	59	34.2	59.1	59.9	38.5	59.9	46.9	29.5	46.8
2023-Oct-09	7	59.5	35.9	59.9	60.6	38.3	61.1	53	29.7	53.1	48.2	0	48.3
2023-Oct-10	6	58.2	36.7	58.3	57.8	36.4	57.9	52.9	36.7	52.9	48.9	0	48.8
2023-Oct-11	73	62.2	58.9	59.5	60	54.7	58.7	59.3	57.1	55.4	53.2	50.3	50.1
2023-Oct-12	8	58.2	36.3	58.3	58.4	37.4	58.7	54.7	29.2	54.7	46.7	25.2	46.6
2023-Oct-13	7	59.7	36.3	59.9	58.2	37.8	58.5	55	33.8	55.1	51.2	0	51.3
2023-Oct-14	28	60.6	54.3	59.7	58.6	49.6	58.5	56	52	53.9	52.4	46.3	51.2
2023-Oct-15	5	56.8	39.1	56.8	53.6	34.1	53.6	53.1	41.2	52.9	48.9	0	48.9
2023-Oct-16	12	58.5	46.6	58.3	58.1	43.6	58.2	55	48.1	54	48.2	0	48.1
2023-Oct-17	62	61.8	58	59.6	59.9	54.4	58.7	57.9	54.8	54.9	53.3	50	50.6
2023-Oct-18	44	61.5	52.9	61	60.2	54.8	59	56.8	49.2	56.1	52.8	0	52.9
2023-Oct-19	16	60.3	52.3	59.7	58.9	45.9	59.1	57.6	53.2	55.5	50.6	40.6	50.2
2023-Oct-20	8	58.7	41	58.8	58.9	35.3	59.1	53.6	43.2	53.3	48.6	0	48.6
2023-Oct-21	8	59.8	51.4	59.3	57.2	30	57.5	52.3	46.6	50.8	52.6	45.4	51.7
2023-Oct-22	4	55.9	36.5	55.9	53.8	34.8	53.8	54.8	35.6	54.9	45	25.2	44.9
2023-Oct-23	3	57.9	30.6	58.1	58.4	29.5	58.7	53.1	31.3	53.1	46.8	0	46.7
2023-Oct-24	12	58.9	41.3	58.9	58.6	36.3	58.8	52.9	35.2	52.9	49.6	34.6	49.4
2023-Oct-25	4	58.4	33.6	58.6	58.4	35.1	58.7	53.9	31.1	54	48	0	48
2023-Oct-26	5	58.1	45.5	58	57.9	40.2	58.1	54.9	47.5	54.1	47.3	23.9	47.3
2023-Oct-27	9	58.3	43.7	58.3	58.1	42.8	58.3	55.7	44.2	55.4	46.8	0	46.7
2023-Oct-28	3	56.3	30.9	56.2	55.4	34.1	55.4	52.9	0	52.9	46.5	0	46.1
2023-Oct-29	15	58	53.3	56.1	53.9	38.6	53.8	56.4	51.3	54.7	49.2	46.3	46.1
2023-Oct-30	9	57.3	38.7	57.3	56.2	34.3	56.3	52.8	37.6	52.6	48.4	29.6	48.3
2023-Oct-31	20	58.3	51.8	57.3	57	45.4	56.8	56.5	53.2	53.8	46.8	0	46.8

Monthly Trend - October 2023

Monitor W6: 48, Bregalnitza Str., 1 DG

Date	Airport Events	LDEN (00:00-23:59), dB			LDay (07:00-18:59), dB			LEvening (19:00-22:59), dB			LNight (23:00-06:59), dB		
		Total LDEN	Aircraft LDEN	Commun. LDEN	Total Leq	Aircraft Leq	Commun. Leq	Total Leq	Aircraft Leq	Commun. Leq	Total Leq	Aircraft Leq	Commun. Leq
2023-Oct-01	0	49.1	0	49	47	0	47	46.6	0	46.6	39.8	0	39.8
2023-Oct-02	2	62.7	35.7	62.8	65.4	0	65.5	54.3	38.5	54.2	37.7	0	37.7
2023-Oct-03	10	57.5	46.7	57.4	58.9	44.5	59.1	49.2	43.6	47.8	46.1	37.9	45.3
2023-Oct-04	3	61.2	39.4	61.5	64.1	42.4	64.3	45.3	0	45.3	38.4	0	38.4
2023-Oct-05	7	59.4	44.2	59.4	61.7	32.6	61.9	51.6	46.8	49.8	41.3	0	41.3
2023-Oct-06	0	58	0	58.3	60.7	0	61	45.8	0	45.8	38.8	0	38.8
2023-Oct-07	0	49.1	0	49.1	48.8	0	48.8	44.2	0	44.2	39.5	0	39.5
2023-Oct-08	0	49.6	0	49.6	46.5	0	46.5	46.1	0	46.1	41.5	0	41.5
2023-Oct-09	0	59.7	0	59.8	62.5	0	62.7	44.6	0	44.6	38.5	0	38.5
2023-Oct-10	0	50.7	0	50.7	51.7	0	51.7	44.6	0	44.6	39.4	0	39.4
2023-Oct-11	71	62	57.9	60.2	63.3	56.7	62.5	56.1	54.8	50.1	49.7	48.1	44.3
2023-Oct-12	0	57.2	0	57.3	59.2	0	59.4	47.2	0	47.2	43.4	0	43.4
2023-Oct-13	1	58	29.6	58.4	60.6	32.6	61	45.9	0	45.9	40.9	0	40.9
2023-Oct-14	27	55.6	53.4	51.6	49.9	47	46.6	52.7	50	49.2	48.1	46.2	43.7
2023-Oct-15	2	50.8	40.7	50.3	46.2	0	46.2	47.6	43.5	45.4	43.1	0	43.1
2023-Oct-16	8	56.6	43.4	56.6	59	40.4	59.1	49	45	46.9	38.2	0	38.2
2023-Oct-17	59	58.2	55.8	54.5	56.4	52	54.5	54.6	52.6	50.2	49.5	47.8	44.2
2023-Oct-18	39	58.7	53.1	57.4	61.2	55.5	60	50.4	47.1	47.7	38.3	0	38.3
2023-Oct-19	11	54.4	49.3	52.8	52.5	44.7	51.8	54	49.7	51.9	42.1	37.9	40.1
2023-Oct-20	1	54.8	38.1	54.7	56.6	0	56.7	47.4	40.9	46.3	40.8	0	40.8
2023-Oct-21	7	54.1	51.7	50.5	45.7	0	45.7	48.6	46.2	44.7	47.8	45.8	43.7
2023-Oct-22	0	48.2	0	48.2	45.2	0	45.2	43.7	0	43.7	40.5	0	40.5
2023-Oct-23	0	55.2	0	55.3	57.5	0	57.6	47.1	0	47.1	39.2	0	39.2
2023-Oct-24	0	53.3	0	53.3	53.6	0	53.7	46.3	0	46.3	43.6	0	43.6
2023-Oct-25	0	57.6	0	57.8	60.2	0	60.4	48.2	0	48.2	38.7	0	38.7
2023-Oct-26	0	67.6	0	67.6	70.6	0	70.6	45.1	0	45.1	39.2	0	39.2
2023-Oct-27	3	52.2	41.3	51.9	53	39.2	52.9	48.1	42.5	46.8	39.7	0	39.7
2023-Oct-28	2	47.6	34.1	47.5	46.4	34.8	46.1	44.5	33.4	44.1	37.9	0	38.1
2023-Oct-29	11	53.6	51	50	46.9	0	46.9	52.4	49.9	48.6	45.3	43.6	40.4
2023-Oct-30	0	50	0	50	50.3	0	50.3	44.9	0	44.9	39.6	0	39.6
2023-Oct-31	17	54.1	50	51.9	53.1	43.1	52.6	52.2	51.4	44.3	41.7	0	41.7



Monthly Trend - October 2023

Monitor E2: Krivina, 155 School

Date	Airport Events	LDEN (00:00-23:59), dB			LDay (07:00-18:59), dB			LEvening (19:00-22:59), dB			LNight (23:00-06:59), dB		
		Total LDEN	Aircraft LDEN	Commun. LDEN	Total Leq	Aircraft Leq	Commun. Leq	Total Leq	Aircraft Leq	Commun. Leq	Total Leq	Aircraft Leq	Commun. Leq
2023-Oct-01													
2023-Oct-02													
2023-Oct-03	Технически проблем												
2023-Oct-04													
2023-Oct-05													
2023-Oct-06	11	56.9	50.8	55.7	49.5	28.6	49.5	49	0	49	50	44.7	48.6
2023-Oct-07	22	56.8	52.5	54.9	50.6	44.1	49.5	48.2	37.4	47.8	50.7	46.9	48.4
2023-Oct-08	6	54.5	37.1	54.5	51.9	38.5	51.8	48.9	0	48.9	47	26.7	46.9
2023-Oct-09	10	55.1	47.4	54.4	50	27.7	50	48.7	36.1	48.6	48.5	42	47.4
2023-Oct-10	19	56.3	50.7	54.9	51.5	41.5	51.1	51.3	39.6	51	49.3	45.1	47.2
2023-Oct-11	54	56.6	52.8	54.2	53	49	51	51.1	47	49	49.3	45.8	46.7
2023-Oct-12	19	55.2	50.4	53.5	49.3	42.3	48.5	49.3	41.7	48.5	48.6	44.4	46.6
2023-Oct-13	15	55.1	48.4	54.2	49.8	41.5	49.2	46.5	0	46.5	48.8	42.7	47.7
2023-Oct-14	42	55.4	50.7	53.7	51.9	48.2	49.7	51	47.9	48.2	47.9	42	46.6
2023-Oct-15	7	57.2	36.6	57.2	51.2	39.2	50.9	50	29.3	50	50.9	0	50.9
2023-Oct-16	16	55.5	48.9	54.5	51.1	37.3	51	49.7	44.9	48.1	48.5	42.5	47.4
2023-Oct-17	52	56	51.7	54.1	53.2	48.1	51.8	51	47.5	48.5	48.4	44.2	46.4
2023-Oct-18	49	56.2	51.7	54.4	52.5	47.7	51	50.8	48.2	47.3	49	43.9	47.5
2023-Oct-19	26	56.3	52.6	54.1	50.8	41.6	50.3	51.6	47.5	49.6	49.5	46.4	46.6
2023-Oct-20	28	58.2	50.3	57.5	59.4	47.8	59.2	49.7	44.7	48.1	47.2	42.7	45.4
2023-Oct-21	21	54.5	50.1	52.6	49.6	37.5	49.3	47.8	38.2	47.3	47.9	44.6	45.3
2023-Oct-22	17	57.1	53.7	54.4	48.3	36.1	48.1	50.5	41.3	50	51	48.3	47.6
2023-Oct-23	15	55.5	48.4	54.6	50.6	42	50	49.6	33.9	49.5	48.7	42.6	47.6
2023-Oct-24	17	55.2	47.8	54.4	50.7	44.4	49.6	49.2	37.9	48.9	48.4	41.1	47.6
2023-Oct-25	11	55	46.7	54.4	51.8	39.9	51.5	49.5	0	49.5	47.7	41	46.7
2023-Oct-26	14	55.5	48.3	54.7	50.6	39.6	50.2	49	39.1	48.6	48.9	42.4	47.9
2023-Oct-27	19	54.9	48.1	54	49.7	42.2	48.8	49.3	36.6	49.2	48.2	42.1	47
2023-Oct-28	15	55	48	54.1	50.1	40.8	49.6	48.4	0	48.4	48	42	46.9
2023-Oct-29	29	56	51.2	54.4	49.7	42.3	48.9	49.9	44.7	48.5	49.5	45.1	47.7
2023-Oct-30	14	55.3	48.7	54.3	52.7	37.7	52.6	45.9	37	45.4	48.3	43.1	46.8
2023-Oct-31	15	53.8	46.7	52.9	52.4	46.6	51.2	49	44.8	47	46.3	0	46.3

Monthly Trend - November 2023

Monitor W1: 920m west of RWY 09

Date	Airport Events	LDEN (00:00-23:59), dB			LDay (07:00-18:59), dB			LEvening (19:00-22:59), dB			LNight (23:00-06:59), dB		
		Total LDEN	Aircraft LDEN	Commun. LDEN	Total Leq	Aircraft Leq	Commun. Leq	Total Leq	Aircraft Leq	Commun. Leq	Total Leq	Aircraft Leq	Commun. Leq
2023-Nov-01	28	60.9	56.5	59	60.5	56.9	58.1	58.1	55.9	54.3	50	0	50
2023-Nov-02	26	62.6	57.7	61.1	61.4	58.4	58.3	60.8	55.9	59.2	51.9	40	51.8
2023-Nov-03	43	64.7	61.1	61.9	64.6	60.8	61.5	61.9	58.9	59.1	53	49.1	50.8
2023-Nov-04	49	64	59.8	61.9	64	59.8	62	61.1	58.6	57.5	52.1	44.8	51.3
2023-Nov-05	44	63.2	60.2	60.2	62.1	59.6	58.6	60.5	58.5	56.2	53.2	48.4	51.5
2023-Nov-06	31	61.7	56.8	60.1	61.7	58.6	58.9	58.9	53.7	57.4	50.1	0	50.1
2023-Nov-07	25	61.2	56.3	59.5	61.6	56.8	59.8	56.8	55.3	51.7	50.1	33.8	50
2023-Nov-08	31	61.6	57	59.7	61.4	57.1	59.5	59.5	55.7	57.2	49.1	41.8	48.2
2023-Nov-09	27	61.9	57	60.2	61.8	58.4	59.1	57.9	54.2	55.6	51.5	39.2	51.3
2023-Nov-10	61	67.3	65.1	63.4	63.6	61.1	60.1	64.4	60.9	61.8	59.2	57.6	54.2
2023-Nov-11	36	62.4	58.4	60.2	62.7	59.2	60.3	60.1	57.2	56.9	49	0	49
2023-Nov-12	35	62.4	59.6	59.3	61.8	59.7	57.6	59.8	54.5	58.3	51.8	49.4	48
2023-Nov-13	35	61.8	57.9	59.6	61	58.5	57.3	59.3	56.4	56.1	51.2	39.5	51
2023-Nov-14	31	61	54	60.1	61	56.6	59.1	55.6	45.1	55.2	51.2	32.6	51.2
2023-Nov-15	46	64.1	62.3	59.6	61.8	58.3	59.3	59.2	56.9	55.2	56.2	55.2	49.7
2023-Nov-16	36	61.6	56.2	60.2	61	55.7	59.5	60.6	56.4	58.6	48.2	0	48.3
2023-Nov-17	45	64.7	61.3	61.6	62.8	58.9	60.7	61.5	59.3	57.4	55.8	52	52.4
2023-Nov-18	24	65.7	57.6	64.9	63.4	51.2	62.7	61.5	55.9	60.4	57.5	49.6	56.8
2023-Nov-19	44	61.4	58	58.9	61.5	58.8	58.3	58.8	56.8	54.5	49.4	0	49.4
2023-Nov-20	28	61.1	55.4	59.8	59.3	56.7	56	58.9	52.9	57.8	51.2	34.9	51.2
2023-Nov-21	30	61.5	56.5	59.9	62	57.9	59.9	58.9	54	57.1	48.2	33.3	48.1
2023-Nov-22	34	60.6	57.2	58	60.7	58.4	56.8	59.1	55.6	56.4	47	0	47
2023-Nov-23	39	64.2	62	60.3	60.8	57.9	57.8	58.8	57.8	51.9	56.9	54.5	53.2
2023-Nov-24	60	67.4	65.2	63.3	62.8	60.4	59.1	61.1	59.6	55.7	60.5	58.3	56.6
2023-Nov-25	44	63.2	61.2	59	61.4	59.1	57.7	58.1	56	54.2	55	53.2	50.5
2023-Nov-26	53	65.2	59.3	64	58.8	54.8	56.5	58	56.5	52.8	58.8	51.4	58.1
2023-Nov-27	52	63.1	59.7	60.5	59.8	56.7	57	58.8	50.8	58.1	55.4	52.8	52
2023-Nov-28	38	63.8	61.3	60.2	62	57.4	60.3	58.1	54.7	55.5	55.7	54.4	50.1
2023-Nov-29	43	63.2	59.4	60.9	61	58.8	57	58.8	55.5	56.2	55.3	49.5	54
2023-Nov-30	36	63.4	60	60.7	61.5	59.3	57.6	62.6	58.2	60.7	50.4	47	47.1

Monthly Trend - November 2023

Monitor W2: 18, Gr. Tzambлак Str., 106 School

Date	Airport Events	LDEN (00:00-23:59), dB			LDay (07:00-18:59), dB			LEvening (19:00-22:59), dB			LNight (23:00-06:59), dB		
		Total LDEN	Aircraft LDEN	Commun. LDEN	Total Leq	Aircraft Leq	Commun. Leq	Total Leq	Aircraft Leq	Commun. Leq	Total Leq	Aircraft Leq	Commun. Leq
2023-Nov-01	25	61.5	56.9	59.8	61.3	57	59.3	59.4	56.6	56.3	49.5	0	49.5
2023-Nov-02	23	63.2	57.8	61.9	62.3	58.9	59.7	61.7	56.1	60.3	51.6	24.8	51.7
2023-Nov-03	40	63.6	58.8	61.6	62	57.5	59.4	60.7	57.5	57.9	54.1	47.5	53.2
2023-Nov-04	45	64.2	59.7	62.5	63.6	59.6	61.5	61.4	58.5	58.2	53.7	44.6	53.3
2023-Nov-05	40	63.3	60.1	60.5	62.4	59.4	59.4	60.5	58.2	56.7	53.1	48.6	51.3
2023-Nov-06	30	62.3	56.7	61	62	58.2	59.7	59.8	54.2	58.4	50.8	0	50.9
2023-Nov-07	25	62.6	57.5	61.1	62.2	58.2	59.9	60	56.2	57.8	51.3	31.8	51.5
2023-Nov-08	26	62.7	57.6	61.2	62.2	57.8	60.3	60.8	56.2	58.9	51	42.5	50.4
2023-Nov-09	27	62	56.7	60.6	61.6	58	59.3	58.4	54.7	56.1	51.7	0	51.9
2023-Nov-10	61	64.5	61.8	61.2	61.7	58.3	59.2	61.6	58.3	58.9	55.9	53.8	51.8
2023-Nov-11	35	61.8	57	60.1	61.6	57.4	59.6	60.2	56.8	57.6	49.3	0	49.4
2023-Nov-12	35	63.4	60.2	60.7	62.8	60.2	59.5	61.1	55.3	59.7	52.3	50.1	48.4
2023-Nov-13	34	62.4	58.6	60.1	61.6	58.9	58.3	60.5	58	57	51	0	51.1
2023-Nov-14	25	61.5	54.3	60.7	61.4	57	59.5	58.2	45.4	58.1	50.6	29.7	50.7
2023-Nov-15	44	64.9	62.5	61.2	62.1	58.3	59.9	60.9	57.7	58.3	56.8	55.3	51.5
2023-Nov-16	36	62.3	56.7	61.1	61	55.9	59.5	61.8	57.1	60.1	49.4	0	49.5
2023-Nov-17	46	65.4	61.5	63	61.3	56.7	59.5	61.3	59.2	57.4	58	53.5	55.8
2023-Nov-18	22	65.9	59.1	64.8	64.6	52.1	63.8	61.5	57.4	59.6	57.1	51.2	56
2023-Nov-19	44	63.1	58.5	61.4	62.7	59.5	60.1	59.9	57	56.9	52.6	0	52.6
2023-Nov-20	25	61.7	55.9	60.5	60.5	56.9	58.2	60.4	54.5	59.2	50.3	0	50.3
2023-Nov-21	33	63.1	58.1	61.6	63.3	59.5	61.1	60.1	55.6	58.2	51.3	0	51.3
2023-Nov-22	35	62.4	58.4	60.2	62.2	59.3	59.1	60.6	57.1	58.1	49.5	0	49.6
2023-Nov-23	39	65.3	62.5	62.2	61.2	57	59.3	60.3	58.7	55.3	58.1	55.3	54.9
2023-Nov-24	59	67.2	64.9	63.5	63.1	60.4	59.9	61.8	60.1	57.2	60.1	57.8	56.4
2023-Nov-25	44	64.6	61.9	61.5	62.6	60.2	58.8	59.4	56.6	56.3	56.5	53.6	53.8
2023-Nov-26	58	64.4	60.1	62.5	61.4	55.8	60.2	59.5	57.4	55.4	56.7	52.2	55.1
2023-Nov-27	48	63.2	57.9	61.7	60.5	56.1	58.8	59.8	51.2	59.3	54.8	50.2	53
2023-Nov-28	39	64	61.4	60.8	61.1	56.1	59.7	57.8	52.7	56.4	56.7	55.1	51.7
2023-Nov-29	44	64.3	60.2	62.2	62.6	59.8	59.5	60.2	56.7	57.6	55.7	49.7	54.4
2023-Nov-30	37	64.9	61	62.6	63	60.3	59.8	63.8	59.1	62.2	53.1	48.1	50.6

Monthly Trend - November 2023

Monitor

W3: 51 Plakalnica Str. City Hall

AIRPORT

Date	Airport Events	LDEN (00:00-23:59), dB			LDay (07:00-18:59), dB			LEvening (19:00-22:59), dB			LNight (23:00-06:59), dB		
		Total LDEN	Aircraft LDEN	Commun. LDEN	Total Leq	Aircraft Leq	Commun. Leq	Total Leq	Aircraft Leq	Commun. Leq	Total Leq	Aircraft Leq	Commun. Leq
2023-Nov-01	27	61	54.8	59.9	60.2	55.2	58.7	58.2	54.2	56.1	50.8	0	50.8
2023-Nov-02	25	61.9	55.5	60.9	61.1	55.4	59.8	59.8	55.3	58.2	50.8	0	50.8
2023-Nov-03	42	62.6	57.1	61.1	61	54.9	59.6	58.9	55.4	56.7	53.6	47.4	52.5
2023-Nov-04	47	62.3	57.4	60.8	61.8	56.4	60.6	59.6	56.7	56.6	51.4	43.7	50.7
2023-Nov-05	38	61.7	57.1	59.9	60.2	56.6	57.8	58.4	55.7	55.2	52.4	44.5	51.7
2023-Nov-06	31	61.8	55	60.9	61	56.1	59.5	58.6	53.4	57.2	51.8	20.8	51.8
2023-Nov-07	23	61.6	54.5	60.9	61.4	55.5	60.7	57.3	53.1	55.3	51.4	0	51.5
2023-Nov-08	25	62.2	54.7	61.6	61.6	54.6	61.1	59.2	54.2	57.7	51.8	36.2	51.7
2023-Nov-09	26	62.4	53.8	61.8	60.7	55.5	59.3	57.5	50.8	56.6	54	0	54.1
2023-Nov-10	66	63.5	59.7	61.3	61	56.3	59.7	60.4	56.3	58.3	54.8	51.7	52
2023-Nov-11	38	61.5	55.4	60.4	60.2	55.1	58.8	59	55.4	56.5	51.6	0	51.6
2023-Nov-12	36	62.4	57.8	60.7	60.9	57.8	58.3	59.8	53.3	58.8	52.8	47.7	51.2
2023-Nov-13	31	62.3	55.4	61.4	60.9	56.4	59.2	59	53.9	57.4	53.1	0	53.2
2023-Nov-14	28	61.3	51.9	60.8	60.6	54.6	59.5	57	44.4	56.8	51.8	29.7	51.8
2023-Nov-15	46	63.6	60.4	60.9	61.3	56.3	59.9	59	55.3	56.7	55.5	53.3	51.6
2023-Nov-16	35	62.1	54.6	61.4	60	53.8	59	60.5	55	59.1	52	0	52.1
2023-Nov-17	49	64.3	59.9	62.5	61.5	55.3	60.8	61	58.3	58.4	56	51.3	53.9
2023-Nov-18	22	63.6	57.7	62.3	62.2	50.1	61.6	60	56.3	57.8	54.5	49.8	52.8
2023-Nov-19	45	62.3	56.2	61.2	60.2	56.8	57.8	58.6	55.4	55.9	53.8	0	53.8
2023-Nov-20	27	61.8	53.8	61.1	59.9	54.7	58.5	59	52.4	58	52.5	0	52.5
2023-Nov-21	31	61.8	55.8	60.7	61.9	57.4	60.2	58.2	53	56.7	50.9	0	51
2023-Nov-22	32	61.8	55.9	60.6	61	56.7	59.1	58.7	54.6	56.6	51.6	0	51.7
2023-Nov-23	42	63.5	60.9	60.3	60.4	54.7	59.2	58	55	55.1	56.2	54.3	51.7
2023-Nov-24	58	65.1	62.2	62.2	61.8	57.7	59.9	60	57.8	56.2	57.7	55	54.6
2023-Nov-25	44	63.1	60	60.4	61.7	58.1	59.3	58.7	54.9	56.5	54.5	51.8	51.1
2023-Nov-26	45	61.6	55.6	60.5	58.9	53.2	57.6	58	55.6	54.6	54.1	40.8	54.1
2023-Nov-27													
2023-Nov-28													
2023-Nov-29													
2023-Nov-30													

Технически проблем

Monthly Trend - November 2023

Monitor W4: 1, Han Sevar Str., 74 DG

AIRPORT

Date	Airport Events	LDEN (00:00-23:59), dB			LDay (07:00-18:59), dB			LEvening (19:00-22:59), dB			LNight (23:00-06:59), dB		
		Total LDEN	Aircraft LDEN	Commun. LDEN	Total Leq	Aircraft Leq	Commun. Leq	Total Leq	Aircraft Leq	Commun. Leq	Total Leq	Aircraft Leq	Commun. Leq
2023-Nov-01	27	58.4	51.7	57.4	57.9	52.1	56.7	55.4	51	53.5	47.8	0	47.8
2023-Nov-02	21	60.1	52.9	59.2	60.1	52.1	59.4	57.4	53.3	55.5	48.2	0	48.2
2023-Nov-03	41	63.9	59.9	61.5	63.7	58.5	61.6	59.8	57.4	56.3	53.8	50.1	51.4
2023-Nov-04	46	62.2	56.1	61.1	61.4	56.4	59.9	57.8	54.4	55.3	53	41.6	52.6
2023-Nov-05	32	59.6	54.1	58.2	58.6	54.5	56.6	56.1	50.8	54.7	50	42	49.3
2023-Nov-06	28	60.5	52.6	59.8	58.6	53.7	56.9	56.4	51	55	52.1	0	52.1
2023-Nov-07	22	62	52.1	61.6	60.7	53	60.1	61.5	50.7	61.1	48.9	0	48.9
2023-Nov-08	24	62.1	52.6	61.7	60.8	52.8	60.2	58.3	51.7	57.4	53.1	34.3	53.1
2023-Nov-09	23	61.7	53.6	61.1	61.2	54.3	60.4	57.8	52.5	56.4	51.7	0	51.7
2023-Nov-10	66	65.7	63.6	61.8	62.8	59.8	60.1	62.8	59.8	59.7	57.3	55.9	51.6
2023-Nov-11	31	61.3	55.5	60	60.5	56.7	58.3	57.7	53.5	55.6	51.5	0	51.5
2023-Nov-12	35	60.4	55.4	58.8	58.4	55.1	55.8	57.9	51.3	56.8	51	45.3	49.7
2023-Nov-13	29	61.1	53.3	60.6	60.8	54.3	60.2	57.2	51.7	55.8	51	0	51
2023-Nov-14	28	60.9	49.9	60.7	60.6	52.4	60.2	54.8	41.8	54.6	51.7	27.7	51.7
2023-Nov-15	45	62.6	58.6	60.5	60.1	54.7	58.7	57.1	53	55.1	54.9	51.5	52.4
2023-Nov-16	32	60.8	52.4	60.2	60.1	51.5	59.6	58.2	52.8	56.9	49.9	0	49.9
2023-Nov-17	47	65.7	59.8	64.6	62.4	58.1	60.5	61	58.3	57.9	58.1	49.1	57.8
2023-Nov-18	20	64.9	54.6	64.3	64.8	48	64.2	60.8	54.6	59.6	54.6	45	54.2
2023-Nov-19	40	59.6	53.8	58.3	58.8	54.3	57	56	53	53	49.9	0	49.9
2023-Nov-20	25	60.3	51.4	59.8	59.3	52.2	58.5	57.1	50.2	56.2	50.6	0	50.6
2023-Nov-21	28	61	53.5	60.3	61.2	55	60.3	56.6	50.9	55.4	50.3	0	50.3
2023-Nov-22	30	59.9	54.1	58.6	59.6	54.4	58.1	56.6	53.4	53.9	49.1	0	49.1
2023-Nov-23	42	62.3	58.9	59.7	61.5	56.3	60.2	55.1	51.7	52.6	53.8	51.6	49.8
2023-Nov-24	54	64.7	61.9	61.5	60.1	55.4	58.3	58.4	56.1	54.6	57.9	55.4	54.4
2023-Nov-25	43	62.3	58.3	60.3	60.6	55.8	59	57.9	53.6	56.1	53.8	50.3	51.4
2023-Nov-26	45	64.2	56.2	63.9	59.9	51.8	59.2	58.7	54.2	57.1	57.2	47.8	57.2
2023-Nov-27	39	62.2	57.8	60.4	59.5	52.4	58.6	57.9	52.2	56.7	54.3	51	51.7
2023-Nov-28	43	62.6	58.3	60.7	61.9	57.7	59.9	57.9	52.4	56.6	53.4	49.4	51.3
2023-Nov-29	42	63.5	54.8	63.7	60.5	54.8	59.3	58.1	51.8	57.1	56	43.1	57
2023-Nov-30	33	62	56.1	60.6	60.3	53.6	59.3	59.5	54.6	57.8	52.8	46.4	50.8

Monthly Trend - November 2023

Monitor W5: 2, Prof. N. Raynov Str., Art School

AIRPORT

Date	Airport Events	LDEN (00:00-23:59), dB			LDay (07:00-18:59), dB			LEvening (19:00-22:59), dB			LNight (23:00-06:59), dB		
		Total LDEN	Aircraft LDEN	Commun. LDEN	Total Leq	Aircraft Leq	Commun. Leq	Total Leq	Aircraft Leq	Commun. Leq	Total Leq	Aircraft Leq	Commun. Leq
2023-Nov-01	7	56.6	37	56.6	56.6	40	56.6	53.1	0	53.1	45.6	0	45.6
2023-Nov-02	3	57.7	35	57.8	58	35.4	58.2	54.4	34.3	54.4	45.8	0	45.8
2023-Nov-03	51	62	55.2	61	60.4	55.2	58.6	57.9	52.1	56.9	53.2	44.1	52.8
2023-Nov-04	16	57.8	47.3	57.7	58.2	50.1	58	53.1	32.9	53	47	24.9	46.9
2023-Nov-05	4	59.2	44.2	59.1	58.6	47.2	58.3	52.1	0	52.1	50.7	0	50.8
2023-Nov-06	6	56.8	33.3	56.9	57.2	36.3	57.3	53.7	0	53.7	44.8	0	44.7
2023-Nov-07	5	57.1	34.5	57.2	57.5	36.8	57.7	53	28.6	53.1	45.9	0	45.9
2023-Nov-08	9	58.7	40.1	59	59.5	42.4	59.9	55	34.6	55.1	46.1	0	46.1
2023-Nov-09	15	58.3	46.2	58.2	58.3	45.7	58.3	55.4	46.4	54.9	46.7	0	46.7
2023-Nov-10	69	62.2	59.3	59.2	60.7	57.4	58.2	58.2	55.8	54.6	53.4	50.6	50.2
2023-Nov-11	22	57.6	48.9	57	58.4	51.8	57.4	52.4	36.9	52.3	46.1	0	46
2023-Nov-12	9	56	38.7	55.9	54.5	37.8	54.5	53.3	0	53.3	46.3	31.3	46.1
2023-Nov-13	12	57.5	38.7	57.7	58	41.3	58.2	54.2	31.5	54.2	45.4	0	45.4
2023-Nov-14	2	58	29.9	58.1	58.1	32.9	58.4	54.8	0	54.9	46.3	0	46.3
2023-Nov-15	11	58.3	46	58.3	58.7	46.8	58.8	54.7	42.6	54.5	46.6	32.9	46.4
2023-Nov-16	5	58	37	58.1	58.4	37.2	58.6	54.1	36.7	54.1	46.3	0	46.3
2023-Nov-17	44	61.4	54.2	60.9	61.7	55.4	61.1	58.8	52.2	58	48.5	25.8	48.5
2023-Nov-18	3	57.9	35.2	57.8	58.2	32	58.1	53.7	36.8	53.5	46.8	0	46.7
2023-Nov-19	5	55.6	34.3	55.6	54	36	53.9	53.4	31.2	53.4	45.6	0	45.6
2023-Nov-20	2	58.4	30.4	58.5	58.6	33.4	58.7	53.1	0	53.1	48.3	0	48.4
2023-Nov-21	9	57.5	35.2	57.6	57.5	38.2	57.7	54.7	0	54.8	45.6	0	45.6
2023-Nov-22	11	58.4	37.7	58.5	58.3	39.6	58.5	53.7	33.7	53.7	48.4	0	48.4
2023-Nov-23	22	59.1	48.4	59	59.6	50.7	59.4	53.3	28.4	53.4	48.8	34.8	48.6
2023-Nov-24	29	61.6	55.9	60.6	58.4	45.6	58.5	55.8	50.4	54.3	54.4	49.7	53
2023-Nov-25	9	60.2	41.3	60.4	60.3	39.2	60.7	54.6	34.8	54.6	50.2	33.7	50.1
2023-Nov-26	5	58.7	40.4	58.7	56.1	41.1	56.1	50.9	34.5	50.8	51.6	29.7	51.5
2023-Nov-27	18	58.9	53	57.7	57.9	45.3	57.9	54.9	47.4	54.1	49.5	46.6	46.4
2023-Nov-28	46	60.5	52.2	60	59.8	53.9	58.8	56.5	48.2	56	50.9	34.5	50.8
2023-Nov-29	7	60.4	38.1	60.6	61.9	38.1	62.2	54.6	37.6	54.6	46.8	0	46.7
2023-Nov-30	7	58.5	42.9	58.4	58.6	35.1	58.9	54.4	43.7	54.1	47.1	31.8	45.8

Monthly Trend - November 2023

Monitor W6: 48, Bregalnitza Str., 1 DG

AIRPORT

Date	Airport Events	LDEN (00:00-23:59), dB			LDay (07:00-18:59), dB			LEvening (19:00-22:59), dB			LNight (23:00-06:59), dB		
		Total LDEN	Aircraft LDEN	Commun. LDEN	Total Leq	Aircraft Leq	Commun. Leq	Total Leq	Aircraft Leq	Commun. Leq	Total Leq	Aircraft Leq	Commun. Leq
2023-Nov-01	1	50.4	31.3	50.3	50.5	34.3	50.4	46.5	0	46.5	39.4	0	39.4
2023-Nov-02	0	50.6	0	50.6	51	0	51	44.8	0	44.8	40.3	0	40.3
2023-Nov-03	48	58.7	53.3	57	56.1	52.8	52.6	54	50.7	51.3	50.7	42.5	50.1
2023-Nov-04	10	52.8	44.4	52.2	53	47.4	51.6	45.8	0	45.8	43.4	0	43.4
2023-Nov-05	2	53.2	43.9	52.6	51.5	46.9	49.6	45.9	0	45.9	45.5	0	45.5
2023-Nov-06	0	55.3	0	55.4	57.2	0	57.5	45.4	0	45.4	42	0	42
2023-Nov-07	0	57.4	0	57.7	60	0	60.3	44.6	0	44.6	39.4	0	39.4
2023-Nov-08	1	52.3	29.3	52.3	53.1	32.3	53.1	48.2	0	48.2	39.9	0	39.9
2023-Nov-09	9	57.4	44.2	57.3	59.6	43.7	59.6	48.8	44.5	46.8	41.9	0	41.9
2023-Nov-10	66	58.8	56.8	54.4	56.7	53	54.4	55.6	54.3	49.8	50	48.6	44.2
2023-Nov-11	18	52.5	47.1	51	53.3	50.1	50.5	46.8	0	46.8	41.3	0	41.3
2023-Nov-12	1	50.6	29.6	50.6	50.9	32.6	50.9	45.8	0	45.8	40.2	0	40.2
2023-Nov-13	1	54.4	32.5	54.5	56.5	35.5	56.7	46.1	0	46.1	39.4	0	39.4
2023-Nov-14	0	55	0	55	56.9	0	57	46.7	0	46.7	41	0	41
2023-Nov-15	2	54.5	41.6	54.4	56.3	44.6	56.1	45.7	0	45.7	41.7	0	41.7
2023-Nov-16	0	50.5	0	50.5	51.3	0	51.3	45.4	0	45.4	39.1	0	39.1
2023-Nov-17	38	55.8	51.1	54.1	56.3	51.9	54.5	53	49.8	50.1	42.5	0	42.5
2023-Nov-18	0	50.9	0	50.9	50.3	0	50.3	46.8	0	46.8	41.4	0	41.4
2023-Nov-19	0	48.8	0	48.8	46.4	0	46.4	44.8	0	44.8	40.5	0	40.5
2023-Nov-20	0	50.5	0	50.5	50.3	0	50.3	45.7	0	45.7	40.8	0	40.8
2023-Nov-21	0	50.8	0	50.8	51.4	0	51.5	45.3	0	45.3	40	0	40
2023-Nov-22	0	52	0	52	52.2	0	52.2	45.8	0	45.7	42.2	0	42.2
2023-Nov-23	15	52.2	45.1	51.3	53.9	48.1	52.7	44.2	0	44.2	39.5	0	39.5
2023-Nov-24	14	58.2	54.6	55.7	54.7	42.1	54.6	50	47.7	46.2	51.3	48.7	47.9
2023-Nov-25	0	50.2	0	50.2	50.1	0	50.1	45.2	0	45.2	40.4	0	40.4
2023-Nov-26	0	54.4	0	54.6	43.1	0	43.1	40.5	0	40.5	48.9	0	49.1
2023-Nov-27	16	53.8	51.1	50.4	50.3	42.6	49.5	48.3	45.1	45.4	46.6	44.9	41.5
2023-Nov-28	41	56	50.5	54.6	55.2	52.2	52.1	51.5	47.4	49.2	46.9	0	46.9
2023-Nov-29	0	51.7	0	51.7	51.4	0	51.4	46.9	0	46.8	41.9	0	41.9
2023-Nov-30	1	55	39.2	54.8	56.2	0	56.3	47.8	41.4	46.7	42.3	0	41.4

Monthly Trend - November 2023

Monitor E1: 960m east of RWY 27

Date	Airport Events	LDEN (00:00-23:59), dB			LDay (07:00-18:59), dB			LEvening (19:00-22:59), dB			LNight (23:00-06:59), dB		
		Total LDEN	Aircraft LDEN	Commun. LDEN	Total Leq	Aircraft Leq	Commun. Leq	Total Leq	Aircraft Leq	Commun. Leq	Total Leq	Aircraft Leq	Commun. Leq
2023-Nov-01	53	73.1	67	72	71.1	63.9	70.3	66.8	58.5	66.1	65.4	60	63.9
2023-Nov-02	52	73	66	72.1	71.3	61.5	71	67.3	59.4	66.6	64.9	59.2	63.6
2023-Nov-03	62	73.5	67.2	72.3	70.6	58.4	70.4	68.9	63.9	67.2	65.7	60.4	64.2
2023-Nov-04	43	72.7	67	71.5	70.2	61.4	69.6	68.2	63.5	66.4	64.8	59.7	63.3
2023-Nov-05	59	74.2	68.7	72.9	69.2	62.1	68.4	69.5	65.8	67.2	67.2	61.5	65.9
2023-Nov-06	67	73.7	67.8	72.6	71.5	62.7	71.1	67.7	62.3	66.2	66.1	61	64.5
2023-Nov-07	65	72.8	66	71.9	71	61	70.6	67.5	60.9	66.4	64.8	59	63.5
2023-Nov-08	76	74.6	70.6	72.5	71.8	64.6	71.1	68.4	63.2	66.9	67.3	64.3	64.2
2023-Nov-09	60	72.7	65.7	71.8	71	62.3	70.4	67	60.6	66	64.5	58.3	63.5
2023-Nov-10	62	72.3	64.2	71.7	71	61	70.7	67.2	57.4	66.8	63.8	57.2	62.8
2023-Nov-11	44	72.2	66.9	70.7	69.6	60.1	69.1	66.9	62.7	64.8	64.6	60	62.7
2023-Nov-12	58	73.6	68.7	71.9	69.4	61.4	68.7	68.7	61.9	67.8	66.3	62.5	64.1
2023-Nov-13	55	73.2	67.3	72	71	62.4	70.5	67.1	58.1	66.5	65.6	61	63.7
2023-Nov-14	70	73.4	68.1	72	71.2	62.9	70.6	68	63.1	66.3	65.7	61.2	63.8
2023-Nov-15	62	73.4	68.6	71.8	71.6	64.2	71	67.9	64.2	65.5	65.3	61.4	63.2
2023-Nov-16	63	73.4	67.8	72.1	70.8	63.2	70	68.3	64.2	66.1	65.7	60.3	64.3
2023-Nov-17	62	73.3	66.6	72.4	71.5	62.3	71.2	69.4	62.3	68.5	64.6	59.4	63.2
2023-Nov-18	17	71.7	65.1	70.4	69.8	56.4	69.5	67.7	62.3	65.1	63.2	58	61.7
2023-Nov-19	62	73.2	68	71.8	68.9	62.3	67.9	68.4	63.4	66.8	66.1	61.1	64.5
2023-Nov-20	49	73.1	66.8	72	70.8	62	70.3	67	60.1	66	65.5	60.2	64
2023-Nov-21	80	72.8	67.2	71.5	71.3	63.5	70.6	67	60.4	65.9	64.6	60.3	62.7
2023-Nov-22	57	73.3	66	72.5	71.1	62.2	70.5	67.8	60.3	67	65.4	58.9	64.5
2023-Nov-23	50	72.6	65.5	71.8	71.4	61.3	71.3	67.6	60	66.8	64	58.4	62.6
2023-Nov-24	56	72.8	66	71.8	71.5	63.6	70.9	68.6	63.3	67.2	63.8	57.2	62.7
2023-Nov-25	42	70.7	66	69	70	63.5	69	66.8	62.7	64.7	61	57.5	58.5
2023-Nov-26	37	71.3	66.8	69.3	66.7	60.3	65.4	67.1	62.5	65.3	64	59.9	61.8
2023-Nov-27	46	71.1	63.8	70.2	69.1	59.4	68.6	65.7	57.9	65	63.1	57	61.9
2023-Nov-28	39	72.6	63.9	72.1	69.9	56.2	69.8	67.9	63.2	66.2	64.8	55.4	64.4
2023-Nov-29	45	73	67.7	71.6	71	63.1	70.3	67.2	61.9	65.8	65.2	60.8	63.3
2023-Nov-30	54	72	64.5	70.9	71	63.2	70.3	67.7	61.2	66.6	63.3	55.4	61.5

Monthly Trend - November 2023

Monitor E2: Krivina, 155 School

AIRPORT

Date	Airport Events	LDEN (00:00-23:59), dB			LDay (07:00-18:59), dB			LEvening (19:00-22:59), dB			LNight (23:00-06:59), dB		
		Total LDEN	Aircraft LDEN	Commun. LDEN	Total Leq	Aircraft Leq	Commun. Leq	Total Leq	Aircraft Leq	Commun. Leq	Total Leq	Aircraft Leq	Commun. Leq
2023-Nov-01	15	56.1	50.3	54.9	51.5	41.2	51.1	49.4	0	49.4	49.4	44.8	47.8
2023-Nov-02	18	54.8	50.8	52.6	49.9	37.9	49.6	46.5	40.1	45.4	48.3	45.3	45.5
2023-Nov-03	44	58	51.7	56.8	53.3	46.9	51.6	52.4	49	50	51.2	43.9	50.3
2023-Nov-04	11	55.6	47.8	54.9	53.3	40.4	53.1	49	0	49	48.1	42.1	46.9
2023-Nov-05	17	55.1	48.1	54.2	50.2	42.2	49.5	47.2	0	47.2	48.6	42.3	47.6
2023-Nov-06	22	56.4	51.3	54.8	51.3	39.6	51	50.8	43.7	49.9	49.6	45.5	47.6
2023-Nov-07	25	56.1	50	55	52.9	43.8	52.4	49.2	43.1	48	49.1	43.7	47.7
2023-Nov-08	17	56.8	50.6	55.6	53.7	40.6	53.6	49.9	0	50	49.6	45.2	47.8
2023-Nov-09	29	55.4	50.3	53.9	51	42.7	50.4	50.6	45.4	49.2	48.2	43.7	46.4
2023-Nov-10	51	56	52	53.9	52.8	48.4	50.9	51.3	46.7	49.6	48.5	44.7	46.2
2023-Nov-11	18	55.6	48.9	54.6	52.9	47.8	51.4	50.1	0	50.1	48	41.6	46.9
2023-Nov-12	14	56.2	50.6	54.9	50.7	35.1	50.7	48.3	39.6	47.7	49.9	45.1	48.2
2023-Nov-13	15	56.1	50	54.9	51	37.6	50.8	50.8	40.7	50.3	49.3	44.4	47.7
2023-Nov-14	21	56.9	49.4	56.2	50.4	39.9	50.1	51.1	42.5	50.5	50.4	43.4	49.6
2023-Nov-15	7	56.4	39.9	56.3	52.9	37.7	52.8	54.4	40	54.3	47.6	27	47.5
2023-Nov-16	16	63.1	56.8	61.9	55.3	40.8	55.2	64.8	58.4	63.6	49.1	45.2	46.9
2023-Nov-17	37	57.5	47.6	57.1	53.7	48.9	52.1	53.4	45.4	52.7	50	0	50
2023-Nov-18	3	57.5	32.1	57.5	56.7	35.1	56.6	52.2	0	52.2	48.7	0	48.7
2023-Nov-19	10	57.3	49.1	56.7	56.1	0	56.1	50.3	39.5	49.9	49.3	43.7	48
2023-Nov-20	15	55.7	50.1	54.3	52.4	41.2	52.1	49.9	38.3	49.6	48.4	44.4	46.3
2023-Nov-21	16	55.4	50.3	54	50.4	41.4	49.9	48.1	36.3	47.8	48.9	44.6	47.1
2023-Nov-22	19	56.2	50.6	54.9	52.1	39.4	51.9	48.5	41.7	47.6	49.5	44.9	47.8
2023-Nov-23	21	53.8	46.6	52.9	50.8	44.3	49.8	47.4	35.4	47.1	46.5	39.7	45.6
2023-Nov-24	12	55.6	44.9	55.3	50.2	41.9	49.6	51.6	40.9	51.3	48.5	36.9	48.2
2023-Nov-25	0	52.5	0	52.5	52	0	52.1	46.6	0	46.6	43.4	0	43.4
2023-Nov-26	3	55.3	30.9	55.3	52.1	33.9	52	48.2	0	48.2	48.3	0	48.3
2023-Nov-27	16	53.9	47.1	53	51.3	38.5	51.1	48.8	42.7	47.7	46.2	40.6	44.9
2023-Nov-28	27	55.6	46.3	55	52.5	45.4	51.7	50.8	46.9	48.6	47.9	0	48
2023-Nov-29	3	53.7	40.7	53.5	52.2	30.8	52.2	48.2	0	48.2	45.5	35.3	45.1
2023-Nov-30	5	52.4	35.2	52	51.2	37.6	51	45.9	0	45.9	45	0	44.3

Monthly Trend - December 2023

Monitor W1: 920m west of RWY 09

AIRPORT

Date	Airport Events	LDEN (00:00-23:59), dB			LDay (07:00-18:59), dB			LEvening (19:00-22:59), dB			LNight (23:00-06:59), dB		
		Total LDEN	Aircraft LDEN	Commun. LDEN	Total Leq	Aircraft Leq	Commun. Leq	Total Leq	Aircraft Leq	Commun. Leq	Total Leq	Aircraft Leq	Commun. Leq
2023-Dec-01	48	63.8	60.8	60.8	62.6	59.9	59.4	59.5	57.3	55.5	54.7	51.1	52.3
2023-Dec-02	34	63	59.5	60.3	60.9	56.1	58.9	62.8	59.5	60.1	50.4	48.3	46.3
2023-Dec-03	46	65	61.4	62.7	60.3	56.7	57.8	60.3	55.8	58.5	58	54.6	55.5
2023-Dec-04	38	65.8	63	62.6	60.9	56.7	58.8	58.8	56.9	54.3	59.2	56.5	55.9
2023-Dec-05	47	65.1	62.9	60.9	63.1	60.5	59.5	62.1	60	58	56	54.1	51.4
2023-Dec-06	34	63.2	59.2	61	63.4	60.8	60.2	61.5	56.5	59.8	48.6	0	48.6
2023-Dec-07	49	63.3	61.8	57.8	60.7	56.3	58.7	59.5	58.6	52.6	55.1	54.5	46.2
2023-Dec-08	50	62.8	60.4	59.2	62	59.1	58.9	60.1	59.1	53.1	52.3	48.7	49.9
2023-Dec-09	33	60.9	58	57.8	61.9	59.6	58.1	57.8	55.3	54.4	45.9	0	45.9
2023-Dec-10	31	61.6	58.2	59	61.8	59	58.6	56.6	54.4	52.6	51.3	45.7	50
2023-Dec-11	35	60.7	57.6	57.9	61.1	58.7	57.5	58	55.8	54	47.8	0	47.8
2023-Dec-12	33	61.6	57.2	59.7	61.2	57.5	58.9	59.1	56.2	56.2	50.1	38.3	49.9
2023-Dec-13	46	64.5	61.9	61.1	62.3	59	59.6	62.8	60.9	58.3	54.6	51.9	51.5
2023-Dec-14	49	64.2	62.2	60.1	60.9	58	58	60.8	58.6	56.9	56.2	54.6	51.3
2023-Dec-15	45	73	60.3	72.8	63.1	60	60.3	62.4	56.8	61	67.3	49.9	67.3
2023-Dec-16	39	63	59.9	60.1	62.2	58.5	59.8	63	61.5	57.8	48.9	0	48.9
2023-Dec-17	34	61.2	56.9	59.2	60	57.1	56.9	57.4	54	54.7	52.1	44.9	51.2
2023-Dec-18	37	62.9	56.9	62	60.8	58	57.6	58	55.2	54.7	54.8	0	55.4
2023-Dec-19	48	61.6	58.2	59	61	57.6	58.4	58	56.7	52.5	51.6	45.8	50.2
2023-Dec-20	58	64	61.8	60.1	59.9	56.6	57.2	59.7	58	54.7	56.7	54.5	52.6
2023-Dec-21	51	62.2	59.7	58.6	60.7	58.4	57	60.9	59.1	56.1	51.2	47.1	49
2023-Dec-22	43	63	58.8	61	61.4	56.5	59.8	61.3	58.2	58.4	52.6	47.5	51
2023-Dec-23	43	64	61.1	60.9	61.3	57.2	59.3	61.7	59	58.3	55	52.5	51.4
2023-Dec-24	25	58.6	54.6	56.4	59.5	57.6	55.3	50.5	36.9	50.4	48	0	48.1
2023-Dec-25	12	59.3	51.5	58.6	56.9	54.1	53.6	52.6	0	52.6	51.9	35.4	51.8
2023-Dec-26	29	61.6	57.5	59.5	61.4	58.9	57.7	57	51.4	55.7	51.7	43.8	50.9
2023-Dec-27	35	63.1	58.8	61.2	61.5	57.6	59.3	59.2	55.6	56.7	54.3	49.3	52.8
2023-Dec-28	42	64.5	62.2	60.8	61.5	58.2	58.7	59.6	54.7	58	57	55.4	51.7
2023-Dec-29	53	63.3	59.2	61.5	62.2	59.7	58.8	61	58.5	57.6	53	0	53.3
2023-Dec-30	48	63.9	61	60.9	62.8	59.8	59.8	62.9	61.7	56.8	51.6	0	51.7
2023-Dec-31	25	69.9	55.9	69.8	60.8	57.7	57.9	57.3	50.7	56.4	65.1	0	65.2



Monthly Trend - December 2023

Monitor W2: 18, Gr. Tzamlak Str., 106 School

AIRPORT

Date	Airport Events	LDEN (00:00-23:59), dB			LDay (07:00-18:59), dB			LEvening (19:00-22:59), dB			LNight (23:00-06:59), dB		
		Total LDEN	Aircraft LDEN	Commun. LDEN	Total Leq	Aircraft Leq	Commun. Leq	Total Leq	Aircraft Leq	Commun. Leq	Total Leq	Aircraft Leq	Commun. Leq
2023-Dec-01	48	63.9	61.2	60.7	63.5	60.9	60.3	59.8	57.3	56.2	53.9	51	50.9
2023-Dec-02	29	62	56.9	60.3	60.9	54.7	59.6	61	56.4	59.2	49.5	45.6	47.3
2023-Dec-03	45	65.5	62.4	62.7	61.9	57.6	60	61.1	56.7	59.3	58	55.6	54.5
2023-Dec-04	40	64.9	61.6	62.2	61.6	57.2	59.8	59.3	56.2	56.6	57.6	54.6	54.5
2023-Dec-05	47	64.1	60.1	62	61.6	57.5	59.6	61.3	57.7	58.9	55.3	51	53.3
2023-Dec-06	35	62	56.6	60.7	61.9	58	59.8	59.8	54.4	58.5	49.7	0	49.7
2023-Dec-07	46	64.4	62.8	59.4	60.8	57.1	58.6	60.9	59.8	54.6	56.4	55.2	50.2
2023-Dec-08	51	64	61.3	60.7	63.4	59.9	61	61.4	60.2	55.4	53	49.8	50.3
2023-Dec-09	34	62.6	59	60.2	63.3	60.7	60	59.6	55.9	57.1	49.3	0	49.3
2023-Dec-10	31	63.2	59	61.1	63	59.6	60.4	58	55.3	54.8	53.5	46.9	52.4
2023-Dec-11	33	61.7	58.3	59.1	62.1	59.1	59.3	59.3	57	55.4	47.9	0	47.9
2023-Dec-12	33	62.4	57.6	60.7	62.1	57.8	60.2	60.3	57.1	57.6	50.2	26.5	50.3
2023-Dec-13	42	63.3	59.8	60.9	62	56.7	60.7	60.7	58.4	57	53.4	50.2	50.7
2023-Dec-14	53	65.4	63.2	61.4	62.1	59.3	59.1	62.1	59.9	58.4	57.3	55.4	52.6
2023-Dec-15	44	65.3	61.4	63.1	63.9	60.8	61	63.6	58.3	62.1	54.8	51.2	52.4
2023-Dec-16	44	64.7	59.5	63.1	62.8	58.2	61.1	62.5	60.2	58.7	54.9	0	54.9
2023-Dec-17	36	62.5	58.4	60.3	61.5	57.6	59.3	59	56	56	52.8	47.7	51.2
2023-Dec-18	35	63.6	58	62.3	62.3	58.8	59.8	59.7	56.9	56.5	54.3	0	54.6
2023-Dec-19	48	63.3	58.9	61.4	61.9	58.3	59.6	61	57.6	58.5	53.1	46.4	52
2023-Dec-20	58	65.4	62.9	61.9	62	57.6	60.1	60.7	58.7	56.6	57.8	55.7	53.8
2023-Dec-21	51	63.9	60.6	61.2	62.2	59	59.5	62.2	60.2	58	53.5	47.6	52.2
2023-Dec-22	41	64.1	59.3	62.5	62.2	57.1	60.8	61.9	58.3	59.5	54.5	48.5	53.3
2023-Dec-23	45	65.1	62	62.2	62.1	57.5	60.5	62.7	59.9	59.7	56.2	53.8	52.7
2023-Dec-24	26	60.1	54.7	58.7	60.6	57.7	57.6	52.6	38.7	52.5	50.1	0	50.3
2023-Dec-25	12	65.8	51.2	65.7	60.2	54.1	59.1	67.6	0	67.6	49.1	29.1	49.1
2023-Dec-26	29	62.8	58.8	60.6	63	59.5	60.6	57.6	51.6	56.3	52.5	48.6	50.2
2023-Dec-27	36	63.8	59.7	61.9	62.4	58	60.5	60.7	56.4	58.6	54.4	50.7	52.5
2023-Dec-28	40	65.3	63	61.5	62.8	58.9	60.7	60.6	55.7	59	57.5	56.3	51.1
2023-Dec-29	51	75.2	59.8	75.1	63.2	60	60.4	77.8	59.4	77.7	50.5	0	50.6
2023-Dec-30	51	64.3	61.4	61.2	63.2	60.1	60.2	63.7	62.2	58.4	51	25.9	51.1
2023-Dec-31	24	80.6	56.5	80.7	62.4	58.4	60.3	65.3	51.3	65.3	76.1	0	76.2

Monthly Trend - December 2023

Monitor W3: 51 Plakalnica Str. City Hall

AIRPORT

Date	Airport Events	LDEN (00:00-23:59), dB			LDay (07:00-18:59), dB			LEvening (19:00-22:59), dB			LNight (23:00-06:59), dB		
		Total LDEN	Aircraft LDEN	Commun. LDEN	Total Leq	Aircraft Leq	Commun. Leq	Total Leq	Aircraft Leq	Commun. Leq	Total Leq	Aircraft Leq	Commun. Leq
2023-Dec-01	34	63.3	59	61.4	62.1	57.8	60.4	58.8	55	56.6	53.9	49.4	52
2023-Dec-02	29	60.9	55.7	59.3	59.5	52.5	58.4	59.3	55.8	56.8	50	43.9	48.8
2023-Dec-03	47	64.4	60.9	62.2	60.5	55.6	59	59.5	55	57.7	57.1	54	54.4
2023-Dec-04	39	63.7	59.1	62.1	60.4	55	59.1	58.9	54.7	57	56.4	51.8	54.6
2023-Dec-05	50	63.7	57.8	62.6	61	55.5	59.8	59.5	55.7	57.2	55.7	48.3	54.9
2023-Dec-06	36	62.4	54.8	61.9	61.7	55.9	61	59.8	53.2	58.9	51.6	0	51.7
2023-Dec-07	52	63.4	60.3	60.7	60.3	54.4	59.3	60.3	58.1	56.4	55.2	52.5	51.9
2023-Dec-08	53	63.8	59.5	61.9	62	57.8	60	60.5	58.4	56.4	54.9	48.2	53.9
2023-Dec-09	35	62.4	56.7	61.1	61.7	58.3	59.1	58.4	53.1	57.1	52.9	0	53
2023-Dec-10	33	61.7	56.7	60.2	61	56.5	59.2	57.5	53.9	55.2	52.2	45.3	51.3
2023-Dec-11	35	62.2	55.5	61.3	60.8	56.1	59.1	58.9	54.6	57.1	53	0	53
2023-Dec-12	31	62.3	54.4	61.7	60.9	54.6	59.9	59.3	54	57.9	52.9	0	53
2023-Dec-13	40	62.8	57.4	61.5	61	54	60.2	59.2	55.6	56.9	54	48.5	52.8
2023-Dec-14	48	64.7	60.9	62.6	60.8	55.9	59.3	61.7	57.8	59.7	56.7	53.3	54.3
2023-Dec-15	46	65	59.8	63.8	63.1	58.6	61.8	62.8	57.6	61.5	55.2	49.5	54.2
2023-Dec-16	48	63	58.5	61.3	61.3	56.8	59.7	61.3	59.5	56.9	52.7	0	52.7
2023-Dec-17	39	63.1	56.7	62	60.1	55.1	58.7	59	53.2	57.8	55.1	47.8	54.4
2023-Dec-18	38	63.2	56.4	62.4	61	55.9	59.6	59.8	55.3	58	54.7	42.9	54.5
2023-Dec-19	48	62.9	56.9	61.8	61.3	56.2	60	59.2	55.3	57.3	54	45.1	53.5
2023-Dec-20	62	63.7	60.2	61.4	61.1	56.2	59.7	59.3	56.3	56.4	55.8	52.7	53
2023-Dec-21	50	63.4	58.3	62	60.7	56.4	58.9	61	57.9	58.3	54.5	45.9	54
2023-Dec-22	43	63.7	57.6	62.6	61.5	55.2	60.6	60.2	56.1	58.3	55.1	47.7	54.2
2023-Dec-23	46	63.6	59.5	61.7	60.6	54.8	59.4	61	57.2	58.8	55.1	51.3	52.9
2023-Dec-24	25	58.8	52.4	57.8	59	55.3	56.7	53.3	31.8	53.3	48.8	23.9	48.8
2023-Dec-25	12	58.5	48.2	58.1	57	51.3	55.7	53.7	0	53.7	50	0	50
2023-Dec-26	28	61.4	56.4	59.9	59.8	55.9	57.7	58.2	49.5	57.5	52.3	47.7	50.5
2023-Dec-27	34	62.4	57.4	60.8	60.8	54.9	59.6	59.2	55.1	57.1	53.1	48.4	51.4
2023-Dec-28	36	63.7	59.8	61.5	61.1	55.9	59.7	59.5	53.9	58.3	55.6	52.8	52.4
2023-Dec-29	54	62.7	58.1	60.9	61.9	58.2	59.7	60.7	57.8	57.7	51.4	0	51.4
2023-Dec-30	50	62.5	59	60	61.1	56.6	59.2	62	60.4	57.1	49.6	0	49.6
2023-Dec-31	25	76.7	54.3	76.9	60.7	55.8	59.1	64.6	49.8	64.6	72.4	0	72.6

Monthly Trend - December 2023

Monitor W4: 1, Han Sevar Str., 74 DG

AIRPORT

Date	Airport Events	LDEN (00:00-23:59), dB			LDay (07:00-18:59), dB			LEvening (19:00-22:59), dB			LNight (23:00-06:59), dB		
		Total LDEN	Aircraft LDEN	Commun. LDEN	Total Leq	Aircraft Leq	Commun. Leq	Total Leq	Aircraft Leq	Commun. Leq	Total Leq	Aircraft Leq	Commun. Leq
2023-Dec-01	43	61.4	56.3	59.9	60.6	55.4	59.2	57	52.9	55	52.1	46.7	50.7
2023-Dec-02	30	61.2	58.6	57.8	58.4	53.3	56.8	61.1	59.4	56.2	49.6	46.7	46.5
2023-Dec-03	45	63.4	58.5	61.8	59.9	53.4	59	59.1	52.9	58.1	55.8	51.8	53.8
2023-Dec-04	38	64.6	61.8	61.5	60.2	54.1	59.1	58	55.2	54.9	57.9	55.5	54.1
2023-Dec-05	52	78.1	77.9	61.3	62.8	59.3	60.4	61	58.7	57.3	72.7	72.6	52
2023-Dec-06	37	62.6	58.4	60.5	62.9	59.5	60.3	60.5	56.8	58.2	48.7	0	48.7
2023-Dec-07	46	62.3	57.9	60.4	59.7	51.9	59	59.1	55.9	56.5	53.8	50.1	51.5
2023-Dec-08	47	61.7	57.3	59.7	60.6	55.4	59.1	58	56.2	53.6	52.2	46.3	50.9
2023-Dec-09	35	61.2	53.7	60.4	59.2	55.7	56.8	55.7	49.7	54.5	53.3	0	53.3
2023-Dec-10	31	59.6	54.4	58.1	58.4	53.9	56.6	55.2	51.7	52.6	50.8	43.6	49.9
2023-Dec-11	30	60.2	53.1	59.4	60.2	53.7	59.4	56.6	52.1	54.8	49.2	0	49.2
2023-Dec-12	28	60.7	52.2	60.2	60.2	52.3	59.6	57.4	52	56	50.5	0	50.5
2023-Dec-13	40	62.9	59.7	60.3	61.5	56.5	60.1	60.6	58.7	56.4	52.8	49.8	50
2023-Dec-14	45	63.3	58.7	61.7	59.9	53.6	58.9	60.6	55.6	59.3	55	51.1	53
2023-Dec-15	42	63.7	57.4	62.7	61.9	55.8	60.9	61.3	55.1	60.3	54	47.6	53
2023-Dec-16	48	62.7	59	60.4	61.5	57.6	59.3	61.3	59.9	55.7	51.4	0	51.4
2023-Dec-17	34	60.7	54.6	59.5	57.8	52.7	56.3	56.5	50.6	55.3	52.8	46.1	51.8
2023-Dec-18	35	61.6	54.3	60.8	60.1	53.6	59.2	57.8	53.3	56	52.7	41.1	52.4
2023-Dec-19	45	62	54.9	61.2	60.5	54.4	59.6	57.1	52.8	55.2	53.6	43.2	53.1
2023-Dec-20	53	62.6	57.6	61.1	59.5	53.7	58.3	57.2	53.4	55	55.2	50	53.7
2023-Dec-21	46	61.1	55.8	59.7	58.8	54	57.2	58.7	55.3	56.1	52	43.4	51.4
2023-Dec-22	39	61.7	55.4	60.6	59.8	53	59	58.8	54.3	57	52.5	44.9	51.7
2023-Dec-23	41	62.9	57.2	61.7	59	52.7	58	62	55.4	61.1	53.3	48.7	51.5
2023-Dec-24	20	58.3	50.3	57.6	56.9	53.3	54.5	53.3	0	53.3	49.9	0	49.9
2023-Dec-25	9	58.7	44.7	58.5	54.7	47.7	53.8	54.8	0	54.8	51.1	0	51.1
2023-Dec-26	27	60.4	54.2	59.2	57.4	53.3	55.3	56.4	47.1	55.8	52.5	46	51.4
2023-Dec-27	34	60.9	55.2	59.5	58.7	52.5	57.5	57.8	52.8	56.2	52.1	46.3	50.8
2023-Dec-28	35	62	57.7	60	58.5	53.2	57	58.2	51	57.3	54.2	51	51.5
2023-Dec-29	53	62.1	56.5	60.8	60.4	56.6	58.1	60.7	56.1	59	51.5	0	51.5
2023-Dec-30	48	62	56.7	60.7	61.6	54.5	60.8	60.4	57.9	57	49.5	0	49.5
2023-Dec-31	23	81.3	52.4	81.7	60	53.9	58.9	68	48.3	68	76.8	0	77.2

Monthly Trend - December 2023

Monitor

W5: 2, Prof. N. Raynov Str., Art School

AIRPORT

Date	Airport Events	LDEN (00:00-23:59), dB			LDay (07:00-18:59), dB			LEvening (19:00-22:59), dB			LNight (23:00-06:59), dB		
		Total LDEN	Aircraft LDEN	Commun. LDEN	Total Leq	Aircraft Leq	Commun. Leq	Total Leq	Aircraft Leq	Commun. Leq	Total Leq	Aircraft Leq	Commun. Leq
2023-Dec-01	11	58.3	37.6	58.4	58	37.6	58.2	54.1	37.3	54	48.4	0	48.4
2023-Dec-02	19	58.8	53.5	57.3	57.2	47.1	56.8	57.9	54.5	55.2	47.1	42	45.4
2023-Dec-03	7	57.1	39.4	57.1	56.9	35.8	57	53.6	0	53.6	46.6	33.1	46.4
2023-Dec-04	26	60.8	56.2	59.1	58.2	45.2	58.2	54.8	50.5	52.8	53.4	50.1	50.6
2023-Dec-05	63	61.2	57.2	59.2	59.9	55.2	58.3	57.4	54	54.9	52.2	48.4	49.9
2023-Dec-06	44	60.9	54.2	60.1	60.7	55.2	59.7	57.5	52.5	56.1	50.1	0	50.1
2023-Dec-07	10	59.1	42	59.2	58.7	35.5	59.1	56.7	41.5	56.7	47.6	33	47.5
2023-Dec-08	14	58.8	41.4	58.9	58.4	39.3	58.7	54.2	39.9	54.1	49.2	31.2	49.1
2023-Dec-09	11	57.9	38.5	57.9	56.5	39.6	56.6	54.2	36.8	54.2	48.7	0	48.6
2023-Dec-10	7	56.2	34.4	56.2	55.8	35.8	55.9	53	32.1	52.9	45.4	0	45.4
2023-Dec-11	8	57.4	36.2	57.5	57.5	38.5	57.7	54.5	30.7	54.5	45.5	0	45.5
2023-Dec-12	4	57.7	37.4	57.8	57.9	34.7	58.1	54.1	38.9	54	46.2	0	46.2
2023-Dec-13	43	59.5	54.8	57.8	58.9	51.8	58.1	57.2	54.3	54.2	48.3	43.9	46.4
2023-Dec-14	10	60.5	42.7	60.6	57.4	33.4	57.6	57.5	38.2	57.9	52.1	36.3	52.1
2023-Dec-15	14	61.1	43.9	61.4	60.8	42.9	61.4	56.7	40.6	56.8	51.1	34.3	51
2023-Dec-16	33	59.5	52.3	58.8	59.8	51.1	59.6	56.6	52.9	54.2	47.2	0	47.2
2023-Dec-17	5	56.9	38.5	56.9	55.1	33.9	55.1	53.2	0	53.2	48.2	32.5	48
2023-Dec-18	8	58.7	36.5	58.9	59.3	39.1	59.6	54.3	28.7	54.4	47.2	0	47.1
2023-Dec-19	11	58.5	37.4	58.7	58.4	38.2	58.6	55.6	0	55.7	47.3	28.2	47.2
2023-Dec-20	10	58.6	38.1	58.7	58.5	38.8	58.8	54.6	0	54.7	48	29.1	48
2023-Dec-21	4	58.5	34.2	58.6	58.2	32.5	58.5	55.5	35.1	55.5	47.5	0	47.5
2023-Dec-22	13	58.3	38	58.5	58.1	40.5	58.4	54.7	31.8	54.7	47.8	0	47.8
2023-Dec-23	9	57.2	40.3	57.2	56.7	37.7	56.9	53.6	38.6	53.5	47	30.7	46.9
2023-Dec-24	8	59.8	38.3	59.8	53.9	41.3	53.7	61.4	0	61.4	44.8	0	44.8
2023-Dec-25	0	59.5	0	59.5	61.7	0	61.8	50	0	50	44.2	0	44.2
2023-Dec-26	7	55.5	42.3	55.3	53.8	34.2	53.7	51.5	44	50.6	46.9	28.9	46.8
2023-Dec-27	3	58.6	37.2	58.5	53.3	31	53.3	59.7	32.2	59.7	45.7	30.6	45.6
2023-Dec-28	9	56.4	39	56.4	55.2	36.8	55.2	54.3	34	54.3	46.1	31.1	45.9
2023-Dec-29	12	56	40.1	55.9	55.6	41.4	55.5	52.2	37.9	52.1	45.8	0	45.8
2023-Dec-30	11	55.3	40.8	55.2	53.8	40.5	53.6	52.7	40.9	52.4	45.7	0	45.6
2023-Dec-31	9	70.7	36.6	70.7	55.6	38.5	55.6	60.5	30.7	60.5	66.1	0	66.1

Monthly Trend - December 2023

Monitor W6: 48, Bregalnitza Str., 1 DG

AIRPORT

Date	Airport Events	LDEN (00:00-23:59), dB			LDay (07:00-18:59), dB			LEvening (19:00-22:59), dB			LNight (23:00-06:59), dB		
		Total LDEN	Aircraft LDEN	Commun. LDEN	Total Leq	Aircraft Leq	Commun. Leq	Total Leq	Aircraft Leq	Commun. Leq	Total Leq	Aircraft Leq	Commun. Leq
2023-Dec-01	1	58.5	41.5	58.6	60.9	0	61.1	46.3	0	46.3	43.1	36.3	42
2023-Dec-02	17	54.7	51.8	51.6	51.3	46.7	49.6	54.3	52.6	49.3	44.1	39.7	42.1
2023-Dec-03	0	50.9	0	50.9	49.1	0	49.1	45.1	0	45.1	42.9	0	42.9
2023-Dec-04	19	56.2	53.8	52.5	51.3	42.3	50.7	49.5	47.5	45.2	49.6	47.8	44.8
2023-Dec-05	63	57.1	55.2	52.5	55.7	53.2	52.2	53.7	51.9	49.1	47.8	46.5	41.8
2023-Dec-06	43	55.4	52.2	52.7	56	52.7	53.2	53.2	51.3	48.7	40.9	0	40.9
2023-Dec-07	0	51.8	0	51.8	51.1	0	51.1	47.6	0	47.6	42.2	0	42.2
2023-Dec-08	0	51.8	0	51.8	50.8	0	50.8	47.5	0	47.5	42.7	0	42.7
2023-Dec-09	2	49.8	38.3	49.5	47.9	31.2	47.8	46.3	40.7	44.9	40.9	0	40.9
2023-Dec-10	1	49.9	28.2	49.9	46.6	31.2	46.5	44.6	0	44.6	42.5	0	42.5
2023-Dec-11	0	52.8	0	52.9	53.9	0	54	45.4	0	45.4	41.9	0	41.9
2023-Dec-12	1	51.3	36	51.1	51	0	51	46.6	38.8	45.8	41.5	0	41.5
2023-Dec-13	37	57.3	52.7	55.5	57.7	49.6	57.1	54	52.7	48.1	45.1	41.1	42.9
2023-Dec-14	0	58.7	0	58.7	60.2	0	60.3	50.5	0	50.5	46.6	0	46.6
2023-Dec-15	0	54.3	0	54.3	53.3	0	53.3	50.2	0	50.2	45.2	0	45.2
2023-Dec-16	25	54.1	49.8	52	53.3	49.9	50.6	51.5	49.5	47.1	43.5	0	43.5
2023-Dec-17	1	50.5	30.9	50.5	47.7	33.9	47.5	45.1	0	45.1	43	0	43
2023-Dec-18	0	52	0	52	52.1	0	52.1	47	0	47	41.9	0	41.9
2023-Dec-19	0	51.2	0	51.2	50.8	0	50.8	47	0	47	41.5	0	41.5
2023-Dec-20	0	52.5	0	52.5	51.6	0	51.6	45.2	0	45.2	44.2	0	44.2
2023-Dec-21	0	51.8	0	51.8	51	0	51	46.1	0	46.1	43.1	0	43.1
2023-Dec-22	0	51.5	0	51.5	50.6	0	50.6	46.9	0	46.9	42.5	0	42.5
2023-Dec-23	0	50.5	0	50.5	48.9	0	48.9	46.1	0	46.1	41.9	0	41.9
2023-Dec-24	1	47.6	33.9	47.4	47	36.9	46.5	42.4	0	42.4	38.5	0	38.5
2023-Dec-25	0	49.5	0	49.5	48.1	0	48.1	45.4	0	45.4	40.5	0	40.5
2023-Dec-26	1	49.4	39.2	49	46.4	0	46.4	46.9	42	45.1	40.8	0	40.8
2023-Dec-27	0	49.5	0	49.5	46.3	0	46.3	45.2	0	45.2	41.7	0	41.7
2023-Dec-28	0	50	0	50	47.6	0	47.6	48	0	48	40.6	0	40.6
2023-Dec-29	1	50	34.3	49.8	48.3	37.3	47.9	47.3	0	47.3	40.4	0	40.4
2023-Dec-30	2	49.6	38.3	49.3	48.3	41.3	47.4	46.8	0	46.8	39.8	0	39.8
2023-Dec-31	0	74.8	0	74.9	48.9	0	48.9	64.4	0	64.4	70.3	0	70.4

Monthly Trend - December 2023

Monitor E1: 960m east of RWY 27

AIRPORT

Date	Airport Events	LDEN (00:00-23:59), dB			LDay (07:00-18:59), dB			LEvening (19:00-22:59), dB			LNight (23:00-06:59), dB		
		Total LDEN	Aircraft LDEN	Commun. LDEN	Total Leq	Aircraft Leq	Commun. Leq	Total Leq	Aircraft Leq	Commun. Leq	Total Leq	Aircraft Leq	Commun. Leq
2023-Dec-01	59	73.2	66.8	72.2	71.6	62.9	71.1	68.2	62.5	66.8	64.9	59.4	63.5
2023-Dec-02	52	71.5	65.9	70.1	69.7	61.7	68.8	65.3	58.4	64.4	63.6	59.3	61.7
2023-Dec-03	38	72.5	66.9	71.1	68.7	62.2	67.6	67.8	62.8	66.2	65.1	59.6	63.7
2023-Dec-04	33	72.1	61.4	71.7	70.8	60.4	70.4	66.7	58.3	66.1	63.6	51.7	63.4
2023-Dec-05	53	72	60.8	71.8	70.8	59.2	70.7	66.1	55.2	65.7	63.6	52.6	63.3
2023-Dec-06	58	73.4	66.3	72.7	71.3	58.2	71.5	67.3	57.6	66.9	65.7	60.4	64.3
2023-Dec-07	46	72.9	66.5	71.9	70.9	63.7	70.2	67.6	57.3	67.2	64.9	59.6	63.5
2023-Dec-08	70	73	67.1	71.7	71.3	63.4	70.6	68.3	62.5	67.1	64.5	59.8	62.8
2023-Dec-09	49	72	66.7	70.5	69.7	61.1	69.1	67.7	63.1	66	63.8	59.4	61.9
2023-Dec-10	67	73.4	69.3	71.4	69.1	62.1	68.2	68.3	63.6	66.6	66.4	62.9	63.8
2023-Dec-11	56	72.8	66.1	71.9	71.1	62.5	70.6	67.2	61.2	66	64.8	58.8	63.6
2023-Dec-12	58	73.1	67	71.9	71.2	63	70.6	67.7	60.6	66.8	65.1	60.1	63.5
2023-Dec-13	64	72.9	66	72	71	61.6	70.6	66.7	54.6	66.5	65	59.6	63.6
2023-Dec-14	43	73.2	66.6	72.2	70.9	63.6	70.2	68	61.2	67	65.4	59.1	64.3
2023-Dec-15	68	74.6	69.6	73.2	72.1	63.7	71.8	69.6	62.6	68.7	66.9	63.2	64.6
2023-Dec-16	73	72.5	66.9	71.1	69.8	62.9	68.9	67.3	60.2	66.4	64.8	60	63.1
2023-Dec-17	72	73.3	67.8	72	69.3	63.2	68.2	68.3	62.7	67	66.1	60.8	64.7
2023-Dec-18	52	73.6	66.4	72.8	71.6	61.9	71.2	68.4	61.3	67.5	65.6	59.4	64.5
2023-Dec-19	55	73.1	66.5	72.1	71.6	63.1	71	68.2	60.7	67.4	64.6	59.3	63.2
2023-Dec-20	66	73.6	67.4	72.5	71.6	64.5	70.8	68.1	63	66.5	65.7	59.5	64.4
2023-Dec-21	57	73.6	67.5	72.5	71	64	70.1	68.6	60.8	67.8	65.9	60.4	64.5
2023-Dec-22	76	74.3	68.2	73.2	72.1	64.5	71.5	69	64.7	67.1	66.4	60.4	65.3
2023-Dec-23	57	73.3	68.1	71.8	70.2	64.8	68.8	69.1	64.2	67.5	65.5	60.2	64.1
2023-Dec-24	49	71.2	65.7	69.9	68.7	62.2	67.6	65.7	59.5	64.5	63.6	58.7	62.1
2023-Dec-25	40	71.4	66.5	69.7	67.2	59.9	66.4	65.5	54.7	65.2	64.4	60.6	62.1
2023-Dec-26	63	72.1	66.9	70.6	68.8	62.2	67.8	67.4	62.9	65.5	64.6	59.6	62.9
2023-Dec-27	71	73.1	68	71.5	69.7	64	68.5	68.6	63.6	67.1	65.5	60.7	63.7
2023-Dec-28	68	72.8	66.8	71.6	70.8	64.1	69.7	67.7	61.5	66.5	64.8	59.2	63.4
2023-Dec-29	63	73.4	68.1	72	70.2	62.5	69.5	69.7	64.3	68.3	65.5	61	63.7
2023-Dec-30	74	72.4	68.4	70.3	69.6	64	68.3	69.4	65.1	67.5	64	60.7	61.3
2023-Dec-31	41	70.2	66.3	67.9	67.3	60.7	66.3	63.8	56.7	62.9	63.5	60.9	60.1

Monthly Trend - December 2023

Monitor E2: Krivina, 155 School

AIRPORT

Date	Airport Events	LDEN (00:00-23:59), dB			LDay (07:00-18:59), dB			LEvening (19:00-22:59), dB			LNight (23:00-06:59), dB		
		Total LDEN	Aircraft LDEN	Commun. LDEN	Total Leq	Aircraft Leq	Commun. Leq	Total Leq	Aircraft Leq	Commun. Leq	Total Leq	Aircraft Leq	Commun. Leq
2023-Dec-01	11	55.7	45.9	55.2	52.5	38.5	52.4	49.6	35.7	49.5	48.4	40	47.7
2023-Dec-02	27	56	50.8	54.5	52.4	43.9	51.8	53.9	50.8	51.1	47.1	41	46
2023-Dec-03	1	54.9	29.7	54.9	51.9	32.7	51.9	49.3	0	49.3	47.6	0	47.6
2023-Dec-04	18	55	50.7	53.2	50.6	38.5	50.3	49.8	45.9	47.9	48	44.5	45.6
2023-Dec-05	43	56.2	50.6	54.9	53.1	48	51.5	52.5	46.6	51.3	48.2	42.5	47
2023-Dec-06	43	56.5	52.2	54.6	51.6	46	50.3	51.1	47.2	48.9	49.7	45.5	47.6
2023-Dec-07	6	54.8	36.4	54.8	53.1	39.4	53	48.9	0	48.9	46.9	0	46.9
2023-Dec-08	14	58.8	49.3	58.3	52.3	38.3	52.2	59.1	37.7	59.1	48.7	43.8	47.1
2023-Dec-09	17	55.6	49.9	54.4	51.4	40.1	51.1	51.7	43	51.2	48.2	43.9	46.2
2023-Dec-10	18	56.6	51.2	55.2	49.1	39.8	48.7	50.4	42.1	49.8	50.3	45.5	48.6
2023-Dec-11	17	56.4	50	55.4	51.7	41.7	51.3	50.7	46.2	48.8	49.6	43.2	48.5
2023-Dec-12	15	56.2	50.4	54.9	52.7	43.9	52.1	50.1	0	50.1	49.1	44.6	47.2
2023-Dec-13	39	56.8	50.9	55.6	53	47	51.9	51.1	44.9	49.9	49.9	44	48.6
2023-Dec-14	8	58.2	38	58.2	58.3	41	58.4	51.5	0	51.5	48.7	0	48.7
2023-Dec-15	9	55.9	50.9	54.4	53.5	38.1	53.5	48.7	0	48.8	48.6	45.6	45.7
2023-Dec-16	37	55.5	51.5	53.4	52.7	47.6	51.2	49.2	43.3	48	48.2	44.8	45.6
2023-Dec-17	18	55.4	49.7	54.2	51.2	41.2	50.8	48.3	38.9	47.9	48.7	44	47.1
2023-Dec-18	17	56.3	49.3	55.4	51.9	40.2	51.6	52.5	0	52.5	48.9	43.8	47.3
2023-Dec-19	13	54.7	48	53.7	51.2	41.2	50.8	50.9	46.2	49.1	47	40.3	46
2023-Dec-20	12	55	41.1	54.9	51.2	44.1	50.3	47.1	0	47.1	48.3	0	48.3
2023-Dec-21	8	55.6	45.9	55.2	52.2	29.2	52.3	50.4	33	50.3	48.2	40.5	47.5
2023-Dec-22	23	57.5	50.3	56.7	55	43.8	54.8	50.1	35.6	49.9	50.3	44.5	49
2023-Dec-23	9	57.9	40.5	57.8	58.6	39.6	58.5	51.7	41	51.4	47.4	0	47.4
2023-Dec-24	11	59.1	48	58.7	50.5	37.5	50.3	60	43.9	59.9	48.3	41.6	47.3
2023-Dec-25	14	59.3	49.2	58.8	48	37.3	47.6	60.3	39.4	60.2	48.8	43.6	47.3
2023-Dec-26	25	56.5	50.3	55.4	53.1	45.1	52.5	48.9	42.9	47.7	49.5	43.8	48.3
2023-Dec-27	19	56.2	49.8	55.2	52.3	41.4	52	49.7	38.8	49.3	49.4	44.1	47.9
2023-Dec-28	20	56.4	48.6	55.7	53.7	46.3	52.9	49.5	43	48.5	49.2	40.8	48.6
2023-Dec-29	17	58	50.4	57.3	57.4	45.2	57.3	51.8	41.5	51.5	49.2	44.1	47.7
2023-Dec-30	19	57.8	49.1	57.2	57.8	45.4	57.6	49.6	0	49.7	48.8	42.8	47.6
2023-Dec-31	7	75.7	36.6	75.7	50.6	39.3	50.3	51.6	0	51.7	71.4	0	71.4



EVENTS Lmax - October 2023

Monitor W2

AIRPORT

Date	Max Time	Duration (sec)	Max Level	Aircraft Type	Aircraft Category	Operation Type	Runway Name
2023-Oct-01	12:20:42	33	85.4	A321	Commercial Jet	D	27
2023-Oct-01	12:43:23	28	85.2	E195	Commercial Jet	D	27
2023-Oct-01	13:04:46	51	89.6	73H	Commercial Jet	D	27
2023-Oct-01	13:40:03	40	89.3	A321	Commercial Jet	D	27
2023-Oct-01	14:34:07	32	88	A320	Commercial Jet	D	27
2023-Oct-01	17:35:06	52	90.5	MD82	Commercial Jet	D	27
2023-Oct-01	21:20:10	44	90	B744	Commercial Jet	D	27
2023-Oct-02	08:11:30	41	85.1	B738	Commercial Jet	D	27
2023-Oct-02	08:29:05	49	91.7	MD82	Commercial Jet	D	27
2023-Oct-02	11:57:56	63	86.1	B738	Commercial Jet	D	27
2023-Oct-02	12:35:38	26	91.2	B772	Commercial Jet	D	27
2023-Oct-02	15:00:55	35	85.7	A321	Commercial Jet	D	27
2023-Oct-02	16:27:36	27	86.8	B738	Commercial Jet	D	27
2023-Oct-02	18:59:47	57	87.4	A321	Commercial Jet	D	27
2023-Oct-02	19:25:49	32	87	A321	Commercial Jet	D	27
2023-Oct-02	19:49:14	34	85.7	B738	Commercial Jet	D	27
2023-Oct-03	07:22:35	30	87.3	E190	Regional Jet	D	27
2023-Oct-03	08:24:51	39	87.8	A21N	Commercial Jet	D	27
2023-Oct-03	09:30:48	27	86.9	B738	Commercial Jet	D	27
2023-Oct-03	10:23:58	42	85.3	B738	Commercial Jet	D	27
2023-Oct-03	11:17:55	38	85.1	B738	Commercial Jet	D	27
2023-Oct-03	12:13:19	34	85.1	A321	Commercial Jet	D	27
2023-Oct-03	12:23:38	37	86.9	A321	Commercial Jet	D	27
2023-Oct-03	18:32:28	29	85.1	A321	Commercial Jet	D	27
2023-Oct-03	19:53:09	68	87.2	A321	Commercial Jet	D	27
2023-Oct-03	21:59:43	28	86.1	B738	Commercial Jet	D	27
2023-Oct-04	11:50:18	29	90.3	B738	Commercial Jet	D	27
2023-Oct-04	13:52:03	27	86.8	A320	Commercial Jet	D	27
2023-Oct-04	14:01:16	35	85.3	A320	Commercial Jet	D	27
2023-Oct-04	15:28:07	28	86.3	A320	Commercial Jet	D	27
2023-Oct-04	23:09:02	40	86.2	B738	Commercial Jet	D	27
2023-Oct-05	08:17:45	31	88.6	B738	Commercial Jet	D	27
2023-Oct-05	09:52:51	34	89.3	B738	Commercial Jet	D	27
2023-Oct-05	12:06:25	38	86.6	A321	Commercial Jet	D	27
2023-Oct-05	12:09:48	35	85.7	A321	Commercial Jet	D	27
2023-Oct-05	14:34:07	25	85.5	A320	Commercial Jet	D	27
2023-Oct-05	14:53:25	28	85.4	A320	Commercial Jet	D	27
2023-Oct-05	15:54:49	31	89.4	B763	Commercial Jet	D	27
2023-Oct-05	16:02:16	28	86.8	E190	Regional Jet	D	27
2023-Oct-05	17:06:11	34	92.8	B744	Commercial Jet	D	27
2023-Oct-05	18:02:27	23	85.2	B38M	Commercial Jet	D	27
2023-Oct-05	18:07:08	20	86.6	P180	Turboprop	D	27
2023-Oct-05	18:44:17	34	86.2	A320	Commercial Jet	D	27
2023-Oct-05	18:49:48	37	85.6	B738	Commercial Jet	D	27
2023-Oct-05	18:52:47	32	85.8	E75S	Regional Jet	D	27

Месечни доклади за шум

Приложение 4

2023-Oct-06	00:13:14	31	85.3	B738	Commercial Jet	D	27
2023-Oct-06	08:23:25	66	90.4	MD82	Commercial Jet	D	27
2023-Oct-06	11:29:20	35	89.8	B738	Commercial Jet	D	27
2023-Oct-06	18:14:16	28	85.9	E190	Regional Jet	D	27
2023-Oct-06	19:55:37	39	85.3	B738	Commercial Jet	D	27
2023-Oct-06	22:07:31	27	89.7	B772	Commercial Jet	D	27
2023-Oct-06	23:38:18	35	85.2	B738	Commercial Jet	D	27
2023-Oct-07	11:52:06	31	92.3	B744	Commercial Jet	D	27
2023-Oct-07	16:07:11	47	85.2	B738	Commercial Jet	D	27
2023-Oct-07	16:21:21	55	85.7	A320	Commercial Jet	D	27
2023-Oct-07	18:30:16	40	87.8	B763	Commercial Jet	D	27
2023-Oct-08	07:22:57	60	89.5	MD82	Commercial Jet	D	27
2023-Oct-08	11:03:00	25	86.9	P180	Turboprop	D	27
2023-Oct-08	14:23:27	31	87.2	B772	Commercial Jet	D	27
2023-Oct-08	16:04:06	92	89.2	MD82	Commercial Jet	D	27
2023-Oct-08	16:57:29	36	89.9	B772	Commercial Jet	D	27
2023-Oct-09	08:57:25	31	88.6	B772	Commercial Jet	D	27
2023-Oct-09	09:39:09	37	85.5	B738	Commercial Jet	D	27
2023-Oct-09	16:37:29	28	87.6	B738	Commercial Jet	D	27
2023-Oct-09	21:31:50	33	85.2	B738	Commercial Jet	D	27
2023-Oct-10	15:51:31	32	85.5	A320	Commercial Jet	D	27
2023-Oct-10	18:06:08	62	88	B738	Commercial Jet	D	27
2023-Oct-11	11:26:41	22	88.9	FA20	Business Jet	A	9
2023-Oct-11	15:48:17	18	85.1	FA20	Business Jet	A	9
2023-Oct-11	22:39:21	66	88.6	P180	Turboprop	A	9
2023-Oct-12	01:43:01	32	87.9	B763	Commercial Jet	A	9
2023-Oct-12	11:52:15	33	85.1	A321	Commercial Jet	D	27
2023-Oct-12	12:38:21	34	89.3	E195	Commercial Jet	D	27
2023-Oct-12	14:37:11	53	93.3	B772	Commercial Jet	D	27
2023-Oct-12	14:40:11	19	86.1	B38M	Commercial Jet	D	27
2023-Oct-12	18:09:03	34	90.4	B738	Commercial Jet	D	27
2023-Oct-12	20:48:32	30	85.1	B738	Commercial Jet	D	27
2023-Oct-13	10:19:04	30	85.2	A320	Commercial Jet	D	27
2023-Oct-13	15:17:54	34	90.1	B738	Commercial Jet	D	27
2023-Oct-13	18:16:19	26	87.3	E190	Regional Jet	D	27
2023-Oct-13	21:32:39	48	86.4	B738	Commercial Jet	D	27
2023-Oct-13	22:39:32	29	85.4	B738	Commercial Jet	D	27
2023-Oct-14	11:33:20	30	89.7	B738	Commercial Jet	D	27
2023-Oct-14	13:45:39	14	85.2	B733	Commercial Jet	A	9
2023-Oct-14	15:05:37	28	85.4	A320	Commercial Jet	D	27
2023-Oct-15	09:44:38	48	85.8	B38M	Commercial Jet	D	27
2023-Oct-15	12:56:09	29	85.1	E195	Commercial Jet	D	27
2023-Oct-15	14:44:01	37	90.6	B738	Commercial Jet	D	27
2023-Oct-15	17:08:22	34	85.3	B738	Commercial Jet	D	27
2023-Oct-15	18:59:08	31	86	A321	Commercial Jet	D	27
2023-Oct-16	02:54:18	61	87.1	B772	Commercial Jet	D	27
2023-Oct-16	11:19:33	56	86.5	B738	Commercial Jet	D	27
2023-Oct-16	15:07:51	41	88.1	B762	Commercial Jet	D	27
2023-Oct-16	15:10:05	33	86.8	A321	Commercial Jet	D	27
2023-Oct-16	15:31:49	32	85.4	A321	Commercial Jet	D	27
2023-Oct-16	16:33:55	32	88.3	B738	Commercial Jet	D	27

Месечни доклади за шум

Приложение 4

2023-Oct-16	21:17:39	26	85.2	B738	Commercial Jet	D	27
2023-Oct-17	21:09:40	27	85.2	B738	Commercial Jet	A	9
2023-Oct-18	11:47:08	32	85.1	AT73	Turboprop	A	9
2023-Oct-18	21:46:26	41	87.1	B738	Commercial Jet	D	27
2023-Oct-19	10:01:10	40	85.9	E195	Commercial Jet	D	27
2023-Oct-19	10:03:06	37	86.2	A321	Commercial Jet	D	27
2023-Oct-19	10:05:05	27	85.6	B738	Commercial Jet	D	27
2023-Oct-19	10:34:50	28	85.6	E190	Regional Jet	D	27
2023-Oct-19	10:47:20	31	85.5	E190	Regional Jet	D	27
2023-Oct-19	10:56:01	30	92.7	AN26	Turboprop	D	27
2023-Oct-19	14:25:54	22	86.3	B38M	Commercial Jet	D	27
2023-Oct-19	16:28:25	30	86.2	A321	Commercial Jet	D	27
2023-Oct-19	22:08:07	91	87.6	P180	Turboprop	A	9
2023-Oct-20	09:50:36	39	85.9	B738	Commercial Jet	D	27
2023-Oct-20	11:49:23	41	86.5	B738	Commercial Jet	D	27
2023-Oct-20	13:43:42	28	86.7	B738	Commercial Jet	D	27
2023-Oct-20	14:26:42	21	85.3	B38M	Commercial Jet	D	27
2023-Oct-20	14:31:24	36	93.3	B763	Commercial Jet	D	27
2023-Oct-20	15:37:46	28	91.3	B738	Commercial Jet	D	27
2023-Oct-20	16:27:17	33	86.4	E190	Regional Jet	D	27
2023-Oct-20	18:34:52	26	85.4	E190	Regional Jet	D	27
2023-Oct-21	06:40:56	42	87.4	A321	Commercial Jet	D	27
2023-Oct-21	06:50:41	32	85.6	B738	Commercial Jet	D	27
2023-Oct-21	09:20:42	66	90.8	B738	Commercial Jet	D	27
2023-Oct-21	11:25:14	30	90	B738	Commercial Jet	D	27
2023-Oct-21	12:17:50	23	85.2	B38M	Commercial Jet	D	27
2023-Oct-21	12:35:12	31	87.1	E190	Regional Jet	D	27
2023-Oct-21	14:44:15	31	86.4	A320	Commercial Jet	D	27
2023-Oct-21	16:06:32	26	87.9	B738	Commercial Jet	D	27
2023-Oct-21	17:46:49	51	89.3	B738	Commercial Jet	D	27
2023-Oct-21	19:35:12	32	85.4	A321	Commercial Jet	D	27
2023-Oct-21	20:28:09	28	85.5	A321	Commercial Jet	D	27
2023-Oct-21	21:38:56	42	88.8	B738	Commercial Jet	D	27
2023-Oct-22	09:26:13	21	85.8	B38M	Commercial Jet	D	27
2023-Oct-22	10:29:04	38	86.5	B738	Commercial Jet	D	27
2023-Oct-22	13:36:52	24	86.5	E190	Regional Jet	D	27
2023-Oct-22	16:24:23	87	87.6	B738	Commercial Jet	D	27
2023-Oct-22	16:26:47	41	85.5	B38M	Commercial Jet	D	27
2023-Oct-22	19:09:23	31	85.3	A321	Commercial Jet	D	27
2023-Oct-22	21:50:37	43	85.3	B738	Commercial Jet	D	27
2023-Oct-23	09:10:39	35	90	B738	Commercial Jet	D	27
2023-Oct-23	13:22:41	35	85.9	A321	Commercial Jet	D	27
2023-Oct-23	14:52:38	31	88.9	B738	Commercial Jet	D	27
2023-Oct-23	15:07:00	29	86.9	A321	Commercial Jet	D	27
2023-Oct-24	16:20:43	18	85.5	B38M	Commercial Jet	D	27
2023-Oct-24	17:28:54	23	85.7	B38M	Commercial Jet	D	27
2023-Oct-24	18:20:27	38	91.7	B738	Commercial Jet	D	27
2023-Oct-24	18:36:57	35	85.4	A321	Commercial Jet	D	27
2023-Oct-24	23:29:02	52	93.8	B772	Commercial Jet	D	27
2023-Oct-25	01:45:43	36	85.7	B738	Commercial Jet	D	27
2023-Oct-25	11:00:34	34	87.3	B738	Commercial Jet	D	27

2023-Oct-25	11:51:36	33	85.2	C650	Business Jet	D	27
2023-Oct-25	12:22:35	26	88.5	A319	Commercial Jet	D	27
2023-Oct-25	13:02:54	63	85.4	E195	Commercial Jet	D	27
2023-Oct-25	16:50:36	29	87	B772	Commercial Jet	D	27
2023-Oct-26	09:40:38	45	91.2	B738	Commercial Jet	D	27
2023-Oct-26	09:47:52	67	85.6	B738	Commercial Jet	D	27
2023-Oct-26	12:05:04	28	87.3	A320	Commercial Jet	D	27
2023-Oct-26	15:12:14	30	87.7	A321	Commercial Jet	D	27
2023-Oct-26	17:19:22	22	86.5	B38M	Commercial Jet	D	27
2023-Oct-26	18:07:26	30	86.4	B738	Commercial Jet	D	27
2023-Oct-26	23:30:32	40	87.6	B738	Commercial Jet	D	27
2023-Oct-27	11:06:50	27	88.3	E190	Regional Jet	D	27
2023-Oct-27	11:11:15	27	90.9	B738	Commercial Jet	D	27
2023-Oct-27	11:45:27	25	86.7	B38M	Commercial Jet	D	27
2023-Oct-27	13:08:06	27	86.5	E195	Commercial Jet	D	27
2023-Oct-27	13:23:29	28	87.3	A321	Commercial Jet	D	27
2023-Oct-27	14:52:46	24	86.3	E195	Commercial Jet	D	27
2023-Oct-27	15:18:56	34	91.9	B738	Commercial Jet	D	27
2023-Oct-27	15:30:57	29	88	A320	Commercial Jet	D	27
2023-Oct-27	15:57:06	26	87.6	E190	Regional Jet	D	27
2023-Oct-27	16:35:52	33	90.8	B738	Commercial Jet	D	27
2023-Oct-27	16:42:22	38	85.2	A320	Commercial Jet	D	27
2023-Oct-27	20:30:44	35	89.4	B763	Commercial Jet	D	27
2023-Oct-27	20:47:16	60	85.9	B738	Commercial Jet	D	27
2023-Oct-28	09:27:12	26	85.8	B38M	Commercial Jet	D	27
2023-Oct-28	11:56:41	24	85.5	B38M	Commercial Jet	D	27
2023-Oct-29	09:54:07	29	93.4	B744	Commercial Jet	D	27
2023-Oct-29	15:53:43	26	85.1	E195	Commercial Jet	D	27
2023-Oct-29	17:10:38	27	91.6	B738	Commercial Jet	D	27
2023-Oct-30	08:36:58	30	87.6	B738	Commercial Jet	D	27
2023-Oct-30	09:08:13	30	87.8	P180	Turboprop	D	27
2023-Oct-30	09:44:34	41	85.5	B738	Commercial Jet	D	27
2023-Oct-30	09:53:12	28	90.4	B738	Commercial Jet	D	27
2023-Oct-30	10:02:45	32	86.2	B738	Commercial Jet	D	27
2023-Oct-30	12:47:52	32	86.2	B38M	Commercial Jet	D	27
2023-Oct-30	13:31:08	31	88.8	A321	Commercial Jet	D	27
2023-Oct-30	20:09:05	54	85.1	B738	Commercial Jet	D	27
2023-Oct-30	21:34:33	31	87.1	B752	Commercial Jet	D	27
2023-Oct-30	22:11:54	41	86.1	B738	Commercial Jet	D	27
2023-Oct-31	06:33:12	43	85.4	B738	Commercial Jet	D	27
2023-Oct-31	13:37:04	25	87.1	B738	Commercial Jet	D	27
2023-Oct-31	15:27:28	33	85.9	E190	Regional Jet	D	27
2023-Oct-31	16:20:23	38	91.3	B738	Commercial Jet	D	27
2023-Oct-31	16:54:20	22	86.1	7M8	Commercial Jet	D	27



EVENTS Lmax - October 2023

Monitor W3

AIRPORT

Date	Max Time	Duration (sec)	Max Level	Aircraft Type	Aircraft Category	Operation Type	Runway Name
2023-Oct-01	13:05:02	33	85.1	73H	Commercial Jet	D	27

2023-Oct-01	17:35:19	49	86.2	MD82	Commercial Jet	D	27
2023-Oct-02	08:29:19	55	89.1	MD82	Commercial Jet	D	27
2023-Oct-02	12:35:55	33	86.1	B772	Commercial Jet	D	27
2023-Oct-05	15:55:01	34	85.8	B763	Commercial Jet	D	27
2023-Oct-05	17:06:26	54	88.7	B744	Commercial Jet	D	27
2023-Oct-06	11:29:35	42	86.4	B738	Commercial Jet	D	27
2023-Oct-06	22:07:47	36	86.6	B772	Commercial Jet	D	27
2023-Oct-07	11:52:18	38	88.1	B744	Commercial Jet	D	27
2023-Oct-08	07:23:11	56	91.3	MD82	Commercial Jet	D	27
2023-Oct-08	16:04:23	51	85.4	MD82	Commercial Jet	D	27
2023-Oct-09	08:57:37	33	85.3	B772	Commercial Jet	D	27
2023-Oct-11	22:39:05	53	85.8	P180	Turboprop	A	9
2023-Oct-12	12:38:33	31	85.1	E195	Commercial Jet	D	27
2023-Oct-12	14:37:21	30	89.4	B772	Commercial Jet	D	27
2023-Oct-12	18:09:16	31	85.5	B738	Commercial Jet	D	27
2023-Oct-13	15:18:07	49	85.4	B738	Commercial Jet	D	27
2023-Oct-14	11:33:34	35	86.8	B738	Commercial Jet	D	27
2023-Oct-15	14:44:16	39	86	B738	Commercial Jet	D	27
2023-Oct-16	15:08:03	39	86.8	B762	Commercial Jet	D	27
2023-Oct-20	14:31:37	37	89.1	B763	Commercial Jet	D	27
2023-Oct-20	15:37:59	41	85.6	B738	Commercial Jet	D	27
2023-Oct-21	09:20:56	48	86.1	B738	Commercial Jet	D	27
2023-Oct-21	11:25:28	41	86.4	B738	Commercial Jet	D	27
2023-Oct-21	21:39:11	30	85.1	B738	Commercial Jet	D	27
2023-Oct-23	09:10:52	35	86.1	B738	Commercial Jet	D	27
2023-Oct-24	18:20:41	34	86.8	B738	Commercial Jet	D	27
2023-Oct-24	23:29:16	46	89	B772	Commercial Jet	D	27
2023-Oct-26	09:40:53	38	85.9	B738	Commercial Jet	D	27
2023-Oct-27	11:11:31	37	85.3	B738	Commercial Jet	D	27
2023-Oct-27	15:19:08	33	86.1	B738	Commercial Jet	D	27
2023-Oct-27	16:36:06	37	85.4	B738	Commercial Jet	D	27
2023-Oct-29	09:54:21	39	88.2	B744	Commercial Jet	D	27
2023-Oct-29	17:10:50	28	86.9	B738	Commercial Jet	D	27
2023-Oct-30	09:53:25	36	87	B738	Commercial Jet	D	27
2023-Oct-31	16:20:37	57	86.3	B738	Commercial Jet	D	27



EVENTS Lmax - October 2023

Monitor W4

AIRPORT

Date	Max Time	Duration (sec)	Max Level	Aircraft Type	Aircraft Category	Operation Type	Runway Name
2023-Oct-01	21:20:32	47	87.1	B744	Commercial Jet	D	27
2023-Oct-02	12:35:53	26	87.4	B772	Commercial Jet	D	27
2023-Oct-04	08:43:09	19	85.5	AT72	Turboprop	A	9
2023-Oct-05	17:06:32	32	92	B744	Commercial Jet	D	27
2023-Oct-06	14:22:27	34	85.2	MD82	Commercial Jet	D	27
2023-Oct-07	11:52:25	29	88	B744	Commercial Jet	D	27
2023-Oct-08	16:57:43	24	85.4	B772	Commercial Jet	D	27
2023-Oct-11	08:13:13	23	85.6	B752	Commercial Jet	A	9
2023-Oct-11	11:26:17	18	90.1	FA20	Business Jet	A	9
2023-Oct-11	15:47:57	13	89.2	FA20	Business Jet	A	9

2023-Oct-11	21:38:25	36	85.4	B772	Commercial Jet	A	9
2023-Oct-11	22:38:58	36	89.5	P180	Turboprop	A	9
2023-Oct-11	22:44:56	27	85.3	B738	Commercial Jet	A	9
2023-Oct-12	01:42:39	34	89.1	B763	Commercial Jet	A	9
2023-Oct-12	14:37:26	29	87.7	B772	Commercial Jet	D	27
2023-Oct-13	19:42:25	20	100.2	B38M	Commercial Jet	D	27
2023-Oct-14	11:33:36	23	85.4	B738	Commercial Jet	D	27
2023-Oct-14	13:45:16	15	85.9	B733	Commercial Jet	A	9
2023-Oct-16	19:05:37	18	85.1	A321	Commercial Jet	A	9
2023-Oct-17	10:40:49	22	85.6	B738	Commercial Jet	A	9
2023-Oct-17	16:49:49	36	85.7	B738	Commercial Jet	A	9
2023-Oct-18	09:34:28	17	85.2	B738	Commercial Jet	A	9
2023-Oct-18	11:46:42	22	86	AT73	Turboprop	A	9
2023-Oct-19	22:07:44	52	88.6	P180	Turboprop	A	9
2023-Oct-20	14:31:38	25	89.6	B763	Commercial Jet	D	27
2023-Oct-21	21:39:11	38	85.6	B738	Commercial Jet	D	27
2023-Oct-24	23:29:20	30	89.6	B772	Commercial Jet	D	27
2023-Oct-29	09:54:25	32	88.7	B744	Commercial Jet	D	27
2023-Oct-30	09:53:28	25	85.3	B738	Commercial Jet	D	27



EVENTS Lmax - October 2023

Monitor W6

AIRPORT

Date	Max Time	Duration (sec)	Max Level	Aircraft Type	Aircraft Category	Operation Type	Runway Name
2023-Oct-11	10:53:41	114	85.4	A321	Commercial Jet	A	9
2023-Oct-11	17:00:07	120	85.1	E190	Regional Jet	A	9
2023-Oct-18	10:50:42	120	87.3	B38M	Commercial Jet	A	9

Монитори W5 и E2 не са регистрирали авиационни шумови събития с максимално ниво на шума Lmax по-високи от 85 dB(A) през м. октомври 2023 г.



EVENTS Lmax - November 2023

Monitor W2

AIRPORT

Date	Max Time	Duration (sec)	Max Level	Aircraft Type	Aircraft Category	Operation Type	Runway Name
2023-Nov-01	13:13:42	71	85.2	B738	Commercial Jet	D	27
2023-Nov-01	15:30:55	34	88.3	B738	Commercial Jet	D	27
2023-Nov-02	10:43:38	30	90.3	B738	Commercial Jet	D	27
2023-Nov-02	14:51:10	25	87.4	A21N	Commercial Jet	D	27
2023-Nov-02	15:18:30	33	94.5	B763	Commercial Jet	D	27
2023-Nov-02	15:20:41	30	86.2	E190	Regional Jet	D	27
2023-Nov-03	09:51:51	38	85.6	B738	Commercial Jet	A	9
2023-Nov-03	09:55:19	20	85.7	B738	Commercial Jet	A	9
2023-Nov-03	13:23:41	23	85.2	B738	Commercial Jet	A	9
2023-Nov-03	22:28:18	41	86.3	B738	Commercial Jet	D	27
2023-Nov-04	09:00:05	24	87	B734	Commercial Jet	A	9
2023-Nov-04	09:21:15	23	85.5	B738	Commercial Jet	A	9
2023-Nov-04	10:14:52	40	86.8	A320	Commercial Jet	D	27
2023-Nov-04	12:49:20	32	87.6	E195	Commercial Jet	D	27
2023-Nov-04	13:00:05	35	86.5	A320	Commercial Jet	D	27
2023-Nov-04	15:37:38	30	86.8	B738	Commercial Jet	D	27
2023-Nov-05	09:09:35	39	87	B738	Commercial Jet	D	27
2023-Nov-05	10:12:01	37	86.1	B738	Commercial Jet	D	27
2023-Nov-05	11:27:30	40	87.9	B738	Commercial Jet	D	27
2023-Nov-05	13:33:05	34	87.1	B738	Commercial Jet	D	27
2023-Nov-05	13:56:01	35	89.9	B738	Commercial Jet	D	27
2023-Nov-05	14:46:29	19	85.1	B38M	Commercial Jet	D	27
2023-Nov-06	11:45:30	34	88.2	B739	Commercial Jet	D	27
2023-Nov-06	13:28:24	30	89.7	A321	Commercial Jet	D	27
2023-Nov-06	14:25:56	41	85.6	B738	Commercial Jet	D	27
2023-Nov-07	10:15:58	26	86	B738	Commercial Jet	D	27
2023-Nov-07	11:22:41	31	85.4	A320	Commercial Jet	D	27
2023-Nov-07	11:40:05	35	85.3	B738	Commercial Jet	D	27
2023-Nov-07	15:40:25	31	90.7	B738	Commercial Jet	D	27
2023-Nov-07	21:46:03	47	85.4	B752	Commercial Jet	D	27
2023-Nov-08	11:22:36	32	86	A320	Commercial Jet	D	27
2023-Nov-08	12:04:37	38	87.3	B739	Commercial Jet	D	27
2023-Nov-08	14:46:59	39	86.6	A320	Commercial Jet	D	27
2023-Nov-09	12:56:56	41	89.7	B738	Commercial Jet	D	27
2023-Nov-09	13:29:19	32	86.2	A320	Commercial Jet	D	27
2023-Nov-09	14:25:44	21	85.8	B38M	Commercial Jet	D	27
2023-Nov-09	17:05:02	31	91.7	B763	Commercial Jet	D	27
2023-Nov-10	13:46:10	35	87.8	P180	Turboprop	A	9
2023-Nov-11	07:44:10	18	86.7	B734	Commercial Jet	A	9
2023-Nov-11	10:38:19	25	89.3	B738	Commercial Jet	A	9
2023-Nov-11	14:03:10	51	86.2	B738	Commercial Jet	D	27
2023-Nov-12	11:07:14	36	91.8	B738	Commercial Jet	D	27
2023-Nov-12	11:38:34	32	87.2	B738	Commercial Jet	D	27
2023-Nov-12	13:54:48	45	86.6	B738	Commercial Jet	D	27
2023-Nov-12	16:19:57	42	88.8	B738	Commercial Jet	D	27
2023-Nov-12	16:28:24	42	90.2	B738	Commercial Jet	D	27

Месечни доклади за шум

Приложение 5

2023-Nov-12	18:15:24	32	85.7	B738	Commercial Jet	D	27
2023-Nov-12	23:55:12	54	85.3	B738	Commercial Jet	D	27
2023-Nov-13	09:17:17	32	85.3	E190	Regional Jet	D	27
2023-Nov-13	09:40:41	32	89.8	B738	Commercial Jet	D	27
2023-Nov-13	10:33:57	38	88.1	B739	Commercial Jet	D	27
2023-Nov-13	14:34:15	33	85.1	A321	Commercial Jet	D	27
2023-Nov-15	08:37:03	26	87.2	AT72	Turboprop	A	9
2023-Nov-15	11:34:43	78	86.6	B739	Commercial Jet	D	27
2023-Nov-15	15:32:31	33	85.1	A320	Commercial Jet	D	27
2023-Nov-15	17:02:00	53	87.5	B738	Commercial Jet	D	27
2023-Nov-17	10:45:14	55	86.7	B738	Commercial Jet	D	27
2023-Nov-19	09:08:21	48	86.1	B738	Commercial Jet	D	27
2023-Nov-19	16:26:39	50	88.8	B738	Commercial Jet	D	27
2023-Nov-20	10:17:44	30	88.9	B738	Commercial Jet	D	27
2023-Nov-20	14:31:51	31	86.5	B738	Commercial Jet	D	27
2023-Nov-21	12:39:26	42	92.6	B763	Commercial Jet	D	27
2023-Nov-21	15:39:29	34	85.4	B738	Commercial Jet	D	27
2023-Nov-21	16:14:02	31	89.8	B738	Commercial Jet	D	27
2023-Nov-21	20:11:17	33	85.1	A320	Commercial Jet	D	27
2023-Nov-22	10:24:41	36	85.5	B738	Commercial Jet	D	27
2023-Nov-22	11:36:48	37	85.1	E190	Regional Jet	D	27
2023-Nov-22	13:50:02	43	86	B738	Commercial Jet	D	27
2023-Nov-22	21:40:23	44	85.1	B752	Commercial Jet	D	27
2023-Nov-23	11:32:42	37	86.8	B738	Commercial Jet	D	27
2023-Nov-24	06:44:42	53	86.1	B738	Commercial Jet	D	27
2023-Nov-24	11:37:38	40	86	B738	Commercial Jet	D	27
2023-Nov-24	11:43:11	37	86.6	B738	Commercial Jet	D	27
2023-Nov-24	11:54:05	27	89	E190	Regional Jet	D	27
2023-Nov-24	12:01:13	23	86.6	B38M	Commercial Jet	D	27
2023-Nov-24	14:32:09	22	86.4	B38M	Commercial Jet	D	27
2023-Nov-24	14:38:59	41	91.5	B738	Commercial Jet	D	27
2023-Nov-24	14:51:28	33	88.4	E190	Regional Jet	D	27
2023-Nov-24	18:56:17	44	85.3	A321	Commercial Jet	D	27
2023-Nov-25	05:55:46	51	85.9	B738	Commercial Jet	D	27
2023-Nov-25	11:36:08	39	85.2	B738	Commercial Jet	D	27
2023-Nov-25	12:30:32	33	85.2	B738	Commercial Jet	D	27
2023-Nov-25	13:11:45	31	85.6	E195	Commercial Jet	D	27
2023-Nov-25	14:11:48	37	85.2	B738	Commercial Jet	D	27
2023-Nov-25	14:46:53	37	87.9	A321	Commercial Jet	D	27
2023-Nov-25	14:59:47	52	86.4	B738	Commercial Jet	D	27
2023-Nov-27	14:44:01	34	86.8	B738	Commercial Jet	D	27
2023-Nov-28	17:53:58	26	89.1	A319	Commercial Jet	A	9
2023-Nov-28	17:59:52	19	85.2	E190	Regional Jet	A	9
2023-Nov-29	11:32:58	42	86.2	B739	Commercial Jet	D	27
2023-Nov-29	15:33:25	57	88.8	B772	Commercial Jet	D	27
2023-Nov-29	15:37:09	38	87.1	B738	Commercial Jet	D	27
2023-Nov-30	07:16:54	52	86.18	B738	Commercial Jet	D	27
2023-Nov-30	07:20:50	63	85.45	A321	Commercial Jet	D	27
2023-Nov-30	07:32:33	49	85.63	A321	Commercial Jet	D	27
2023-Nov-30	07:35:08	52	85.32	E190	Regional Jet	D	27
2023-Nov-30	13:15:11	31	87.71	B772	Commercial Jet	D	27
2023-Nov-30	13:46:34	38	90.2	B763	Commercial Jet	D	27

2023-Nov-30	14:58:13	30	88.82	E195	Commercial Jet	D	27
2023-Nov-30	15:15:40	33	85.04	E190	Regional Jet	D	27
2023-Nov-30	16:07:33	29	85.46	B738	Commercial Jet	D	27
2023-Nov-30	19:57:53	47	85.11	A320	Commercial Jet	D	27
2023-Nov-30	20:32:29	48	85.73	A321	Commercial Jet	D	27



EVENTS Lmax - November 2023

Monitor W3

AIRPORT

Date	Max Time	Duration (sec)	Max Level	Aircraft Type	Aircraft Category	Operation Type	Runway Name
2023-Nov-02	10:43:50	33	85.1	B738	Commercial Jet	D	27
2023-Nov-02	15:18:42	42	90.4	B763	Commercial Jet	D	27
2023-Nov-05	11:27:41	40	85.4	B738	Commercial Jet	D	27
2023-Nov-06	11:45:43	37	85.3	B739	Commercial Jet	D	27
2023-Nov-07	15:40:38	33	86.2	B738	Commercial Jet	D	27
2023-Nov-09	17:05:14	39	87.8	B763	Commercial Jet	D	27
2023-Nov-12	11:07:26	51	86.1	B738	Commercial Jet	D	27
2023-Nov-12	16:28:38	36	86	B738	Commercial Jet	D	27
2023-Nov-21	12:39:41	39	90	B763	Commercial Jet	D	27
2023-Nov-21	16:14:16	38	86.1	B738	Commercial Jet	D	27
2023-Nov-24	11:54:23	39	85.5	E190	Regional Jet	D	27
2023-Nov-24	14:39:14	48	87.3	B738	Commercial Jet	D	27
2023-Nov-25	12:30:43	46	85.5	B738	Commercial Jet	D	27



EVENTS Lmax - November 2023

Monitor W4

AIRPORT

Date	Max Time	Duration (sec)	Max Level	Aircraft Type	Aircraft Category	Operation Type	Runway Name
2023-Nov-02	15:18:45	28	88.2	B763	Commercial Jet	D	27
2023-Nov-03	19:31:40	18	85.9	AT76	Turboprop	A	9
2023-Nov-04	08:59:44	22	87.3	B734	Commercial Jet	A	9
2023-Nov-09	12:57:15	54	85.3	B738	Commercial Jet	D	27
2023-Nov-10	13:45:47	35	88.5	P180	Turboprop	A	9
2023-Nov-10	13:52:00	44	85.2	E195	Commercial Jet	A	9
2023-Nov-11	07:43:53	19	85.5	B734	Commercial Jet	A	9
2023-Nov-11	08:55:30	18	85.8	B738	Commercial Jet	A	9
2023-Nov-15	08:14:19	21	85.1	B752	Commercial Jet	A	9
2023-Nov-17	21:04:34	23	86.6	B38M	Commercial Jet	A	9
2023-Nov-21	12:39:42	118	89	B763	Commercial Jet	D	27
2023-Nov-24	14:39:16	30	85.5	B738	Commercial Jet	D	27
2023-Nov-28	08:54:44	19	87.6	AT72	Turboprop	A	9
2023-Nov-28	14:33:18	22	85.5	E190	Regional Jet	A	9



EVENTS Lmax - November 2023

Monitor W5

AIRPORT

Date	Max Time	Duration (sec)	Max Level	Aircraft Type	Aircraft Category	Operation Type	Runway Name
2023-Nov-10	17:37:16	35	97.2	BCS3	Commercial Jet	A	9
2023-Nov-17	13:24:53	67	87.5	A321	Commercial Jet	A	9



EVENTS Lmax - November 2023

Monitor E2

AIRPORT

2023-Nov-11	10:07:50	71	90.7	B738	Commercial Jet	D	9
2023-Nov-16	20:55:55	24	92.6	B738	Commercial Jet	A	27

Монитор W6 не е регистрирал авиационни шумови събития с максимално ниво на шума Lmax по-високи от 85 dB(A) през м. ноември 2023 г.



EVENTS Lmax - December 2023

Monitor W2

AIRPORT

Date	Max Time	Duration (sec)	Max Level	Aircraft Type	Aircraft Category	Operation Type	Runway Name
2023-Dec-01	07:05:00	33	87.45	B738	Commercial Jet	D	27
2023-Dec-01	07:12:22	50	87.02	A321	Commercial Jet	D	27
2023-Dec-01	07:47:10	52	90.33	E190	Regional Jet	D	27
2023-Dec-01	10:33:03	52	85.94	B738	Commercial Jet	D	27
2023-Dec-01	10:57:40	55	85.39	B738	Commercial Jet	D	27
2023-Dec-01	12:23:19	36	85.21	E190	Regional Jet	D	27
2023-Dec-01	13:19:40	47	86.78	B738	Commercial Jet	D	27
2023-Dec-01	13:34:07	39	86.65	B738	Commercial Jet	D	27
2023-Dec-01	13:40:56	37	86.16	B738	Commercial Jet	D	27
2023-Dec-01	15:05:32	39	87.11	A321	Commercial Jet	D	27
2023-Dec-01	18:47:32	37	87.45	E75S	Regional Jet	D	27
2023-Dec-02	09:03:34	20	86.97	B734	Commercial Jet	A	9
2023-Dec-04	09:45:07	34	86.47	B738	Commercial Jet	D	27
2023-Dec-04	10:03:16	37	85.49	B738	Commercial Jet	D	27
2023-Dec-04	13:53:32	27	86.66	A320	Commercial Jet	D	27
2023-Dec-04	20:51:13	47	87.45	B738	Commercial Jet	D	27
2023-Dec-04	23:47:56	28	85.62	B738	Commercial Jet	A	9
2023-Dec-05	05:58:25	54	87.62	B734	Commercial Jet	A	9
2023-Dec-05	14:52:41	33	90.55	AN12	Turboprop	A	9
2023-Dec-05	20:42:23	22	86.24	B738	Commercial Jet	A	9
2023-Dec-06	09:16:32	23	85.18	B738	Commercial Jet	A	9
2023-Dec-06	10:08:40	105	86.65	B738	Commercial Jet	A	9
2023-Dec-06	20:38:14	24	86.37	B738	Commercial Jet	A	9
2023-Dec-06	21:17:29	28	85.22	B738	Commercial Jet	A	9
2023-Dec-07	13:19:24	39	90.2	B763	Commercial Jet	D	27
2023-Dec-08	11:02:30	46	87.09	B738	Commercial Jet	D	27
2023-Dec-08	12:40:14	52	85.17	B738	Commercial Jet	D	27
2023-Dec-08	14:58:21	32	89.12	B738	Commercial Jet	D	27
2023-Dec-08	19:38:21	52	85.18	A321	Commercial Jet	D	27
2023-Dec-09	11:54:33	42	89.99	B738	Commercial Jet	D	27
2023-Dec-09	12:05:53	35	90.36	B738	Commercial Jet	D	27
2023-Dec-09	13:11:03	35	86.79	A320	Commercial Jet	D	27
2023-Dec-09	14:15:43	33	88.98	B738	Commercial Jet	D	27
2023-Dec-09	15:02:32	34	88.45	B738	Commercial Jet	D	27
2023-Dec-10	10:01:51	28	86.2	B738	Commercial Jet	D	27
2023-Dec-10	14:37:06	37	86.86	A321	Commercial Jet	D	27
2023-Dec-10	16:27:52	37	90.6	B738	Commercial Jet	D	27
2023-Dec-10	16:29:51	34	89.47	B738	Commercial Jet	D	27
2023-Dec-10	16:47:52	35	87.58	B738	Commercial Jet	D	27
2023-Dec-11	09:48:25	34	87.81	B738	Commercial Jet	D	27
2023-Dec-11	10:03:48	40	86.36	B738	Commercial Jet	D	27
2023-Dec-11	10:31:25	39	85.09	A320	Commercial Jet	D	27
2023-Dec-11	13:39:50	31	88.12	A320	Commercial Jet	D	27
2023-Dec-11	14:40:29	32	85.43	A321	Commercial Jet	D	27
2023-Dec-12	10:53:11	35	86.4	B738	Commercial Jet	D	27
2023-Dec-12	10:58:54	31	85.08	A320	Commercial Jet	D	27

Месечни доклади за шум

Приложение 6

2023-Dec-12	11:44:25	32	87.75	B738	Commercial Jet	D	27
2023-Dec-12	13:55:32	36	85.67	B738	Commercial Jet	D	27
2023-Dec-12	14:55:11	36	85.99	A321	Commercial Jet	D	27
2023-Dec-13	10:29:47	29	88.42	E190	Regional Jet	D	27
2023-Dec-14	10:32:46	63	87.44	E190	Regional Jet	D	27
2023-Dec-14	11:28:00	73	85.45	B738	Commercial Jet	D	27
2023-Dec-14	15:01:06	40	85.58	A320	Commercial Jet	D	27
2023-Dec-14	16:36:57	35	89.95	B763	Commercial Jet	D	27
2023-Dec-14	22:26:06	41	85.45	A321	Commercial Jet	D	27
2023-Dec-15	11:11:59	29	86.48	B738	Commercial Jet	D	27
2023-Dec-15	11:44:21	46	90.12	B738	Commercial Jet	D	27
2023-Dec-15	12:07:12	31	87.36	B738	Commercial Jet	D	27
2023-Dec-15	12:41:13	64	85.99	B738	Commercial Jet	D	27
2023-Dec-15	13:42:37	34	88.71	B738	Commercial Jet	D	27
2023-Dec-15	14:58:59	49	85.63	E195	Commercial Jet	D	27
2023-Dec-15	15:52:20	35	89.67	B738	Commercial Jet	D	27
2023-Dec-16	12:23:16	40	85.01	B738	Commercial Jet	D	27
2023-Dec-17	12:13:28	34	85.7	A321	Commercial Jet	D	27
2023-Dec-17	14:16:15	44	85.57	B738	Commercial Jet	D	27
2023-Dec-17	14:39:06	31	85.35	B738	Commercial Jet	D	27
2023-Dec-18	10:10:53	30	87.65	B738	Commercial Jet	D	27
2023-Dec-18	10:18:15	36	86.03	B738	Commercial Jet	D	27
2023-Dec-18	12:07:44	42	85.77	B739	Commercial Jet	D	27
2023-Dec-18	13:34:49	29	85.28	A21N	Commercial Jet	D	27
2023-Dec-18	14:28:47	32	85.72	A320	Commercial Jet	D	27
2023-Dec-18	14:44:17	38	86.31	B738	Commercial Jet	D	27
2023-Dec-19	16:36:04	37	86.32	B738	Commercial Jet	D	27
2023-Dec-20	16:05:02	39	86.1	B738	Commercial Jet	D	27
2023-Dec-21	13:30:31	35	90.18	B763	Commercial Jet	D	27
2023-Dec-22	11:39:02	49	86.53	B739	Commercial Jet	D	27
2023-Dec-23	09:24:20	32	86.87	E190	Regional Jet	D	27
2023-Dec-23	10:05:36	56	86.56	B738	Commercial Jet	D	27
2023-Dec-24	09:18:42	34	87.61	B738	Commercial Jet	D	27
2023-Dec-24	14:04:06	45	86.32	B738	Commercial Jet	D	27
2023-Dec-25	10:25:28	28	88.29	B738	Commercial Jet	D	27
2023-Dec-26	10:26:49	40	85.4	B738	Commercial Jet	D	27
2023-Dec-26	10:47:44	40	88.67	B738	Commercial Jet	D	27
2023-Dec-26	10:51:01	33	86.8	E190	Regional Jet	D	27
2023-Dec-26	13:00:34	38	88.98	A320	Commercial Jet	D	27
2023-Dec-26	13:50:46	37	87.37	A321	Commercial Jet	D	27
2023-Dec-26	14:49:41	18	85.66	B38M	Commercial Jet	D	27
2023-Dec-26	15:33:33	27	90.3	B738	Commercial Jet	D	27
2023-Dec-27	09:39:49	32	87.67	B738	Commercial Jet	D	27
2023-Dec-27	11:53:48	39	85.99	A321	Commercial Jet	D	27
2023-Dec-27	17:08:52	37	85.11	B738	Commercial Jet	D	27
2023-Dec-28	09:29:54	31	87.8	B733	Commercial Jet	D	27
2023-Dec-28	09:52:33	29	86.23	B738	Commercial Jet	D	27
2023-Dec-28	10:21:04	34	85.86	A320	Commercial Jet	D	27
2023-Dec-28	11:56:50	34	89.72	B738	Commercial Jet	D	27
2023-Dec-29	06:56:04	47	86.51	A321	Commercial Jet	D	27
2023-Dec-29	07:57:35	62	86.57	B738	Commercial Jet	D	27
2023-Dec-29	08:49:34	84	86.53	B738	Commercial Jet	D	27

2023-Dec-29	15:03:31	32	85.9	P180	Turboprop	D	27
2023-Dec-30	12:09:32	34	90.64	B738	Commercial Jet	D	27
2023-Dec-30	13:54:33	33	89.9	B738	Commercial Jet	D	27
2023-Dec-30	15:26:39	50	88.33	B738	Commercial Jet	D	27
2023-Dec-30	20:40:04	41	86.21	B738	Commercial Jet	D	27
2023-Dec-30	20:49:37	30	88.89	B738	Commercial Jet	D	27
2023-Dec-31	10:12:03	64	89.51	73H	Commercial Jet	D	27
2023-Dec-31	14:00:25	36	85.16	B738	Commercial Jet	D	27
2023-Dec-31	18:31:46	44	88.13		Unknown	D	27



EVENTS Lmax - December 2023

Monitor W3

AIRPORT

Date	Max Time	Duration (sec)	Max Level	Aircraft Type	Aircraft Category	Operation Type	Runway Name
2023-Dec-01	13:19:52	58	85.5	B738	Commercial Jet	D	27
2023-Dec-05	14:52:28	30	86.6	AN12	Turboprop	A	9
2023-Dec-08	14:58:35	41	86	B738	Commercial Jet	D	27
2023-Dec-09	11:54:49	49	87.06	B738	Commercial Jet	D	27
2023-Dec-09	12:06:08	54	86.69	B738	Commercial Jet	D	27
2023-Dec-09	15:02:47	44	85.82	B738	Commercial Jet	D	27
2023-Dec-10	16:28:07	44	86.35	B738	Commercial Jet	D	27
2023-Dec-13	10:30:01	31	85.16	E190	Regional Jet	D	27
2023-Dec-15	11:44:34	105	87.61	B738	Commercial Jet	D	27
2023-Dec-15	12:07:24	84	85.16	B738	Commercial Jet	D	27
2023-Dec-15	15:52:34	75	86.14	B738	Commercial Jet	D	27
2023-Dec-28	09:30:06	52	85.15	B733	Commercial Jet	D	27
2023-Dec-28	11:57:03	59	86.32	B738	Commercial Jet	D	27
2023-Dec-29	07:57:47	39	85.05	B738	Commercial Jet	D	27
2023-Dec-30	12:09:46	43	85.79	B738	Commercial Jet	D	27
2023-Dec-30	20:49:50	43	85.21	B738	Commercial Jet	D	27
2023-Dec-31	10:12:17	35	86.08	73H	Commercial Jet	D	27



EVENTS Lmax - December 2023

Monitor W4

AIRPORT

Date	Max Time	Duration (sec)	Max Level	Aircraft Type	Aircraft Category	Operation Type	Runway Name
2023-Dec-02	09:03:16	17	87.67	B734	Commercial Jet	A	9
2023-Dec-02	21:04:34	25	85.57	B738	Commercial Jet	A	9
2023-Dec-02	21:38:24	24	85.69	B738	Commercial Jet	A	9
2023-Dec-04	18:43:14	24	85.05	B738	Commercial Jet	A	9
2023-Dec-04	23:47:34	28	85.7	B738	Commercial Jet	A	9
2023-Dec-05	05:58:06	36	86.66	B734	Commercial Jet	A	9
2023-Dec-05	14:52:21	26	91.47	AN12	Turboprop	A	9
2023-Dec-06	00:02:52	76	106.54	BCS3	Commercial Jet	A	9
2023-Dec-06	08:36:00	24	85.16	B752	Commercial Jet	A	9
2023-Dec-06	09:16:14	25	85.83	B738	Commercial Jet	A	9
2023-Dec-06	10:08:19	30	88.41	B738	Commercial Jet	A	9
2023-Dec-06	22:31:06	29	85.02	B738	Commercial Jet	A	9
2023-Dec-09	11:54:49	29	86.14	B738	Commercial Jet	D	27
2023-Dec-10	16:28:08	30	85.63	B738	Commercial Jet	D	27

Месечни доклади за шум

Приложение 6

2023-Dec-13	21:13:16	29	85.8	B738	Commercial Jet	A	9
2023-Dec-15	11:44:38	35	85.74	B738	Commercial Jet	D	27
2023-Dec-16	15:44:01	23	85.48	B738	Commercial Jet	A	9
2023-Dec-16	17:00:49	17	85.05	B738	Commercial Jet	A	9
2023-Dec-23	19:02:57	33	85.32	A321	Commercial Jet	D	27
2023-Dec-29	10:43:49	19	85.5	B739	Commercial Jet	A	9
2023-Dec-29	15:16:41	32	93.01	B738	Commercial Jet	D	27
2023-Dec-29	20:40:48	25	85.54	A320	Commercial Jet	D	27



EVENTS Lmax - December 2023

Monitor W5

AIRPORT

Date	Max Time	Duration (sec)	Max Level	Aircraft Type	Aircraft Category	Operation Type	Runway Name
2023-Dec-05	14:51:48	24	86.19	AN12	Turboprop	A	9

Монитори W6 и E2 не са регистрирали авиационни шумови събития с максимално ниво на шума Lmax по-високи от 85 dB(A) през м. декември 2023 г.